



1



2

Study Area

PARKS AND OPEN SPACE

SCMSN STATE OF THE TRAILS

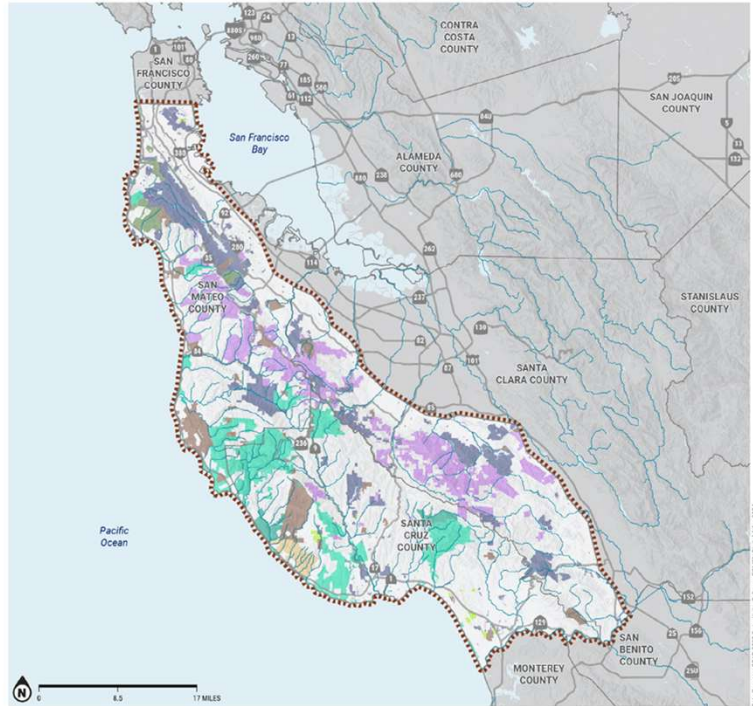
MANAGING ENTITY

- California Department of Fish and Wildlife
- California Department of Parks and Recreation
- City, County
- National Park Service
- Non Governmental Organization
- Other Federal
- Other State
- Special District
- US Bureau of Land Management
- US Fish and Wildlife Service

— Key Riparian Corridors

BOUNDARIES

- SCMSN Boundary
- County Boundary



3



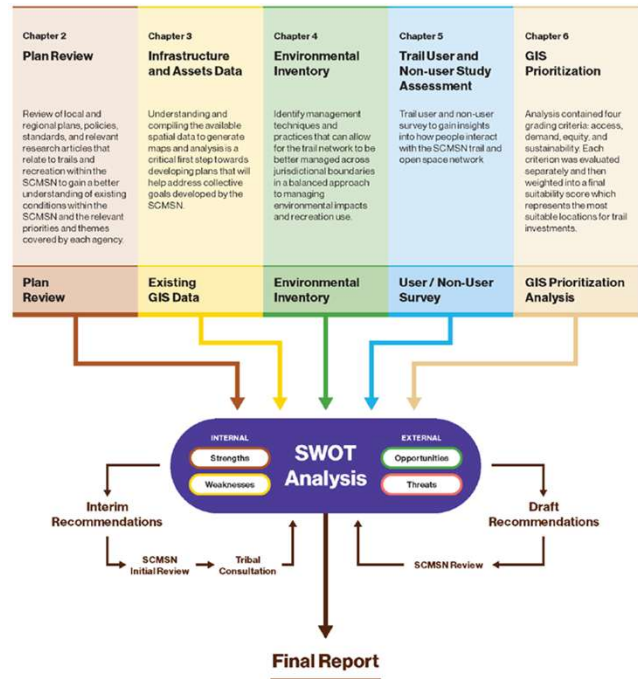
SCMSN
Partners



4

Project Objective

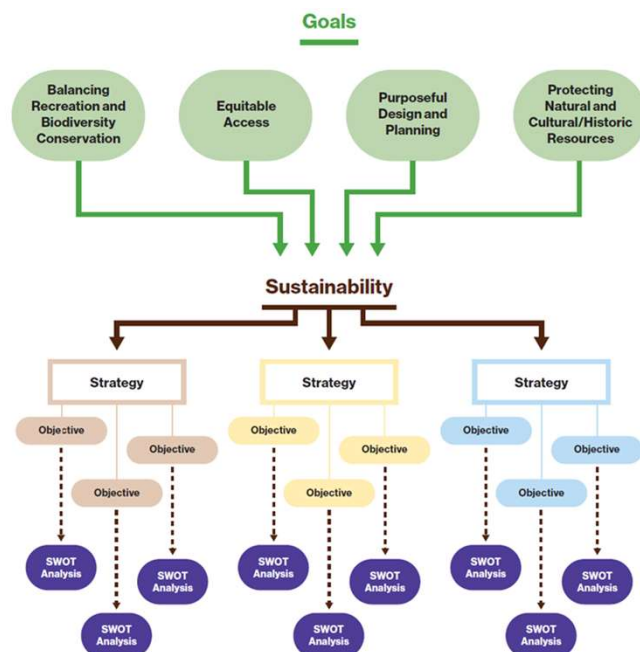
The State of the Trails project is a study to gather the necessary community and trail user information to inform cross-jurisdictional regional trail planning and management decisions that support biodiversity conservation, and a seamless network of interconnected, enjoyable, socially and physically equitable and inclusive trail experiences on the public lands in the Santa Cruz Mountains (Study Area).



5

Study Goals

- Goal 1 - **Enact Purposeful Design and Planning** that strives to meet the public's broad recreational trail needs, including the users' experience.
- Goal 2 - **Foster Equitable Access** to recreational opportunities for all people, particularly for those who have not historically had access, and reduces barriers to entry.
- Goal 3 - **Balance Recreation and Biodiversity Conservation** by providing connections and access opportunities in a way that adequately protects regional biodiversity.
- Goal 4 - **Protect Natural and Cultural/Historic Resources** as a primary focus in designing, building, and maintaining trails.

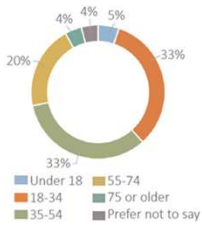


6

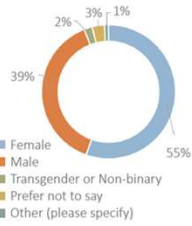
Survey:

Non-Users Demographics

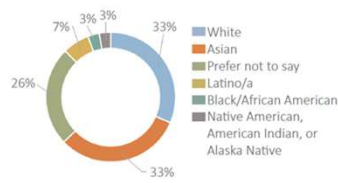
Non-Users by Age



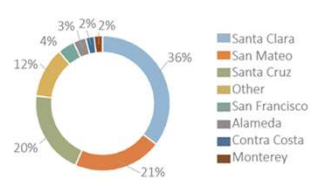
Non-Users Gender Identity



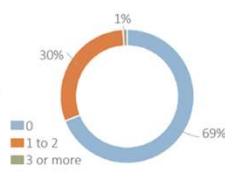
Non-User Race and Ethnicity



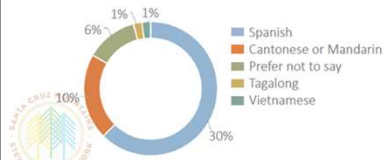
Non-Users Residence



Number of Adults Over Age 65 in Household



Non-English Languages Spoken by Non-Users



Non-Users Vehicle Status

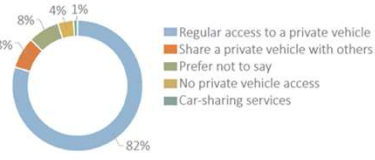


Table 54. What Would Improve Non-User's Ability to Access Trails?

CHOICE	COUNT	PERCENT	CONFIDENCE INTERVAL
Free parking	76	48%	40.4% to 55.8%
Online maps	67	42%	35.0% to 50.2%
Trail signs	60	38%	30.8% to 45.7%
Maps and other information at parks/trailheads	60	38%	30.8% to 45.7%
Public transit or shuttle service	43	27%	20.9% to 34.6%
Road signs	41	26%	19.7% to 33.3%
Improved access without driving	39	25%	18.6% to 32.0%
Less challenging trails	21	13%	8.9% to 19.5%
None of the above	9	6%	3.0% to 10.5%

9

Survey: Trail-Users

SURVEY RESPONSE - USER

SCMSN STATE OF THE TRAILS

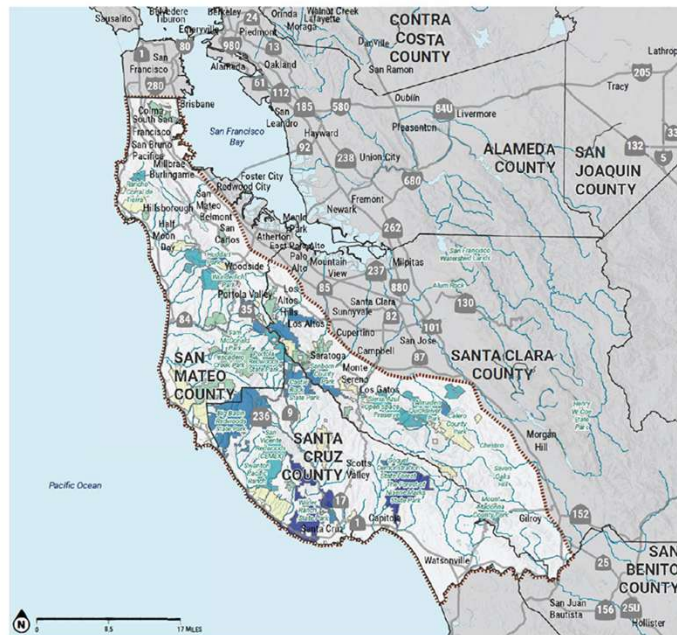
TOTAL PARK VISITS IN THE PAST 12 MONTHS



DESTINATIONS + BOUNDARIES

SCMSN Boundary

County Boundary



10

Survey: Trail-Users

Trail-User Respondents Per Zip Code

SURVEY
RESPONSE -
USER

SCMSN STATE OF
THE TRAILS

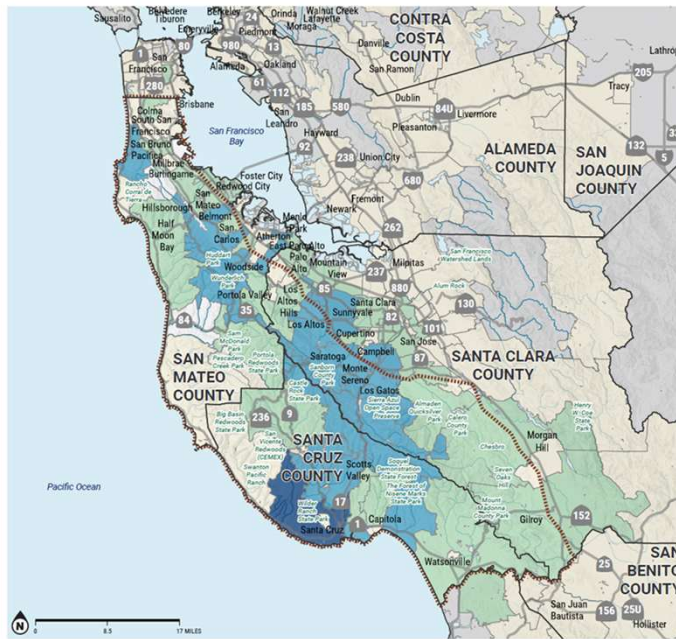
NUMBER OF RESPONDENTS
PER ZIPCODE

0
1 - 11
12 - 34
35 - 75
76 - 150

DESTINATIONS +
BOUNDARIES

SCMSN Boundary
County Boundary

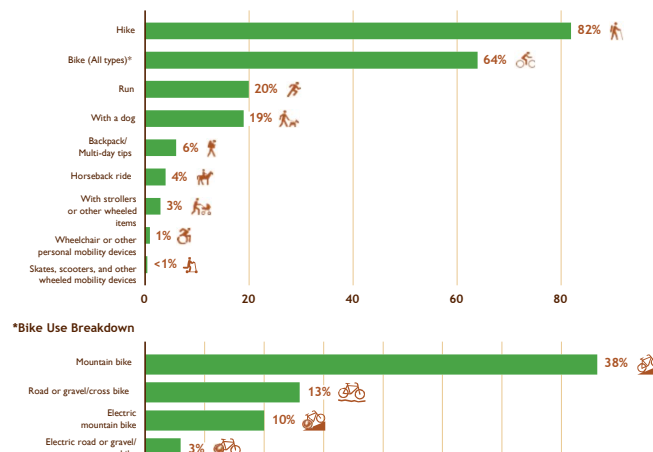
A total of 2,610 individuals reported that they have visited any parks or open space areas in the Santa Cruz Mountains within the last 12 months. Of these respondents, 2,376 are displayed on the map, and 1,521 have reported their home zip codes to be within the SCMSN boundary.



11

Survey: Trail-Users

Trail-Users by Use Type



Parks Visits Past 12 Months

Top 20 Open Space Areas Visited

	Count	Percent
Wilder Ranch (CA State Parks)	763	27%
Henry Cowell (CA State Parks)	536	19%
Nisene Marks (CA State Parks)	407	15%
Soquel Demonstration Forest (Cal Fire)	310	11%
Monte Bello (Midpen)	263	9%
Big Basin Redwoods (CA State Parks)	249	9%
Castle Rock (CA State Parks)	232	8%
Rancho San Antonio (Midpen)	229	8%
Sanborn (Santa Clara County Parks)	220	8%
Windy Hill (Midpen)	210	8%
Huddart Park (San Mateo County Parks)	209	7%
Russian Ridge (Midpen)	208	7%
Calero (Santa Clara County Parks)	200	7%
Purisima Creek Redwoods (Midpen)	183	7%
UCSC	181	6%
Pogonip (City of Santa Cruz)	177	6%
Unknown*	171	6%
Sierra Azul (Midpen)	169	6%
Wunderlich Park (San Mateo County Parks)	169	6%
Almaden Quicksilver (Santa Clara County Parks)	163	6%
El Corte de Madera (Midpen)	161	6%
San Pedro (San Mateo County Parks)	147	5%
Skyline Ridge (Midpen)	142	5%
San Vicente Redwoods (Multiple)	139	5%
St Josephs (Midpen)	134	5%
Santa Teresa (Santa Clara County Parks)	116	4%
Portola Redwoods (California State Parks)	111	4%

12

03.

Opportunity Area Prioritization Analysis

13

Opportunity & Prioritization Analysis

Criteria

Access

- Scores measure the opportunity for SCMSN to invest in trails without sufficient access.

Demand

- Demand scores measure the amount of existing demand there is for outdoor recreational opportunities in the study area.

Equity

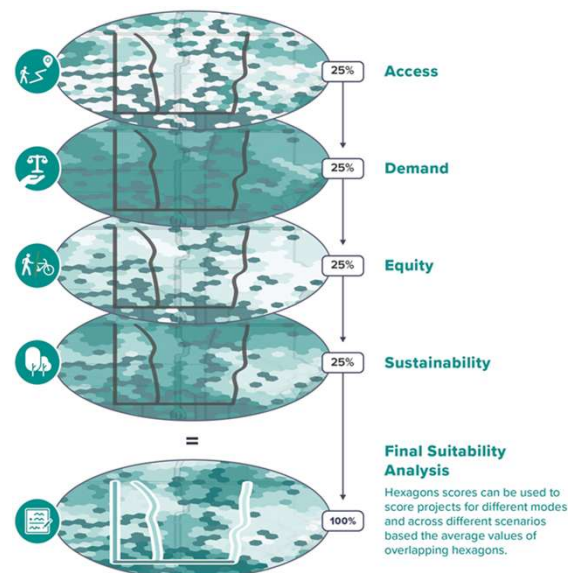
- Equity scores measure the relative index of disadvantage for communities within the study area.

Sustainability

- Sustainability scores measure the relative environmental hazards and vulnerable habitat within the area.

High Opportunity For Trails

- Low existing multimodal access
- High demand for outdoor recreation
- High proportion of disadvantaged people
- Low environmental and habitat risks



14

Opportunity & Prioritization Analysis - Access

SOUTHERN STUDY AREA

SCMSN STATE OF THE TRAILS

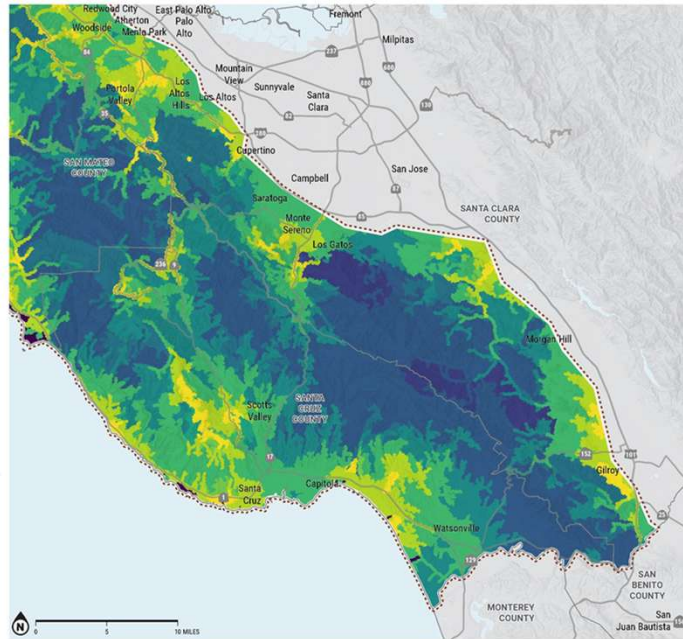
TRAIL ACCESS SCORES

Less Existing Access
More Existing Access

DESTINATIONS + BOUNDARIES

SCMSN Boundary
County Boundary

Access scores visualize the opportunity to increase access to trailheads throughout the region. Areas in blue and purple indicate there is less existing access to trails, a potential opportunity for SCMSN to invest in increased accessibility throughout the region. Areas in yellow indicate more existing multimodal access and therefore less opportunity for SCMSN to make investments in new access points.



15

Opportunity & Prioritization Analysis - Demand

SOUTHERN STUDY AREA

SCMSN STATE OF THE TRAILS

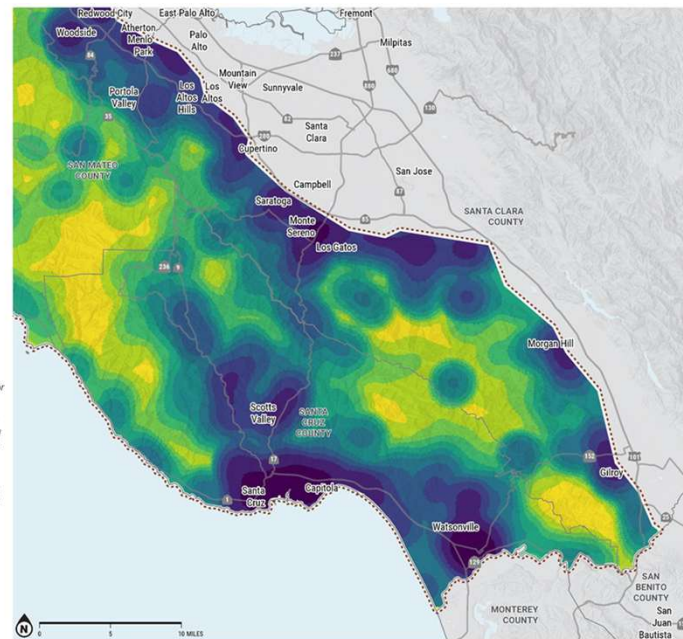
TRAIL DEMAND SCORES

High Demand
Low Demand

DESTINATIONS + BOUNDARIES

SCMSN Boundary
County Boundary

Demand scores indicate where there is currently high demand for outdoor recreation as indicated by trips from the Replica Places spring 2023 dataset. Purple and blue show areas of high demand and areas in yellow show places of low demand as indicated by total trip counts. The analysis assumption is that there is more opportunity for trail investment in areas with high existing demand.



16

Opportunity & Prioritization Analysis - Equity

SOUTHERN STUDY AREA

SCMSN STATE OF THE TRAILS

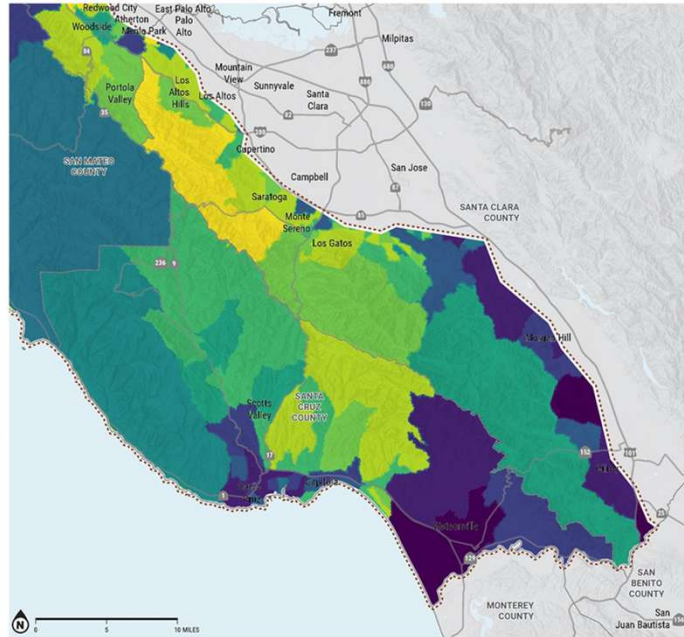
TRAIL EQUITY SCORES

High Equity-Priority
Low Equity-Priority

DESTINATIONS + BOUNDARIES

SCMSN Boundary
County Boundary

Equity Scores utilize the CalEnviroScreen 4.0 scores to show areas of high disadvantage over a series of holistic socioeconomic indicators. Purple areas are disproportionately disadvantaged within the SCMSN study area.



alta

0 5 10 MILES

17

Opportunity Analysis - Sustainability

SOUTHERN STUDY AREA

SCMSN STATE OF THE TRAILS

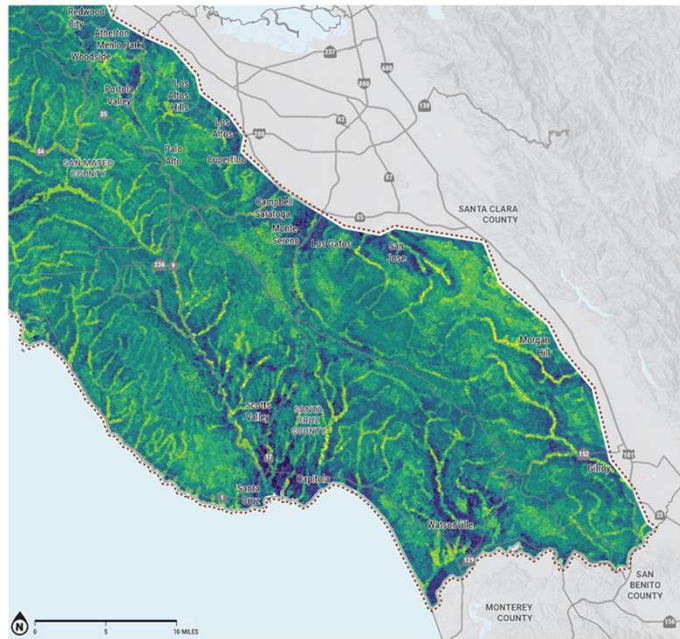
TRAIL SUSTAINABILITY SCORES

Low Sustainability Risk
High Sustainability Risk

DESTINATIONS + BOUNDARIES

SCMSN Boundary
County Boundary

Sustainability Scores illustrate the relative sensitivity of various environmental indicators, including ecosystem classifications, habitat conservation, water resources, wildfire hazards, and climate change. Purple areas are those where the environmental conditions are suitable for trail development, while areas in yellow are highly sensitive to any or all of the sustainability indicators.



alta

0 5 10 MILES

18

Opportunity & Prioritization Analysis

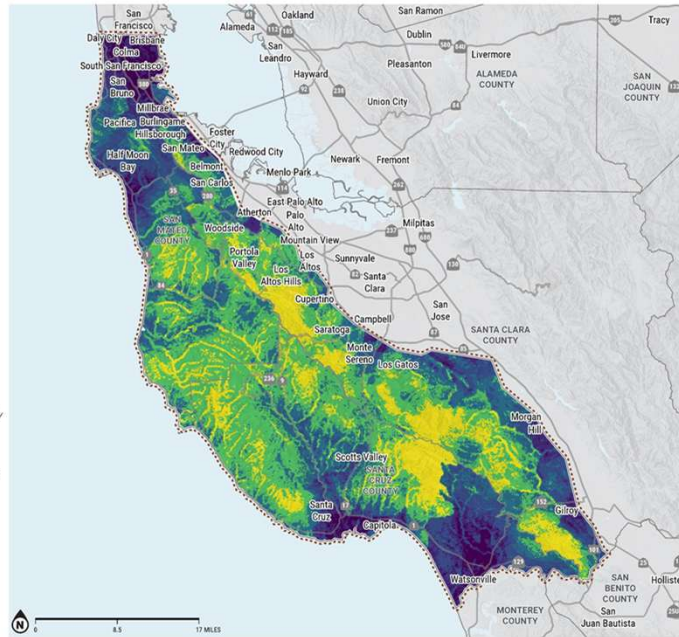
TOTAL OPPORTUNITY SCORES

SCMSN STATE OF THE TRAILS

TOTAL OPPORTUNITY SCORES

DESTINATIONS + BOUNDARIES

Total Opportunity Scores show the relative suitability of trail development or investment across the SCMSN study area. Purple areas are highly suitable relative to other areas in the study area due to their environmental, equity, demand, and access sub scores. Areas in yellow are less suitable based on the criteria assumptions, but may be suitable based on local conditions and typology criteria.



Opportunity & Prioritization Analysis

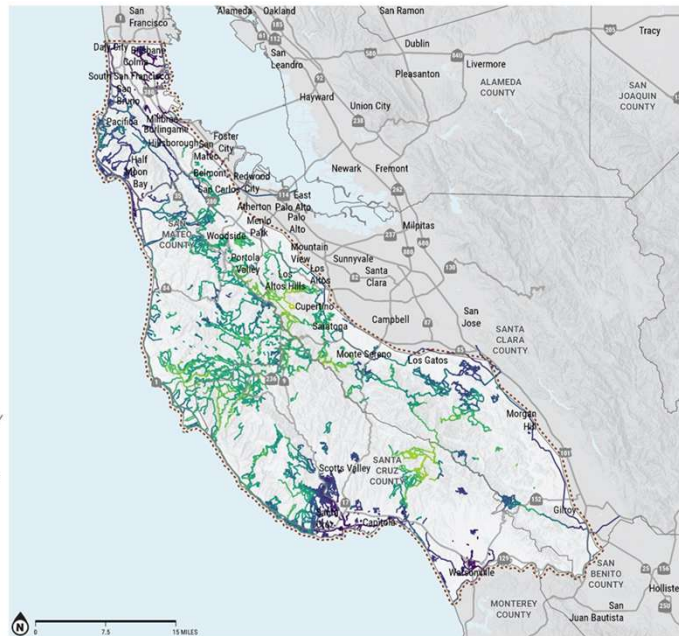
TOTAL OPPORTUNITY SCORES - ROUTES

SCMSN STATE OF THE TRAILS

SCMSN ROUTES

DESTINATIONS + BOUNDARIES

Total Opportunity Scores show the relative suitability of trail development or investment across the SCMSN study area. Purple areas are highly suitable relative to other areas in the study area due to their environmental, equity, demand, and access sub scores. Areas in yellow are less suitable based on the criteria assumptions, but may be suitable based on local conditions and typology criteria.



Opportunity & Prioritization Analysis

Limitations and Future Analysis

- The Opportunity Analysis presents a starting point but scoring is not concrete as weights for each sub score were the same. Future planning efforts might these differently depending on its focus. (e.g. sustainability might be weighted more heavily if there is more emphasis on conservation than new trail development.)
- Using proxy data due to limitations outlined in the report such as lack of data on trailheads and accurate parking locations etc. prevented certain parts of the Opportunity Analysis from being more accurate. Addressing these data gaps might yield different demand or access scoring results.
- Larger parks and open spaces with higher opportunity scores might be good to prioritize for new trail investment due to available land for recreation and conservation. Scoring and data range visualization might alter results and should be considered when choosing priority areas.

OPPORTUNITY & PARK SIZE

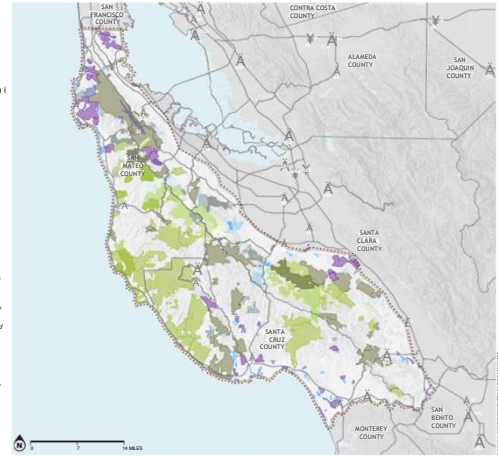
SCMSN STATE OF THE TRAILS



DESTINATIONS + BOUNDARIES



Total Opportunity Scores show the relative suitability of trail development or investment across the parks in the SCMSN study area. Purple areas are highly suitable relative to other areas due to their environmental, equity, demand, and access sub scores and are also of a relatively large size. Areas in green are less suitable based on the criteria assumptions, but are of a large size. Blue parks are highly suitable but not large in size. Identifying parks both suitable and large enough is critical for strategic planning.



Total Opportunity & Park Size

21

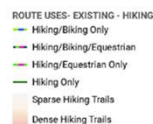
Case Study - Route Gaps and Use Density

Trail and route density visualization makes it easy to identify areas where new trail connections could significantly increase the total mileage of continuous, connected trails for recreation users such as long distance backpackers.

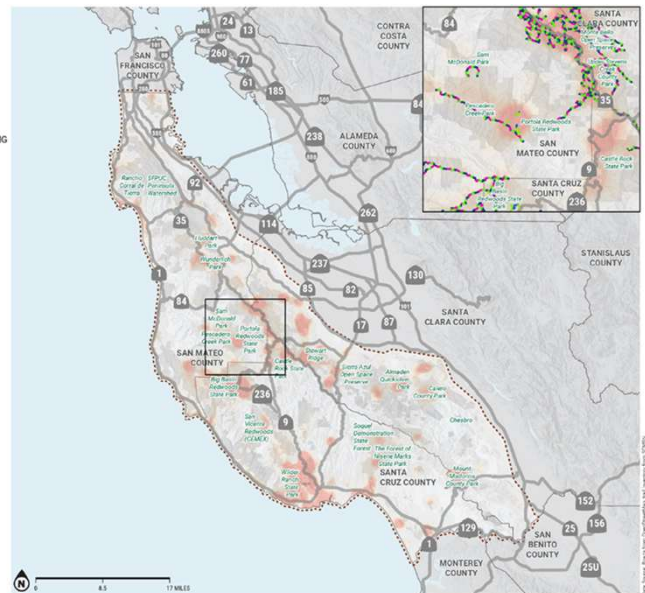
It also shows areas with lower concentrations of trails that may be places to focus on for equity priority communities.

TRAIL DENSITY- HIKING

SCMSN STATE OF THE TRAILS



DESTINATIONS + BOUNDARIES



22

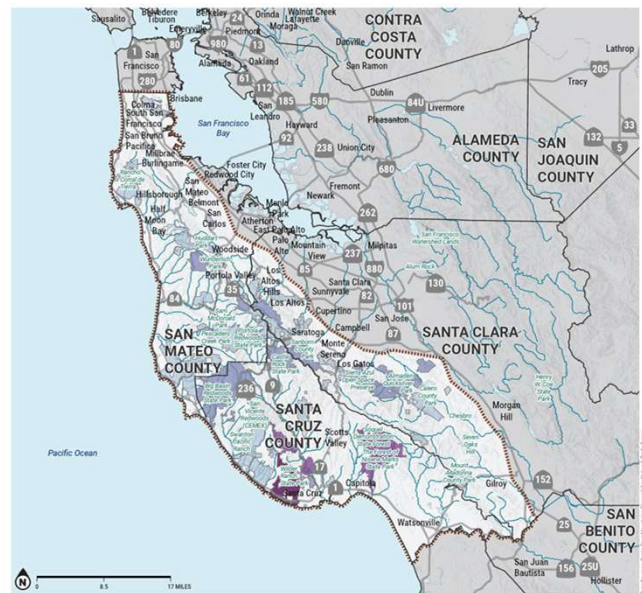
Case Study - Mountain Bike Trail Management

- Popular sport with potential to create conflict with other trail users and damage habitat if not designed and managed correctly.
- Mix of users that abide by trail closures for conservation and those that chose to build unsanctioned trails due to desire for unmet offering.
- Key destinations within study area draw most users.

SURVEY RESPONSE - USER

SCMSN STATE OF THE TRAILS

PARK VISITS IN PAST 12 MONTHS BY MOUNTAIN BIKE TRAIL USERS



23



24