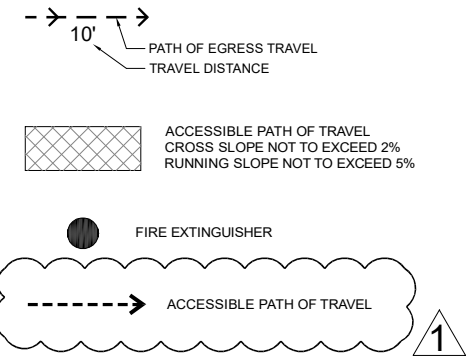


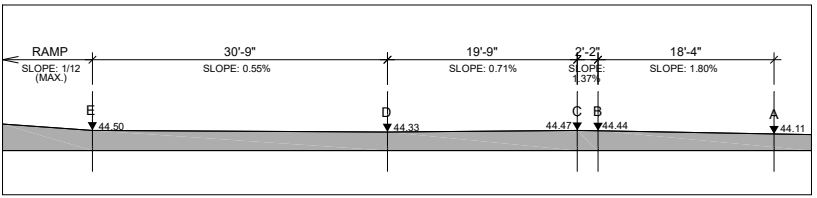
SYMBOL LEGEND



FIRE, LIFE SAFETY & ACCESSIBILITY NOTES

1. ALL UNITS TO BE EQUIPPED WITH SMOKE ALARMS MEETING SECTION R314 OF CALIFORNIA RESIDENTIAL CODE
2. UNITS WITH COMMUNICATION FEATURES FOR PERSONS WHO ARE DEAF OR WITH HEARING IMPAIRMENTS TO MEET 11B-809.5 REQUIREMENTS
 - A. VISIBLE ALARMS
 - B. DOOR SIGNALING DEVICES
3. ALL ENTRY/EXIT DOORS AND GATES TO REMAIN UNLOCKED AND ALLOW FOR FREE PASSAGE IN THE DIRECTION OF EGRESS
4. DECKING TO BE FLUSH WITH UNIT ENTRANCES; THRESHOLDS TO BE PROVIDED COMPLYING WITH 11B-404.2.5.
5. ALL COMMON AREAS WILL MEET 11B ACCESSIBILITY REQUIREMENTS.
6. GATES TO RECEIVED PANIC HARDWARE AS REQUIRED.
7. FIRE EXTINGUISHER TO BE LOCATED ACCESSIBLE BY ALL USERS AT LEAST EVERY 75'.
8. FIRE ALARM SYSTEM WILL BE INSTALLED ON SITE BY A SITE CONTRACTOR TO FIRE DEPARTMENT REQUIREMENTS.

SLOPE OF ACCESSIBLE PATH



ACCESSIBILITY & EGRESS PLAN

SCALE: 1/16" = 1'-0"



MODULAR HOUSING MANUFACTURER

NAME	LIFEARK SPC
PHONE	(626) 344-7526
EMAIL	info@lifeark.net
WEB	www.lifeark.net

PLANT LOCATIONS
MANUFACTURING PLANTS ADDRESSES ARE LISTED ON THE COVER SHEET.



1855 S. Mountain Ave.
Monrovia, California 91016
Tel : 626-344-2999



Revision Schedule

#	Description	Date
1	Added slope of accessible path	06-04-2025

PROFESSIONAL STAMP



CLIENT

COUNTY OF SANTA CRUZ

PROJECT
BRIDGE HOUSING
SITE DESIGN

SHEET TITLE
ACCESSIBILITY &
EGRESS PLAN

PROJECT NUMBER

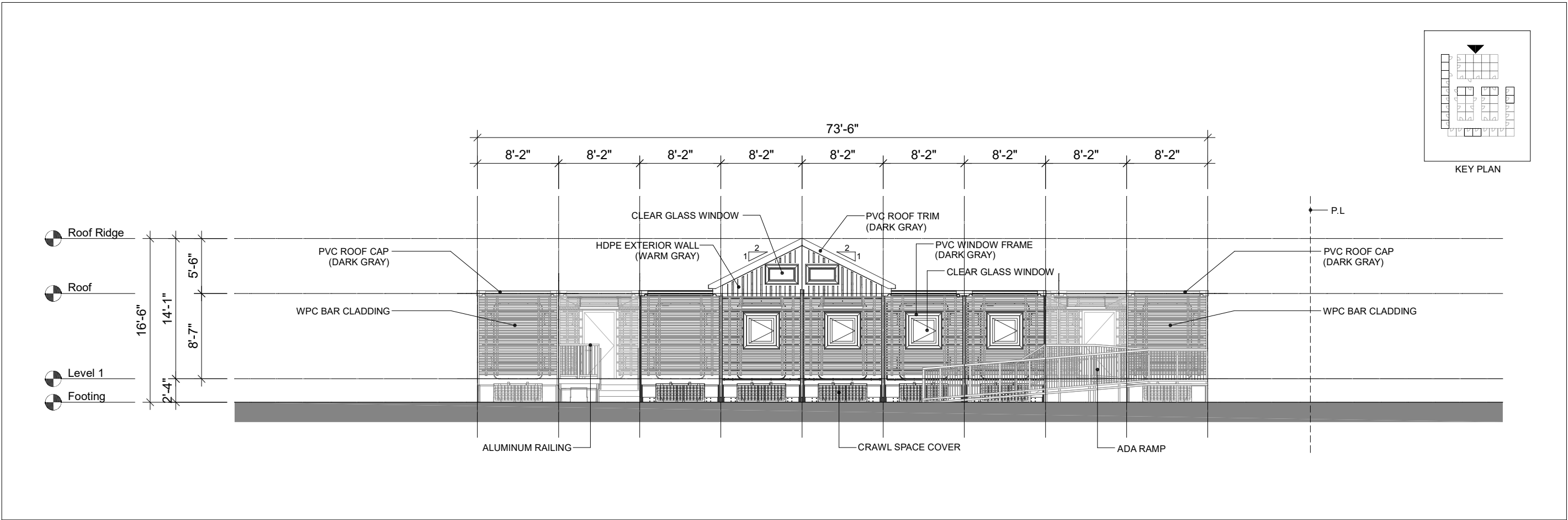
DRAWN BY

CHECKED BY

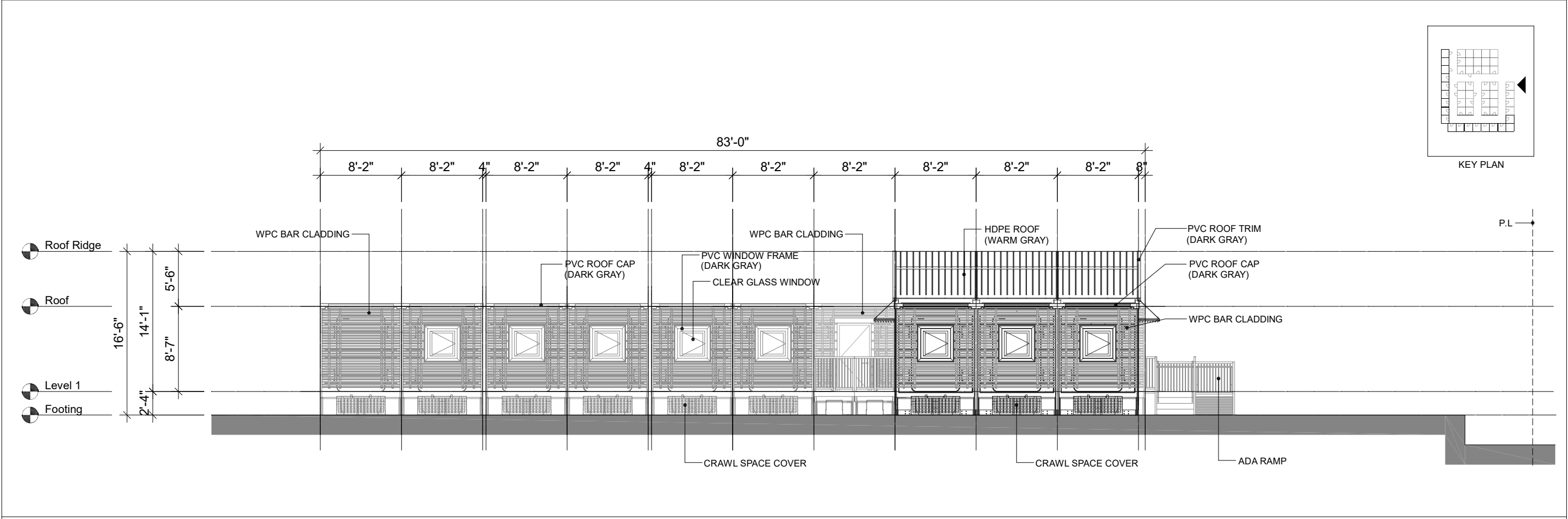
DATE

SHEET NO.

A1.1



OVERALL SITE ELEVATION -NORTH SCALE: 3/32" = 1'-0"



OVERALL SITE ELEVATION -EAST SCALE: 3/32" = 1'-0"

MODULAR HOUSING MANUFACTURER

NAME	LIFEARK SPC
PHONE	(626) 344-7526
EMAIL	info@lifeark.net
WEB	www.lifeark.net
PLANT LOCATIONS	MANUFACTURING PLANTS ADDRESSES ARE LISTED ON THE COVER SHEET.

1855 S. Mountain Ave.
Monrovia, California 91016
Tel : 626-344-2999

DESIGN • CONSULTING • PROJECT MGT
11550 W. BERNARDO COURT, SUITE 100
SAN DIEGO, CA 92128
PHONE (858) 444-3344
WWW.RSTAVARES.COM

751 N. Fair Oaks Ave., Suite 201
Pasadena, CA 91103
Phone: (626) 696-3850

Revision Schedule		
#	Description	Date

PROFESSIONAL STAMP

CLIENT	COUNTY OF SANTA CRUZ
PROJECT	BRIDGE HOUSING SITE DESIGN
SHEET TITLE	OVERALL SITE ELEVATIONS
PROJECT NUMBER	
DRAWN BY	
CHECKED BY	
DATE	
SHEET NO.	A2.0