



JOHN J. PRESLEIGH
DIRECTOR OF PUBLIC WORKS

County of Santa Cruz

DEPARTMENT OF PUBLIC WORKS PARKS, OPEN SPACE, AND CULTURAL SERVICES DIVISION

979 17TH AVENUE, SANTA CRUZ, CA 95062
(831) 454-7901 FAX: (831) 454-7940 TDD: (831) 454-7978

PARKS AND RECREATION COMMISSION AGENDA

Monday, February 24, 2014 7:00 p.m. Regular Meeting	Simpkins Family Swim Center 979 17th Avenue Santa Cruz, CA 95062
---	--

- I. CALL TO ORDER / ROLL CALL
- II. AGENDA MODIFICATIONS OR LATE ADDITIONS
- III. CONSENT AGENDA (Action)
 - A. Approve minutes from December 16, 2013
 - B. Consider Reports:
 1. Maintenance Section – Status Report
 2. Facilities Section – Status Report
 3. Planning Section – Status Report
 4. Recreation Section – Status Report
 5. Approve Appointments to Friends of Santa Cruz County Parks

ORAL COMMUNICATIONS

Opportunity for persons to address the Commission on matters which are within the scope of responsibility of the Commission but not on today's agenda. Presentations must not exceed three (3) minutes in length, and individuals may speak only once during Oral Communications.

IV. DIRECTOR'S REPORT

V. INFORMATION ITEM

1. Presentation of the Monterey Bay Sanctuary Scenic Trail Network Master Plan by Cory Caletti, Senior Transportation Planner, Santa Cruz County Regional Transportation Commission
2. Update Regarding Proposed Parks Ballot Measure on the February 25, 2014, Board of Supervisors Agenda
3. Review the Santa Cruz County Arts Commission Annual Public Art Plan for 2014

VI. REGULAR AGENDA (Action)

1. Consider Conceptual Approval of the Addition of Two Interim Disc Golf Tee Pads/Baskets at the Farm Park located at the Southeast Corner of Soquel Drive and Cunnison Lane in Soquel
2. Consider Staff Recommendation to Defer Consideration of Off-Leash Dog Criteria to August 19, 2014, Parks & Recreation Commission Agenda

VII. WRITTEN CORRESPONDENCE LISTING

The Mission of the Santa Cruz County Parks, Open Space and Cultural Services is to provide safe, well designed and maintained parks and a wide variety of recreational and cultural opportunities for our diverse community



County of Santa Cruz

DEPARTMENT OF PUBLIC WORKS PARKS, OPEN SPACE, AND CULTURAL SERVICES DIVISION

979 17TH AVENUE, SANTA CRUZ, CA 95062

(831) 454-7901 FAX: (831) 454-7940 TDD: (831) 454-7978

JOHN J. PRESLEIGH
DIRECTOR OF PUBLIC WORKS

PARKS & RECREATION COMMISSION Minutes of December 16, 2013, 7:00 p.m. meeting 979 17th Avenue Santa Cruz, California

I. ROLL CALL

Present: Steven Bennett, Katharine Minott, Mariah Roberts, Jim Lang, Dave Mercer

Staff: Betsey Lynberg, Gretchen Iliff, Melissa Henderson

II. AGENDA MODIFICATIONS: None

III. CONSENT AGENDA

- A. Approved Minutes from October 21, 2013, meeting.
- B. Accepted and filed Reports.

Motion/Second: Lang/Roberts

AYES: 5
NOES: 0
ABSTAIN: 0
ABSENT: 0

IV. DIRECTOR'S REPORT –Directors report was given.

V. INFORMATION ITEM

- 1. Report on Live Oak Playful Cities Designation
- 2. Report on Pinto Lake Disc Golf Course Update

VI. REGULAR AGENDA

- 1. Considered nominations from Commissioners to serve on the Board of Directors of Friends of Santa Cruz County Parks. Chair Bennett nominated Don Berge.

Motion/Second: Lang/Minott

AYES: 5
NOES: 0
ABSTAIN: 0
ABSENT: 0

Minutes of December 16, 2013, 7:00 p.m. meeting (cont.)

2. Considered Parks and Recreation Commission 2012-13 Biennial Report and Proposed 2014 Goals. Commissioners approved adding a goal regarding supporting, collaborating and advising staff regarding community outreach opportunities, including marketing and branding, for county parks and recreation programs.

Motion/Second: Lang/Minott

AYES: 5

NOES: 0

ABSTAIN: 0

ABSENT: 0

3. Considered/Approved 2014 Parks and Recreation Commission Meeting Schedule.

Motion/Second: Roberts/Mercer

AYES: 5

NOES: 0

ABSTAIN: 0

ABSENT: 0



County of Santa Cruz

DEPARTMENT OF PUBLIC WORKS PARKS, OPEN SPACE, AND CULTURAL SERVICES DIVISION

979 17TH AVENUE, SANTA CRUZ, CA 95062

(831) 454-7901 FAX: (831) 454-7940 TDD: (831) 454-7978

JOHN J. PRESLEIGH
DIRECTOR OF PUBLIC WORKS

DATE: February 14, 2014
TO: PARKS & RECREATION COMMISSION
ARTS COMMISSION
FROM: GRETCHEN ILIFF, MAINTENANCE DIVISION
RE: STATUS REPORTS ON CURRENT PROJECTS

PARKS, BUILDING, AND GROUNDS MAINTENANCE

NORTH COUNTY PARKS (Highlands, Ben Lomond, Felton Covered Bridge, Probation, Michael Gray Field, Quail Hollow Ranch and the North Coast)

- The handicapped parking stalls received fresh paint in North County Parks this month.
- Several trees were pruned at the Probation center.
- The base ball infields at Highlands Park were graded and leveled for the upcoming little league season.

MID-COUNTY PARKS (AJC, Government Center, Emeline Complex, Twin Lakes, Brommer, Felt, Floral, Coffee Lane, Soquel Lyons, Jose Avenue, Winkle Farm, Willowbrook Lane, Moran Lake, Maplethorpe, Santa Cruz Gardens, Mid-County beach access areas)

- Some split rail fencing was replaced at Anna Jean Cummings Park.
Pickleball lines were added to the tennis courts at Willowbrook Park.
- Clean up of the undeveloped areas of Anna Jean Cummings and the Emeline Governmental Campus were conducted this month.

SOUTH COUNTY PARKS (Polo Grounds, Valencia Hall, Hidden Beach, Seascape, Aptos Village, South County Beach access areas, Scott Park, Scott Estate, Aldridge Lane, Mesa Village, Pinto Lake, Freedom Government Annex)

Gopher control was a high priority for staff last month at Pinto Lake, Polo Grounds and Aptos Park.

- Staff installed several metal decks and a new slide at Aldridge Lane Park.
- Parks staff used day time to clean and wax the floor at Aptos Park and Valencia Hall.

The Mission of the Santa Cruz County Department of Parks, Open Space and Cultural Services is to provide safe, well designed and maintained parks and a wide variety of recreational and cultural opportunities for our diverse community

SIMPKINS FAMILY SWIM CENTER

- Swim Center staff built a garden shed for the community garden at Felt St park this month.
- Staff received training on pesticide safety and the use of owls for rodent control.



County of Santa Cruz

DEPARTMENT OF PUBLIC WORKS PARKS, OPEN SPACE, AND CULTURAL SERVICES DIVISION

979 17TH AVENUE, SANTA CRUZ, CA 95062

(831) 454-7901 FAX: (831) 454-7940 TDD: (831) 454-7978

JOHN J. PRESLEIGH
DIRECTOR OF PUBLIC WORKS

DATE: February 14, 2014
TO: Parks & Recreation Commission, Arts Commission
FROM: Gretchen Iliff, Facilities Management Division
RE: Status Report on Current Projects

Summary for reservations in the Parks for the months of in December 2013 and January 2014, (excluding SFSC):

Attendance at Reserved Facilities:

December and January have been typical for off season events with parties and a few weddings. Staff estimates that approximately 6,000 park visitors attended events in reserved facilities at County Parks in these two months.

Center and Meeting Room Rentals in December 2013 and January 2014:

December and January hosted 9 weddings, receptions and events held at our various Park Centers with rental revenues totaling \$4,250.00. December and January also included 36 meeting room rentals totaling \$1,150.00.

The Facilities office has been very busy with inquiries and bookings for weddings and receptions for 2014 events. The summer schedule is quickly filling up.

Surf Contests:

We are in the midst of another successful surf season. Although there has been a reduction in the amount of contests hosted by surf clothing/ supply companies after the economic downturn, use of Pleasure Point Park, the Hook overlook and Moran Lake Beach by non-profit organizations, school surf leagues and for profit companies continues in these favorite surf and skimboard contest sites. The renovations and improvement along East Cliff Parkway have provided added benefit for events hosted at these park sites. July 2013 through June 2014 have a total of 17 days of contests, with revenues totaling \$4825.00.

Garden Plots:

Garden plot renewals at Jose Avenue and Felt Street Parks have been taking place during the last month. Jose Avenue has 14 garden plots and Felt Street Park has 17 plus 2 ADA garden plots. All plots have either been renewed or new gardeners will be given an opportunity to access these plots due to a number recently released plots during the renewal process. Many of these new gardeners have been on waitlists for years and are excited about starting their gardening experience in County Parks. Waitlists are also being maintained for garden plots at the future parks sites of Chanticleer Park and The Farm.

Recent Fundraiser at Pinto Lake County Park:

The Soquel High School Disc Golf Club, in partnership with the Children's Organ Transplant Association, hosted Chains for Change, a fundraising tournament at Pinto Lake County Park disc golf course to aide the 2013 Soquel High alumni, Gavin Jack, with heart transplant-related expenses. An estimated 100 people showed up, with up to 70 entrants, and \$8,000.00 was raised in this show of community support.



County of Santa Cruz

DEPARTMENT OF PUBLIC WORKS - PARKS, OPEN SPACE & CULTURAL SERVICES

JOHN PRESLEIGH
DIRECTOR OF PUBLIC WORKS

979 17TH AVENUE, SANTA CRUZ, CA 95062
(831) 454-7901 FAX: (831) 454-7940 TDD: (831) 454-7978

DATE: December 9, 2013
TO: Arts Commission, Parks and Recreation Commission
FROM: Kathy DeWild, Program Coordinator
RE: Recreation and Cultural Services Division Status Report – Jan-Mar. 2014

ARTS AND CULTURAL

Public Art Projects

Outside the Box – Work has concluded on Phase 4 of “Outside the Box,” with Phase 5 set to begin end of February.

Chanticleer Park Public Art Project - Madeline Wiener completed and installed two large, limestone sculptures at Chanticleer Park. “A Day at the Park” features a (5’ x 7’ x 4’) couple sitting side-by-side, perhaps looking to their past or their future or watching children play in the park. The more playful, single figure (3’ x 6’ x 3’) leans back on her elbows with one leg crossing over the other, and appears to be looking up while enjoying her day at the park. The dedication of “A Day in the Park” is set for Wednesday, March 12 at 3:00 p.m.

Art Exhibitions – David Fleming’s oil paintings are up at the Simpkins Family Swim Center / Parks through March of 2014.

ADULT AND SENIOR PROGRAMS

February has been a highly anticipated month amongst trip-goers, as on Feb. 23 we will travel to Le Grand Chapiteau in San Jose to watch Cirque Du Soleil perform *AmaLúna*. This trip sold out quickly and there are several eager people on the waitlist hoping that they’ll be afforded the opportunity to join us!

March features a trip to the Walt Disney Family Museum and Fisherman’s Wharf.

Staff is busy in preparation of trips for June 2014 – May 2015. Stay tuned for April’s announcement of many new and exciting excursions!

6

YOUTH PROGRAMS

In the spotlight: Mar Vista ACE - After returning from Winter Break, we began January with the theme of New Beginnings at ACE. Projects included New Year's Resolutions, sunrise art and monkey-shaped pancakes. We played games such as Pictionary, Ultimate Ball, Band-Aid Tag, Barrel O' Monkeys, Island Mix and more. Monster Week featured activities such as Zombie Tag, Hot Lava Monster, Make Your Own Monster, Steal the Cookie, and more. The highlight of the week was a field trip to Pump'D Inflatable Fun Center. We concluded the month with a focus on the Chinese New Year celebration and the ringing in of the Year of the Horse. Projects included fruit roll-up fortune cookies, colored rice creations, traditional edible money bags and an art lesson on drawing a horse. Participants also played games such as Monkeys vs. Horses, All Horses Run, traditional Chinese children's games, emotional animal charades.

In honor of the opening of the Winter Olympics in February, we began by celebrating Sochi. Participants learned about traditional Russian architecture and saw what the Russian alphabet and computer keyboards look like. We made Matryoshka dolls, Russian tea cakes, and decorated eggs. Participants also enjoyed games like Olympic torch relays, Tipped Fox Tag, Nesting Challenge, Fire & Ice, traditional Russian children's games and more. We also took a field trip to the Santa Cruz Roller Palladium. Next was Happy Hearts Week, during which participants made projects such as shrinky-dink rings, heart-shaped bird feeders and candy roses for moms. We also played games such as Don't Break My Heart, Minute to Win It (Valentine's edition) and had team scavenger hunts for puzzle pieces that, once found, were assembled into heart shapes. We were joined by Jen Walker and her canine working dog Moon from the Santa Cruz Animal Shelter, who taught techniques of safely approaching dogs. Moon patiently let all of the children practice by properly greeting him. Next was Fun With Science week, a kid favorite! We made Gak, rockets, conducted several experiments and engineered shelters for an egg drop. We also played games such as Amoeba Tag, Atomic Invasion, Fire at the Laboratory and more. The highlight of the week was a performance by the Banana Slug String Band, who brought their unique style of environmental education to us!

March will offer activities that correlate with themes such Space Week, Mardi Gras, Dr. Seuss and Reptiles & Amphibians. Participants are looking forward to a field trip to Simpkins Family Swim Center, our first Taekwondo workshop and a visit from Lindy the Reptile Lady and her reptilian friends!

AQUATIC PROGRAMS

The Winter Schedule will conclude on Friday, February 28, 2014

The Spring Schedule, listed below, starts March 1, 2014 and runs through June 13, 2014

Lap Swimming

The lap pool is open for lap swimming Monday through Friday, 6:00 a.m. to 7:30 p.m. Saturday it is open from 9:00 a.m. to 4:00 p.m., Sundays from 9:00 a.m. to 12:30 p.m.

Warm-water Pool - The warm-water pool is available for general use on:

Mon/Wed/Fri	6:00 a.m.-11:30 a.m. 3:00-5:00 p.m. (recreation swim) Closed 5:30-6:30 p.m. 6:30-7:30 p.m.
Tues/Thurs	6:00 a.m.-5:00 p.m. Closed 5:00-6:30 p.m. 6:30 p.m.-7:30 p.m. (Shared w/swim lessons 9:30 a.m.-12:30 p.m. and 6:30-7:30 p.m.)
Friday	6:00 a.m.-9:30 a.m. 3:00 p.m.-7:30 p.m.
Saturday	9:00-10:30 a.m. (adults only) 10:30 a.m.-2:30 p.m. (adults and kids ages 6 and under) 12:30-4:00 p.m. (Recreation Swim - all ages)
Sunday	9:00 a.m.-12:30 p.m. (all ages)

Recreation Swim – This includes the Warm Water Pool and the 1st lane of the 50M pool

Monday through Friday	3:00-5:00 p.m.
Saturday	12:30-4:00 p.m.

Spring Swim Lessons –Spring swimming lessons begin on March 3, 2014. Sessions will be available on Tuesday and Thursday mornings from 9:30 am - 12:30 pm AND Wednesday and Friday mornings from 9:30 am – 12:30 pm. Evening swim lesson sessions will be available on Monday, Wednesday & Friday evenings from 5:00–7:30 pm AND Tuesday, Thursday evenings from 5:00 – 7:30 pm.

Spring Break Pool Junior Lifeguard Program – For the second year we will offer a week long Spring Break Pool Junior Lifeguard Program at Simpkins Family Swim Center, Mon – Fri from 9:00 am – 2:00 pm with the option for participants to stay for Recreation swim from 2:00 – 5:00 pm free of charge, March 31 – April 4, 2014. The program follows similar schedules and activities as our very popular Summer Pool Junior Lifeguard Program and has a special activity day on the last day. Program fees are \$164 for residents and \$180 for non-residents.

Adult Fitness Swimming - Adult Fitness Swimming is very popular at the Simpkins Family Swim Center. The most well attended workouts are Tuesday and Saturday mornings. Up to 49 swimmers fill the 50-meter pool at these times. Fitness swimmers may choose from several workout times: Tuesday and Wednesday workouts are at 6:00 a.m., 12:00 p.m. and 6:00 p.m.; Monday, Thursday and Friday workouts are offered at 6:00 a.m. and 12:00 p.m.; Saturday and Sunday workouts are offered at 9:00 a.m.

Water Aerobics & Exercise - The water exercise classes this year continue to reach their highest capacity to date. Water exercise is an excellent way for people to meet their fitness goals without impact on the joints. Classes are designed to appeal to all levels of ability including, healthy, pre-natal, seniors, and rehabilitating or cross training fitness enthusiasts. A monthly calendar is available with dates, times and instructors names. Previous swimming or water-exercise experience is not required for participation in any of the water exercise classes.

Saturday Water Polo - Drop-in Water Polo is held on Sundays from 10:30 a.m. – 12:30 p.m. One must be a member of USAWPA to participate in the program. A Swim fee of \$6.00 will be collected or you may use a swim pass.

Pool Rentals - Santa Cruz County Aquatics and the Cabrillo Threshers swim teams continue to rent lanes in the 50-meter pool. The swim teams offer school-age competitive swimming programs Tuesday through Friday from 4:00 p.m. to 6:00 p.m.

Lifeguard Training Classes - Lifeguard Training Classes will be offered at the Simpkins Family Swim Center January through May, 2014. Most classes will be held on Friday evenings and Saturdays; fees are \$290 for residents and \$319 for non-residents. County Parks will also be offering limited courses in First Aid for Public Safety Personnel (CA Title 22) at the Simpkins Family Swim Center. Interested candidates can find more information on the parks website at www.scparks.com. All course materials are included in the course fees.

Private Pool Parties – Private Pool Parties are available on Saturdays and Sundays starting March 1, 2014, through August 31, 2014. A variety of rental options are available for Private Pool Parties. Private Pool Parties are scheduled on weekends, spring, summer and fall, after the facility has closed to the public.

QUAIL HOLLOW RANCH INTERPRETIVE PROGRAMS

Recent interpretive programs:

- It's a Small World – Microscope Viewing took place on Sunday, January 5 from 2:00 – 4:00 p.m. with park interpreter Lee Summers leading the program
- Two more Broom Bashes took place in January on Saturday, January 11 and 25 from 10:00 a.m. to 1:00 p.m. Linda Brodman from the California Native Plant Society's Habitat Restoration Team co-lead the work party along with park volunteer, Chuck Baughman. A total of 11 people showed up for both programs.
- The Fungus Federation of Santa Cruz offered a Fungus Foray with Cassandra Furntes leading on Saturday, January 18 from 9:00 a.m. to 12:00 noon. Despite the lack of rain – and also mushrooms – the program ran with 12 people attending.
- Historic Crafts for Kids was offered by park interpreter Lee Summers, on Sunday, January 19, from 2:00 to 4:00 p.m., where the children learned about and made crafts from the Ohlone, Mission, and early American traditions.
- A Mad Scientist birthday party took place on Sunday, January 26 from 1:30 – 3:30 p.m. A total of 26 kids and parents attended the program.
- Alex Rinkert led a birding program called Birding through the Habitats on Saturday, February 1 from 8:00 – 10:00 a.m.
- A Child's Victorian Tea Party was offered by Lee Summers on Sunday, February 2 from 1:00 – 3:00 p.m. The participants enjoyed parlor games and tea.

- A Broom Bash took place on February 8 from 10:00 a.m. to 1:00 p.m. Seven people braved a rainy day to pull broom at the Discovery loop maintenance site.
- On Sunday, February 9 from 2:00 – 4:00 p.m. Lee Summers led a historic program called Life of a Pioneer in which five children enjoyed pretending they were pioneers and built a miniature homestead, working together to overcome challenges.

The Nest Box Monitoring season began with a box maintenance work party on Sunday, January 12 from 10:00 a.m. to 12:00 noon. This was followed by a box installation work party on Sunday, January 19, same time. New locations for some nest boxes were discussed beforehand to address continuing but declining harassment by House Wrens.

Scheduling continued for the 2014 interpretive events as well as planning for the Time Traveler and Science Sleuths Summer Day Camps and the Wisdom in Nature adult program.

Preparation began for the Volunteer Recognition Party on Saturday, February 22 from 12:00 noon to 2:00 p.m.

Park Interpreter, Lee Summers, changed her work schedule from Friday – Sunday to Saturday – Monday beginning this month. This will allow for better communication with office staff, volunteers and the public as well as less confusion over holiday schedules.

Annual attendance statistics and volunteer hours were tallied with well over 1800 people attending an interpretive program in 2013 and a total park attendance of almost 7600 visitors. In addition, almost 2800 hours of volunteer time was donated making their total hours since 2001 come to 26,300 hours. Calculating each hour at a rate of \$22 (as per the State of California) volunteers donated over \$61,000 worth of work this year!

Upcoming interpretive programs:

- A Broom Bash is scheduled for February 22 from 10:00 a.m. to 1:00 p.m.
- Mad Scientist Experiments with Lee Summers will be offered on Sunday, February 23 from 1:00 – 3:00 p.m.
- Also on Sunday, February 23, Lee Summers will offer a Mad Scientist birthday party from 4:00 – 6:00 p.m.
- Ponderosa High School will be out for several weeks of community service starting Friday, February 28 from 10:00 a.m. to 1:00 p.m. Students will help paint fences, pull broom and trim back Eucalyptus on March 14 and 28 also.

Quail Hollow Ranch was invited back to the Migration Festival at Natural Bridges State Beach on Saturday, February 8 from 11:00 a.m. to 4:00 p.m. We hosted an information booth on why some bird species migrate while others don't. Four volunteers helped host the booth along with staff, including Tim and Barb Jolly and Kathy and Connor Chesus. A total 69 interested visitors visited the booth. Rain forced the event indoors reflecting a lowered attendance than in previous years.

This year's Volunteer Recognition Luncheon will take place on Saturday, February 22 from 12:00 noon to 2:00 p.m. Lead volunteers will update us on their work:

~ Al Keuter will update us about the expansion of the Sunset trail

~ Linda Brodman will share her 5 minute presentation at a recent weed symposium which featured her work at Quail Hollow
~ Christina Floyd will bring us up to date on the upcoming nest box program which will kick off on March 8.

~ Jim Williams will let us know how plans are going with the creation of a Friends of Quail Hollow Ranch 501(c)3

~ Supervisor McPherson will be on hand to recognize several volunteers for their ongoing support of the park:

Al Keuter – for his work on trails

Linda Brodman and Chuck Baughman – for their work on broom removal

Simon Stapleton – for his work on the gardens

Jenny Anderson – for her work on the nest box program

Kathy Chesus – for her help with advertising and office duties

~ Betsey Lindberg will help distribute quail and hour pins for volunteers who will be receiving them.



JOHN J. PRESLEIGH
DIRECTOR OF PUBLIC WORKS

County of Santa Cruz

DEPARTMENT OF PUBLIC WORKS PARKS, OPEN SPACE, AND CULTURAL SERVICES DIVISION

979 17TH AVENUE, SANTA CRUZ, CA 95062
(831) 454-7901 FAX: (831) 454-7940 TDD: (831) 454-7978

February 14, 2014

SUBJECT: APPOINTMENT OF BOARD MEMBERS TO THE NON-PROFIT
FRIENDS OF SANTA CRUZ COUNTY PARKS

Members of the Parks and Recreation Commission:

As your Commission may recall, Friends of Santa Cruz County Parks (FoSCCP) is a non-profit organization which helps to further park and recreation services by linking community donors and County Parks. For example, throughout 2013 FoSCCP provided scholarships to local area youth for swimming lessons, summer camps, renaissance camp, and pool junior guards.

FoSCCP by-laws state that the board of directors shall consist of at least five (5) but no more than fifteen (15) directors, and that directors shall be appointed by the Parks and Recreation Commission. At the October 21, 2013, Parks and Recreation Commission meeting, Commissioners were asked to seek nominations for the FoSCCP board of directors.

It is recommended that Commissioners present nominations for members of the FoSCCP board of directors and approve appointments of nominees.

Yours truly,

JOHN J. PRESLEIGH
Director of Public Works

By:


Betsy Lynberg
Assistant Public Works Director-Parks Division

BAL:mh

FOSCP nom.doc



monterey bay sanctuary SCENIC TRAIL NETWORK MASTER PLAN

Prepared for the:
SANTA CRUZ COUNTY REGIONAL
TRANSPORTATION COMMISSION

ADOPTED FINAL 11-07-2013

ACKNOWLEDGMENTS

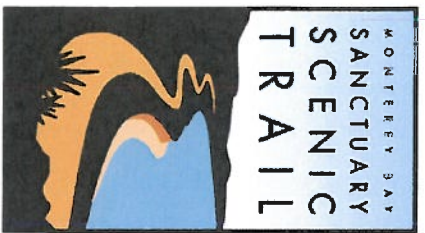
Congressman Sam Farr

California Coastal Conservancy

Santa Cruz County Sanctuary Interagency Task Force

Adopted Nov 7, 2013

Revised Feb 6, 2014



Santa Cruz County Regional Transportation Commission Members

Neal Coonerty, Chair
Eduardo Montesino, Vice-Chair

Zach Friend
Dene Bustichi

Greg Caput
Ron Graves

Tim Gubbins
Randy Johnson

Don Lane
John Leopold

Bruce McPherson
Dennis Norton

Lynn Robinson



Santa Cruz County Regional Transportation Commission Staff

George Dondero, Executive Director
Luis Pavel Mendez, Deputy Director

Cory Caletti, Sr. Transportation Planner/Project Manager
Karana Pushnik, Sr. Transportation Planner

Rachel Moriconi, Sr. Transportation Planner

Consultant Team

RRM Design Group - Trail Planning, Master Plan
Contact: Mike Sherrad

Rincon Consultants, Inc - Environmental Impact Report
Contact: Megan Jones

W-Trans - Traffic
Contact: Steve Weinberger



Cover photo - View from Manresa State Beach looking south



Congressman Sam Farr

I. EXECUTIVE SUMMARY

1.1 OVERVIEW

The Monterey Bay Sanctuary Scenic Trail Network (MBSST Network) is a two-county pedestrian and bicycle pathway project that was initially conceived by the Santa Cruz County Sanctuary Interagency Task Force and championed by Congressman Sam Farr to foster appreciation for the Monterey Bay National Marine Sanctuary and provide a non-motorized coastal path for walkers, joggers, cyclists, people with mobility impairments, families, locals, and visitors.

The Monterey Bay Sanctuary Scenic Trail Network Master Plan (Master Plan) is the result of a directed effort by the Santa Cruz County Regional Transportation Commission (RTC) to develop a braided bicycle/pedestrian MBSST Network along Santa Cruz County's coast. The Santa Cruz Branch Rail Line corridor, which includes the proposed Coastal Rail Trail, will serve the MBSST Network's continuous multi-use trail "spine" to provide alternative transportation and coastal access. The spine, or primary alignment, of the MBSST Network will be built parallel to (not in place of) the operational rail line, within the rail right-of-way, to the extent possible so freight service can continue and future passenger rail service may be provided.

The Coastal Rail Trail promises to be a highly valuable asset to the Santa Cruz County community for transportation, recreation, education, health, eco-tourism, coastal access, economic vitality, and other visitor-serving purposes. Implementation of this key 32-mile-long transportation corridor will allow greater transportation options to 88 parks, 42 schools, and over half of the county's population who live within one mile of the corridor (per 2010 Census tract information). The full MBSST Network will also serve as the California Coastal Trail, although additional facilities may be added.

1.1.1 MASTER PLAN PURPOSE

The purpose of this Master Plan is to establish the continuous alignment and set of design standards for the Coastal Rail Trail and its associated spur trails within the context of existing physical constraints of the railroad, coastal access requirements, highway, and public street rights-of-way. The Master Plan identifies planning issues associated with the Coastal Rail Trail's construction and presents feasible solutions for its design and long-term operation and maintenance.

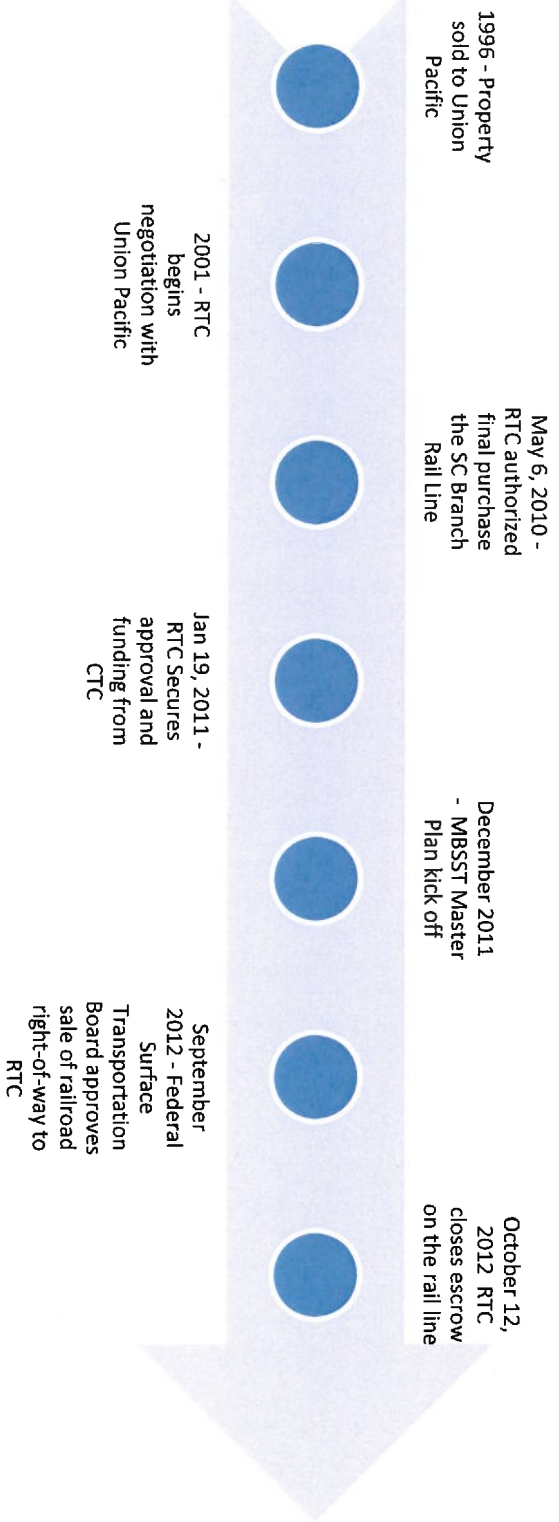
The focus of this Master Plan is on the proposed alignment of the 32-mile-long Coastal Rail Trail as the spine of the broader MBSST Network with additional spur trails and natural surface paths providing connectivity to the coast and to activity centers.

These trails and other existing on-road bicycle and pedestrian facilities form the braided network of trails that is the MBSST Network project. The continuous MBSST Network also proposes gap closures within the project area and access to other desirable destinations, as well as to the coast. These trails, on-street facilities, and natural surface paths will form the approximately 50-mile bike/pedestrian MBSST Network.

15

The Coastal Rail Trail, serving as the system's spine, is a result of a 20-year-long effort to purchase the Santa Cruz Branch Rail Line, which was first established in 1876. In the early 1990s, the RTC began efforts to purchase the Santa Cruz Branch Rail Line right-of-way. Originally owned by Southern Pacific, the property was sold to Union Pacific in 1996. In 2001, the RTC officially began negotiating with then-owner Union Pacific. Over the next decade, negotiations and due diligence work were conducted. On May 6, 2010, the RTC decided to purchase 31 miles of the 32-mile Santa Cruz Branch Rail Line from Union Pacific for \$14.2 million, with \$11 million coming from the California voter-approved Proposition 116. On January 19, 2011, the RTC secured approval and funding from the California Transportation Commission for the purchase of the Santa Cruz Branch Rail Line. On October 12, 2012, the RTC successfully closed escrow, placing title of the branch line into public ownership with the commitment of facilitating passenger and freight service, as well as creating a multi-use bicycle and pedestrian trail.

Iowa Pacific runs the line as the Santa Cruz & Monterey Bay Railway. The Chicago-based railroad company is responsible for maintenance, though not for the work that needs to be done to upgrade the line. Iowa Pacific owns a 20-foot-wide easement along the length of the rail line for rail operations and maintenance.



Through a collaborative planning process, the following goals were developed to guide the development of the Master Plan. They are designed to enhance non-motorized mobility and improve safety, access, traffic congestion, air quality, and the quality of life for Santa Cruz County residents, workers, and visitors. The goals are meant to function as the common framework that integrates the countywide rail trail to new and existing bicycle and pedestrian facilities.

GOAL 1: TRAIL SYSTEM DEVELOPMENT

Define a continuous trail alignment that maximizes opportunities for a multi-use bicycle and pedestrian trail separate from roadway vehicle traffic.

GOAL 2: ENHANCE APPRECIATION OF THE COASTAL ENVIRONMENT

Develop public trail access along the Monterey Bay National Marine Sanctuary to enhance appreciation, understanding, and protection of this special resource.

GOAL 3: EDUCATION AND AWARENESS

Promote awareness of the trail, trail opportunities, and trail user responsibilities.

GOAL 4: IMPLEMENTATION

Develop a long- and short-term program to achieve the policies set forth by this Master Plan through a combination of public and private funding, regulatory methods, and other strategies.

GOAL 5: OPERATION AND MAINTENANCE

Develop the necessary organizational staffing and funding mechanisms to ensure that all trail segments, trailheads, and accessory features are safe, well-maintained, and well-managed.

The planning effort for the Master Plan has been conducted within the framework of an extensive public outreach program designed to involve all those interested and affected by the proposed trail. It does not consider use of private property, does not presume eminent domain actions, and does not prohibit continued agricultural and rail operations.

STAKEHOLDER INTERVIEWS

The majority of the interviews were conducted over a three-day period (October 25, 26, and 27, 2011) at the Santa Cruz County Regional Transportation Commission's office. Following the initial meeting series, two additional stakeholder groups were interviewed—one on November 16, 2011 at RRM Design Group's office and the other on December 1, 2011 via telephone.

A total of 68 people representing 52 stakeholder groups were interviewed. The interviews began with a summary of the project by RTC staff. Following this introduction, the consulting planning team discussed with each stakeholder group their interest in the project, specific technical issues, perceived opportunities and constraints, and, finally, their key desired outcomes. The stakeholder's comments were noted on interview forms by planning team members.

WORKSHOP SERIES #1

This workshop series occurred on three consecutive evenings in north, mid and south county locations from December 13, 2011 to December 15, 2011; approximately 200 members of the public attended. The goal of the workshop series was to bring the community into the MBSST Network development early in the process, with the focus on soliciting ideas for new alignment opportunities, connection points, and design elements.

Workshops began with an overview by RTC staff of the Master Plan's evolution and goals, followed by an update from the consultant on the field work, corridor analysis and initial trail alignment effort completed so far. Following this introduction, the MBSST Network was defined to help illustrate the concept of a "braided" trail system with a well-defined, off-street, paved, multi-use trail following the rail corridor, and serving as the spine for the MBSST Network. With the MBSST Network defined, the consultant team then presented constraints, opportunities, and the emerging trail alignment(s) within the Master Plan area.

WORKSHOP SERIES #2

This workshop series occurred on four consecutive evenings in north, mid and south county locations from November 26, 2012 to November 29, 2012. The workshops were attended by approximately 300 members of the public. The workshop series' goal was to provide an overview of the Draft Master Plan, demonstrate how community input provided at the first workshop influenced the trail alignments, and solicit the community's preferences for trail segment implementation prioritization.

Workshops began with an overview by RTC Staff of the Master Plan's evolution and goals, followed by a summary from the consultant of the field work, corridor analysis, trail alignment development, design standards establishment, and cost analysis efforts completed for the Draft Master Plan. Following this introduction, the organizational structure of the Draft Master Plan was presented along with a synopsis of each section contained within the document. With the Draft Master Plan's contents presented, the consultant team then described the "look and feel" of the MBSST Network's various components through renderings and photographs to help workshop participants visualize the project's build-out.

Following the presentation, workshop participants were provided segment priority preference surveys and asked to list their first and second segment priorities for implementation. To facilitate this exercise, RTC and consultant team members staffed Trail Reach Stations set up around the perimeter of each workshop room. Community members were invited to visit their geographical area (or reach) of interest to ask questions and gather additional information about trail segments before listing their prioritization preferences.

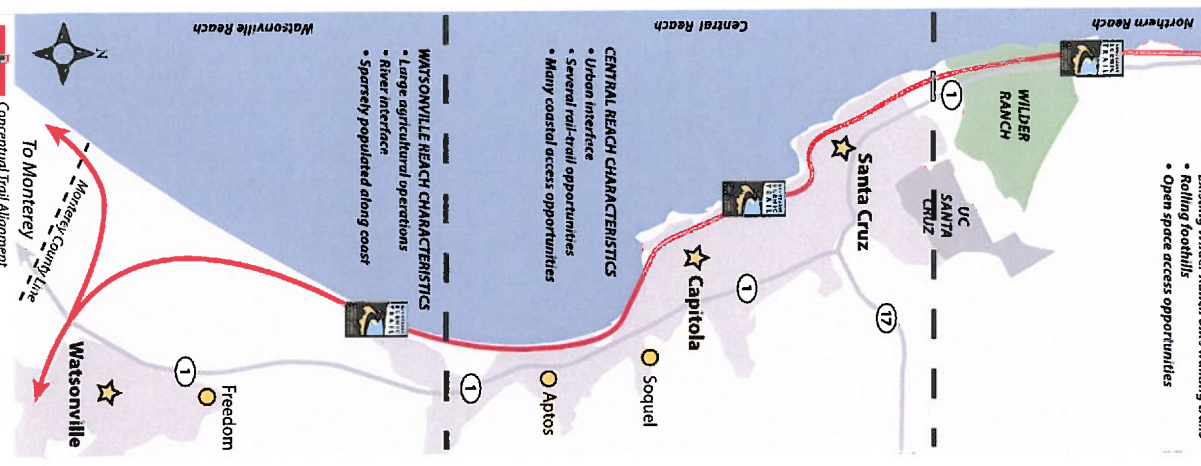
As a result of this interactive process, Table 6.9 in Section 6 was developed to represent community preferences. Table 6.10 includes the cumulative sum of each participating community member's top two preferences. Community input was one of nine prioritization criteria utilized to determine the top segments per trail reach.



To San Mateo County Line

Davenport

- NORTHERN REACH CHARACTERISTICS
- Agriculture interface on coastal bluffs
- Existing Wilder Ranch bikers walking trails
- Rolling foothills
- Open space access opportunities



The Master Plan organizes the proposed trail alignment into two categories: reaches and segments.

A reach is defined as a geographic area identified by regional similarities, such as the urbanized areas of Santa Cruz, Capitola, and Aptos. The Master Plan area is divided into the Northern, Central, and Watsonville Reaches, which are further explained in Sections 3.3 through 3.5.

Segments are defined as potential trail projects with logical beginning and end points. The Master Plan trail alignment is divided into 20 segments with the intent that each segment will be funded, designed, and constructed in part or as a whole.

NORTHERN REACH DESCRIPTION

The defined Northern Reach of the MBST Network begins where Highway 1 crosses the San Mateo/Santa Cruz County line, just north of the Waddell Bluffs, and continues south to the northern Santa Cruz city limit near Schaffer Road. The Northern Reach consists primarily of narrow, steep coastal bluffs from Waddell Creek to Yellow Bank Beach at Coast Dairies, and transitions to rural agricultural land and natural coastal meadows south to Schaffer Road. There are numerous small coves and beach strands with mostly informal footpaths down to the beach shore. Large sections of the coastal edge are owned by California State Parks, with several scenic rest stops along Highway 1 that include passive recreation access to beaches, coastal bluffs, and inland parkland trails. Much of the land between Highway 1 and the coastal bluffs is managed under agricultural leases with intermittent public coastal access adjacent to the agricultural land. These intermittent access points vary from paved parking lots with restrooms, potable water, and scenic overlooks to unpaved informal roadway pullouts with difficult access to steep coastal bluff tops and beaches.

An existing multi-use paved path runs parallel between the railroad corridor and Highway 1, heading north just over one mile from Schaffer Road to Wilder Ranch trailhead parking off Highway 1. Many of the other public access points along the Northern Reach have limited signage and provide limited trail access along the coast. The railroad corridor parallels the coastal side of Highway 1 from Schaffer Road to Davenport, where the tracks cross Highway 1 to the inland side before ending one mile north of Davenport. Except for the crossing in Davenport, the railroad's offset from Highway 1 varies from 100 feet to 1/4 mile from Schaffer Road to Scaroni Road, then parallels Highway 1 at a distance of 50 to 100 feet as the coastal bluffs steepen and narrow toward Davenport. The rail tracks cross several small drainages with both wood trestles and box culverts in the Northern Reach. Much of the land south of Coast Dairies is flat, with intermittent rolling hills giving way to steep coastal cliffs further north. Sensitive biological areas exist along perennial creeks and drainages, and near coastal bluffs and sand dunes. The Northern Reach is comprised of Segments 1-5.

CENTRAL REACH DESCRIPTION

Beginning at Santa Cruz's northern city limit near Schaffer Road and extending southeast to Seascaple Park just south of Aptos, this reach of the rail corridor traverses through densely populated coastal urban areas. The combination of intense urban development and the steep coastal edge in the Central Reach creates many physical challenges. However, the central reach has the highest potential to improve bicycle and pedestrian access to key destinations and reduce the number of vehicle miles traveled and associated greenhouse gas emissions.

Within the Santa Cruz city limits, the rail corridor parallels many existing segments of the core route of the Monterey Bay Sanctuary Scenic Trail (MBSSST) alignment. Much of the original alignment in the Central Reach is made up of on-road facilities, sidewalks, bike lanes or coastal edge pedestrian boardwalks with beach access and interpretive signs. Some sections are strictly in the street as Class III bike routes with no sidewalks. The rail corridor parallels the entire length of the existing MBSSST alignment and could serve as an alternate off-street, multi-use route connecting communities north and south to the regional network.

Other challenges along the Central Reach are the many existing large rail bridge and trestle structure crossings. These structures are old, narrow in width, and span steep drainages and roadways. In one scenario the structure spans across a historic district in Capitola. The southern portion of the Central Reach parallels the coast meandering atop the steep coastal bluffs and multiple residential and resort areas. Equestrian use may be provided in Segment 6 of the reach. The Central Reach connects over six state beaches, numerous coastal access points, parks, schools, and provides future connection opportunities for countless communities along the corridor. The Central Reach is comprised of Segments 6-14.

WATSONVILLE REACH DESCRIPTION

The Watsonville Reach of the Monterey Bay Sanctuary Scenic Trail begins at railroad mile marker 10 near Seascaple Park, and ends over the Santa Cruz and Monterey County border at the Pajaro River and at Railroad Avenue in Monterey County. This reach only parallels the coastal edge for about one mile before it begins following the San Andreas Road alignment inland as it heads south and east. The landscape is primarily open space, with some residential areas near Manresa and tapers off to rural farm and agricultural lands further to the south. The rail alignment eventually drifts away from San Andreas Road just south of railroad mile marker 7 and follows the inland side of a steep sloping mesa.

The Watsonville Reach stretch of the corridor travels through native woodlands, flanked on the west by agricultural land on top of the mesa and to the east, rural land sloping away to the Gallighan Slough below. The Harkins Slough is an impressive wetland crossing with wide open fields flooded throughout the year. The rail crossing at the Harkins Slough is on a stretch of raised earthen dike. The rail line then crosses Watsonville Slough and passes through the center of the agricultural fields, just west of the city of Watsonville, eventually connecting to city park land and the downtown street network at Walker Street. The rail line crosses the Pajaro River to the south and ends at Railroad Avenue in the town of Pajaro. The Watsonville Reach is comprised of Segments 15-20.



Through Congressman Sam Farr's leadership and effort, the project was solidified as a two-county system in order to establish a trail around the full arc of the Monterey Bay. Congressman Farr secured \$9 million through federal appropriations and earmarks towards the project to be split equally between the two counties. Through the RTC's discretionary funding sources, an additional \$2.2 million was designated for the project. Finally, the California Coastal Conservancy granted the RTC \$250,000 toward the preparation of the Master Plan so the trail will span the length of the Santa Cruz County coast from the San Mateo County line to the Monterey County line. Federal transportation dollars mandate the Trail Network serve the mobility needs of bicyclists and pedestrians. Additional funding will need to be identified to bring the project into full implementation. Figure A includes a cost breakdown summary associated with completing the MBSST Network.

NORTHERN REACH PROJECTS AND COSTS

The Northern Reach includes Segments 1-5. Table A prioritizes the segments by the number of points they received through nine project prioritization criteria (proximity to activity center, coastal access connectivity, trail segment cost, trail segment length, minimal or no bridge crossings, limited right-of-way constraints, gap closures, public input, and population density). The segments that received the most number of points are considered the most feasible for implementing within a short time frame. This includes Segments 5, 1, and 2 (in that order) as the top three segments within this reach.

These segments provide gap closures to existing MBSST Network segments, provide access to numerous activity centers, connect to the coastal edge and beaches, and provide connectivity to other existing local and regional bikeway and pedestrian facilities. Segments 3 and 4 may require a bit more lead time to resolve physical design constraints, right-of-way conflicts, complex coastal connections, and other budgetary challenges. However, these segments serve to close the gap in the overall MBSST Network, which will help elevate their importance for funding. Segment 5 is particularly in a good position for implementation as it falls within the railroad right-of-way corridor with minimal private land interference or significant environmental impacts. Also, equestrian use is appropriate for the Northern Reach, particularly in Segments 5 and 6.



TABLE A - Northern Reach Projects

Points	Segment	Length	Proposed Improvements	Cost Estimate	Document Reference Page
33	5.1 - Davenport and Wilder Ranch	2.75 miles	<p>Subsegment 5.1 proposed improvements include:</p> <ul style="list-style-type: none"> 1.49 miles (7,890 LF) multi-use paved path (Class I) along the coastal-side rail right-of-way 1.26 miles (6,680 LF) native soil coastal bluff trails and coastal access between Davenport Beach and Yellow Bank Beach (this distance is comprised of Segments 5A, 5B, and 5C) One (1) rail crossing at spur trail connecting Davenport parking lot to rail trail, parking lot improvements to existing dirt lot, coastal side of Highway 1 in Davenport near the Davenport Overlook One (1) new signalized at-grade road crossing of Highway 1 in Davenport One (1) rail crossing at the Highway 1 crossing One (1) private road crossing Fencing may be considered when project is implemented 	\$3,365,904	4-25 to 4-34
	5.2 - Davenport and Wilder Ranch	4.18 miles	<p>Subsegment 5.2 proposed improvements include:</p> <ul style="list-style-type: none"> 2.58 miles (13,630 LF) multi-use paved path (Class I) along the coastal side rail right-of-way 1.60 miles (8,430 LF) native soil coastal bluff trails (this distance is comprised of Segments 5D and 5E) One (1) rail crossing at upper Scaroni Rd. One (1) road crossing of upper Scaroni Rd. and two (2) additional private crossings Fencing may be considered when project is implemented 	\$4,997,232	4-25 to 4-34
	5.3 - Davenport and Wilder Ranch	3.62 miles	<p>Subsegment 5.3 proposed improvements include:</p> <ul style="list-style-type: none"> 3.51 miles (18,520 LF) multi-use path (Class I) along the coastal side rail right-of-way 0.11 miles (570 LF) native soil coastal bluff trails (Segment 5F) One (1) rail crossing at lower Scaroni Rd. One (1) road crossing of lower Scaroni Rd. and eleven (11) additional private crossings Fencing may be considered when project is implemented 	\$6,643,648	4-25 to 4-34

TABLE A - Northern Reach Projects Continued

Points	Segment	Length	Proposed Improvements	Cost Estimate	Document Reference Page
24	1 - Waddell Bluffs	1.06 miles	<ul style="list-style-type: none"> • 0.87 miles (4,600 LF) Class III on-street/road shoulder bike route • 0.19 miles (1,000 LF) unpaved native soil trail • Unpaved roadway shoulder on coastal side of Highway 1 • Fencing may be considered when project is implemented 	\$107,120	4-5 to 4-8
24	2 - Greyhound Rock/Cal Poly Bluffs	4.77 miles	<ul style="list-style-type: none"> • 4.77 miles of primarily existing road shoulder improvements due to limited available space and adjacent public land on the coastal side of State Highway 1 • Routine road edge clearing, signs, and shoulder pavement striping • Fencing may be considered when project is implemented 	\$308,032	4-9 to 4-14
21	4 - Davenport Landing/End of Railroad Tracks	3.64 miles	<ul style="list-style-type: none"> • 1.38 miles (7,300 LF) multi-use trail (Class I) • 1.41 miles (7,470 LF) bluff trail (Segment 4A) • 0.85 miles (4,510 LF) on-street bike lanes (Segment 4B) • One (1) Highway 1 crossing at Davenport Landing Rd. • One (1) trail crossing in front of cement plant • Three (3) road crossings • Fencing may be considered when project is implemented 	\$2,685,424	4-21 to 4-24
15	3 - Upper Coast Dairies at Scott Creek	1.11 miles	<ul style="list-style-type: none"> • 1.11 miles (5,870 LF) multi-use paved path (Class I) • One (1) preengineered bike/pedestrian bridge, 150-foot span • Fencing may be considered when project is implemented 	\$2,550,096	4-15 to 4-20
TOTALS		21.13 miles		\$20,657,456	



CENTRAL REACH PROJECTS AND COSTS

The Central Reach includes Segments 6-14. Table B prioritizes the segments by the number of points they received. The segments that received the most number of points are considered the most feasible for implementing within a short time frame. This includes Segments 7, 9, and 8 (in that order) as the top three segments.

These segments provide gap closures to existing MBSST Network segments, provide access to numerous activity centers, connect to the coastal edge and beaches, and provide connectivity to other existing local and regional bikeway and pedestrian facilities. These segments are located in some of the most densely populated areas of the MBSST Network and provide ideal start/end points from residential neighborhoods. Some of the segments that received a lower number of points did so due to influences such as: high cost of construction, difficult or numerous rail crossings, narrow right-of-way, minimal access to greater population, and other limiting factors. However, these segments serve to close gaps in the overall MBSST Network, which will help elevate their importance for funding.

TABLE B - Central Reach Projects

Points	Segment	Length	Proposed Improvements	Cost Estimate	Document Reference Page
33	7 - Coastal Santa Cruz	3.10 miles	<ul style="list-style-type: none"> 2.17 miles (11,450 LF) multi-use paved path (Class I) along rail right-of-way 0.08 miles (410 LF) on-street bike route 0.85 miles (4,480 LF) multi-use paved path (Class I) along the coastal side of the rail right-of-way (Segment 7A) Fourteen (14) street crossings Three (3) rail crossings and one (1) additional private crossing One (1) preengineered bike bridge (Moore Creek crossing) Existing staging area at Depot Park Fencing may be considered when project is implemented 	\$11,218,016	4-39 to 4-44
31	9 - Twin Lakes	1.73 miles	<ul style="list-style-type: none"> 1.53 miles (8,100 LF) multi-use paved path (Class I) 0.20 miles (1,040 LF) on-street facilities (Segments 9A and 9B) One (1) new preengineered bike/pedestrian bridge crossings over the harbor One (1) new preengineered bike/pedestrian bridge crossing Upper Schwan Lagoon One (1) new preengineered bike/pedestrian crossing (trail culvert crossing) near El Dorado Ave. Four (4) road crossings (Mott Ave., Seabright Ave., 7th Ave.) Two (2) rail crossings (trail spur at El Dorado Ave., 7th Ave.) Fencing may be considered when project is implemented 	\$11,914,384	4-51 to 4-56

24



TABLE B - Central Reach Projects Continued

Points	Segment	Length	Proposed Improvements	Cost Estimate	Document Reference Page
30	8 - Santa Cruz Beach Boardwalk	0.77 miles	<ul style="list-style-type: none"> 0.77 miles (4,070 LF) existing Class II bike lanes One (1) new preengineered bike and pedestrian bridge, 400-foot span Improvements of striping to existing cycle track with future roadway roundabout at Pacific Ave. and Beach St. (2000 LF) Upgrade existing rail trail to the minimum 8-foot standard from Depot Park to the intersection of Pacific Ave. and Beach St. One (1) rail crossing with upgrades to Beach St. and Pacific Ave. intersection Two (2) street crossings with upgrades to Beach St. and Pacific Ave. intersection Fencing may be considered when project is implemented 	\$10,314,240	4-45 to 4-50
28	6 - Wilder Ranch Trailhead/Shaffer Road	1.49 miles	<ul style="list-style-type: none"> 1.36 miles (7,160 LF) multi-use paved path (Class I) along the coastal side of the rail right-of-way 0.13 miles (670 LF) native soil coastal bluff trails (Segment 6A) One (1) road crossing of Schaffer Rd. Two (2) culvert crossings up the coast from Wilder Ranch trailhead and three (3) additional private crossings Fencing may be considered when project is implemented 	\$3,114,224	4-35 to 4-38
28	11 - Capitola-Seacliff	3.20 miles	<ul style="list-style-type: none"> 3.20 miles (16,880 LF) multi-use paved path (Class I) along the rail right-of-way Bike and pedestrian facilities to be included in any design plans for new rail bridge replacement of the Soquel Creek rail crossing Two (2) preengineered bike/pedestrian bridges (one [1] at New Brighton State Beach parking lot and one [1] at Borregas Creek) Five (5) at-grade street crossings (47th St., Monterey Ave., New Brighton Rd., Estates Dr., Mar Vista Dr.) One (1) private at-grade street crossing (Grove Ln.), one (1) private at-grade crossing at 48th St., and one (1) additional private crossing One (1) rail crossing at 47th St. Fencing may be considered when project is implemented 	\$8,868,336	4-61 to 4-66

25

TABLE B - Central Reach Projects Continued

Points	Segment	Length	Proposed Improvements	Cost Estimate	Document Reference Page
24	10 - Live Oak/Jade St Park	1.50 miles	<ul style="list-style-type: none"> 1.50 miles (7,940 LF) multi-use paved path (Class I) along the rail right-of-way Relocation of approximately 1.0 mile (5,280 LF) of rail track and signal arm assemblies One (1) preengineered bike/pedestrian bridge crossing at Rodeo Gulch Creek 200-foot span Four (4) non-signalized street crossings (17th Ave., 30th Ave., 38th Ave., 41st Ave.) One (1) at-grade rail crossing Fencing may be considered when project is implemented 	\$9,707,440	4-57 to 4-60
22	14 - Seascape	1.17 miles	<ul style="list-style-type: none"> 1.17 miles (6,160 LF) multi-use paved path (Class I) along the inland rail right-of-way Two (2) at-grade road crossings (Clubhouse Dr., Seascape Blvd.) One (1) trail undercrossing of the existing rail bridge at Hidden Beach Fencing may be considered when project is implemented 	\$2,079,872	4-79 to 4-82
17	13 - Rio Del Mar-Hidden Beach	0.85 miles	<ul style="list-style-type: none"> 0.85 miles (4,510 LF) multi-use paved path (Class I) along the coastal side rail right-of-way One (1) undercrossing connection to Rio Del Mar Blvd. One (1) preengineered bike/pedestrian bridge, 200-foot span One (1) existing staging area at Hidden Beach Fencing may be considered when project is implemented 	\$3,306,112	4-73 to 4-78
17	12 - Aptos Village	1.14 miles	<ul style="list-style-type: none"> 1.14 miles (6,030 LF) multi-use paved path (Class I) along the rail right-of-way Three (3) preengineered bike/pedestrian bridges (bridge spans vary) One (1) retrofit of northern Highway 1 concrete bridge for bike and pedestrian facility Three (3) at-grade street crossings (State Park Dr., Aptos Creek Rd., Trout Gulch Rd.) One (1) rail crossing at Trout Gulch Rd. Fencing may be considered when project is implemented 	\$10,831,696	4-67 to 4-72
TOTALS		14.95 miles		\$71,354,320	

26

WATSONVILLE REACH PROJECTS AND COSTS

The Watsonville Reach includes Segments 15-20. Table C prioritizes the segments by the number of points they received. The segments that received the most number of points are considered the most feasible for implementing within a short time frame. This includes Segments 18, 19, and 20 (in that order) as the top three segments.

These segments provide gap closures to existing MBSST Network segments, provide access to numerous activity centers, and provide connectivity to other existing local and regional bikeway and pedestrian facilities. These segments are located in some of the most densely populated areas of the Watsonville Reach and provide ideal start/end points from residential neighborhoods and the city of Watsonville. Segments 16 and 15 may require a bit more lead time to resolve physical design constraints, right-of-way conflicts, bridge design and construction issues, and other budgetary challenges. However, these segments serve to close gaps in the overall MBSST Network, which will help elevate their importance for funding.

TABLE C - Watsonville Reach Projects

Points	Segment	Length	Proposed Improvements	Cost Estimate	Document Reference Page
26	18 - Watsonville Slough Open Space Trails	4.01 miles	<ul style="list-style-type: none"> 1.20 miles (6,350 LF) multi-use paved path (Class I) along the inland rail right-of-way 2.81 miles (14,820 LF) Class II bike lanes (Segments 18A and 18B) One (1) rail culvert crossing Two (2) road crossings (one [1] at Lee Rd. and one [1] at Ohlone Pkwy.) This segment also includes fencing for agricultural operations and safety; additional fencing may be considered when project is implemented 	\$3,010,720	4-99 to 4-104
23	19 - Walker Street, City of Watsonville	0.47 miles	<ul style="list-style-type: none"> 0.29 miles (1,510 LF) existing Class II bike lane along Walker St. right-of-way 0.18 miles (950 LF) proposed Class II bike lane along Walker St. right-of-way (Segment 19A) New sidewalks on the inland side of Walker St. from the intersection of W. Riverside Dr. to the end of Walker St., connecting to the Pajaro River One (1) at-grade street crossing at Riverside Dr. Additional fencing may be considered when project is implemented 	\$381,280	4-105 to 4-108
20	20 - Pajaro River	0.74 miles	<ul style="list-style-type: none"> 0.74 miles (3,930 LF) multi-use paved path (Class I) along the inland rail right-of-way One (1) new preengineered bike/pedestrian bridge at the Pajaro River crossing, 200-foot span 3,930 feet of fencing for agricultural operations and safety; additional fencing may be considered when project is implemented 	\$3,009,136	4-109 to 4-112

TABLE C - Watsonville Reach Projects Continued

Points	Segment	Length	Proposed Improvements	Cost Estimate	Document Reference Page
20	16 - Ellicott Slough	2.66 miles	<ul style="list-style-type: none"> 1.78 miles (9,400 LF) multi-use paved path (Class I) along the rail right-of-way 0.40 miles (2,100 LF) multi-use paved path (Class I) coastal trail (Segment 16A) 0.48 miles (2,530 LF) Class II bike lanes (Segment 16B) Two (2) at-grade road crossings (Spring Valley Rd., Peaceful Valley Rd.) One (1) at-grade rail crossing (Spring Valley Rd.) Fencing may be considered when project is implemented 	\$3,613,600	4-89 to 4-92
20	15 - Manresa State Beach	1.37 miles	<ul style="list-style-type: none"> 1.37 miles (7,240 LF) multi-use paved path (Class I) along the inland rail right-of-way Two (2) at-grade road crossings (Summer Ave., Camino Al Mar) and two (2) additional private crossings Two (2) preengineered rail bridge crossings (one [1] 300-foot span at La Selva, and one [1] 225-foot span at San Andreas Rd.) One (1) rail at-grade crossing (Camino Al Mar) Fencing may be considered when project is implemented 	\$4,735,680	4-83 to 4-88
14	17 - Harkins Slough	4.0 miles	<ul style="list-style-type: none"> 4.0 miles (21,140 LF) multi-use paved path (Class I) along the inland rail right-of-way Seven (7) rail bridge/culvert crossings of varying lengths One (1) private farm road crossing (1/2 mile west of Lee Rd.) One (1) private road crossing at Buena Vista Dr. and one (1) additional private crossing This segment also includes fencing for agricultural operations and safety; additional fencing may be considered when project is implemented 	\$19,961,888	4-93 to 4-98
TOTALS		13.25 miles		\$34,712,304	



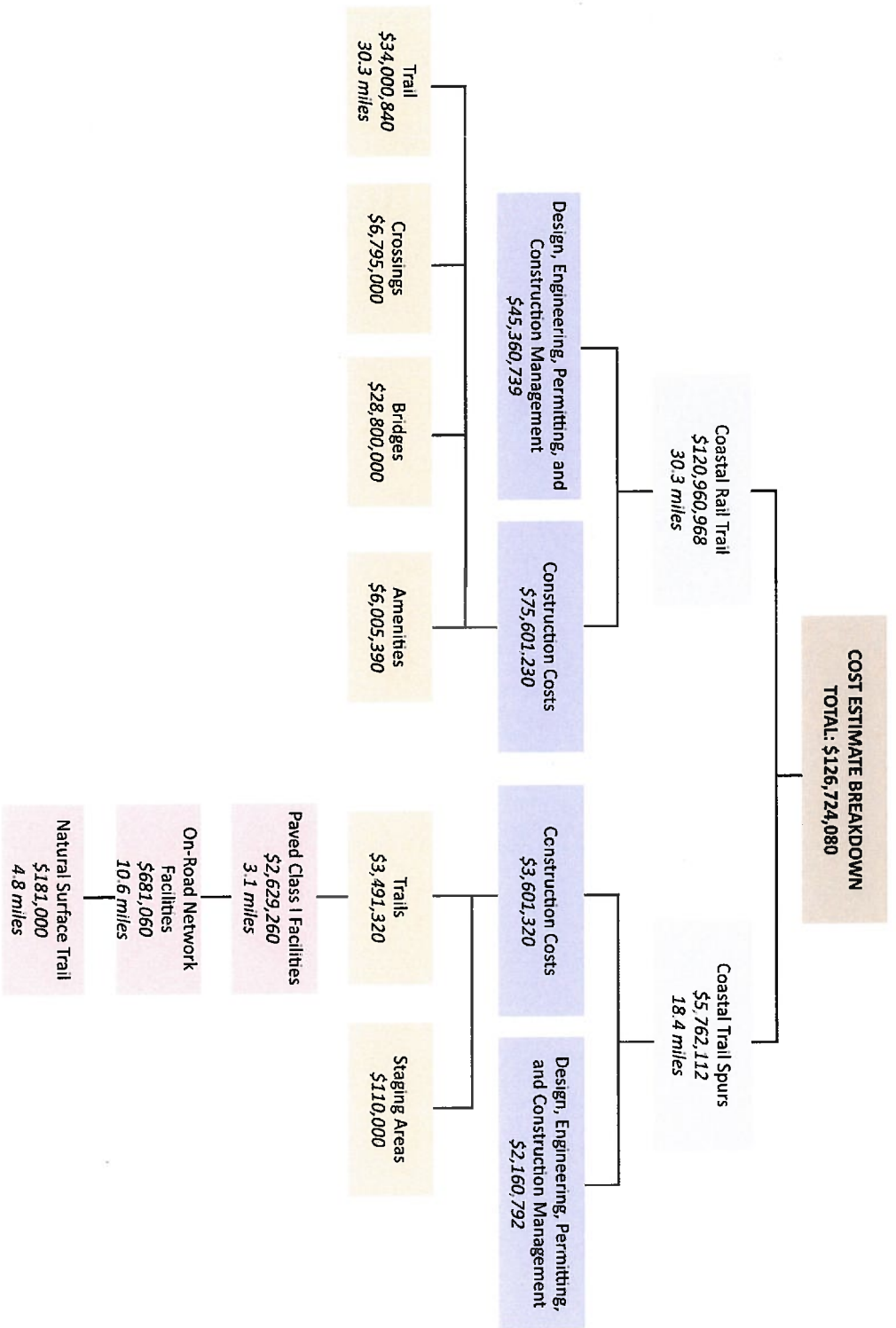
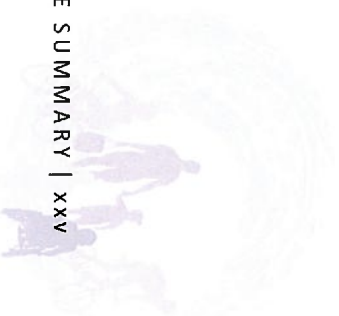


Figure A Summary of cost by trail facility type



I.VIII PROJECT IMPLEMENTATION

In regard to MBSST Network improvements, the main role of the RTC is to provide ongoing coordination services and funding for implementation of the MBSST Network. The RTC will take the lead in preparing memoranda of understanding (MOUs) between itself and implementing entities to clarify roles, responsibilities for design, development, construction, monitoring, and maintenance of the MBSST Network. The RTC may itself act as the implementing entity and construction manager.

The following describes the RTC's implementation responsibilities in greater detail:

- Phasing - Taking many considerations into account, including the prioritization provided in Section 6.3, the RTC will coordinate with implementing entities to identify segments that are to be implemented.
- Funding - Upon identification of a segment, the RTC will organize a funding strategy to design, construct, and maintain the segment. RTC staff will assist implementing entities in developing fundable projects, matching projects with funding sources, and helping to complete competitive funding applications. In some cases, RTC may act as the project sponsor or co-sponsor.
- Progress - Through board presentations, website notifications, and other venues, the RTC will provide regular updates to the public regarding the status of the MBSST Network development.
- Oversight - The RTC will work closely with implementing entities, Planning, Parks, and Public Works staff to implement MBSST Network segments.
- Coordination - Finally, should the RTC incur additional operating expenses to coordinate implementation, maintenance, operation, and liability of the MBSST Network through agreements with implementing entities, funding will need to be identified.

The following describes implementing entities' responsibilities in greater detail:

- Once the segment as been identified and funded, the RTC and/or implementing entities may employ in-house staff or retain a qualified bicycle and pedestrian trail planning consultant to design the MBSST Network construction documents. After review by the RTC's advisory committees and implementing entities, boards, and committees, the RTC will review and approve of all MBSST Network designs submitted by the implementing entities.
- In conjunction with implementing entities and/or a trail planning consultant, a series of workshops should be conducted to introduce the project to the public and to identify any new information not included in this Master Plan.
- Implementing entities will be responsible for overseeing any necessary environmental clearance. The implementing entities will obtain the necessary planning, environmental, and development permits.
- The RTC may oversee project construction in consultation with the implementing entity and/or trail planning consultant.
- The RTC will also coordinate, or provide coordination assistance, between rail and agricultural operations to ensure minimal service disruptions.

I.IX NEXT STEPS

This Master Plan is a planning-level study of the location and configuration of the MBSST Network. Implementation of actual MBSST Network projects will require additional site-specific study, planning, and design. Each project will require thorough environmental study and documentation, review, and permitting consistent with the complexity of the improvements, sensitive resources, and regulatory and easement requirements. A primary objective of the Master Plan is to identify and, if possible, avoid significant constraints, and address the anticipated implementation criteria and requirements.



JOHN J. PRESLEIGH
DIRECTOR OF PUBLIC WORKS

County of Santa Cruz

DEPARTMENT OF PUBLIC WORKS PARKS, OPEN SPACE, AND CULTURAL SERVICES DIVISION

979 17TH AVENUE, SANTA CRUZ, CA 95062
(831) 454-7901 FAX: (831) 454-7940 TDD: (831) 454-7978

AGENDA: FEBRUARY 25, 2014

February 13, 2014

SANTA CRUZ COUNTY BOARD OF SUPERVISORS

701 Ocean Street
Santa Cruz, California 95060

**SUBJECT: RESOLUTION REQUESTING PLACEMENT OF A PARCEL TAX FOR
THE BENEFIT OF SANTA CRUZ COUNTY PARKS ON THE JUNE 3, 2014,
BALLOT AND RELATED ACTIONS**

Members of the Board:

On February 11, 2014, your Board accepted a report on public opinion surveying in support of County Parks and Recreation programs and directed Public Works to return on today's agenda with recommendations and resolutions necessary to place a parks measure on the June 3, 2014, ballot.

Santa Cruz County parks give access to our unique natural heritage from mountains to the coastline. Access to local parks helps maintain our high quality of life and makes Santa Cruz County a great place to live and work. Santa Cruz County Parks provides playgrounds, athletic fields, picnic areas, pools, beach access and opportunities for healthy recreation for County residents.

County parks are a well-used resource by members of the community. County Parks maintains 59 parks, beach access and open space areas encompassing over 1400 acres. In addition, Parks provides after-school programs, swim lessons, art and science enrichment, and sports leagues for children. Senior programming provides opportunities for older residents to maintain fitness and an active lifestyle. Parks staff also oversees the County's Public Art Program.

31

Stable, local funding is essential for our parks. For the last 20 years, County Service Area (CSA) No. 11, Parks and Recreation District service charges have allowed for the maintenance, operations and expansion of the County park system to meet the needs of the community. The current annual service charge of \$6.58 per residential unit, is used to pay costs for park acquisitions and improvements, to be completed by the end of the 2013/2014 fiscal year. As a result of budget cuts in recent years, the County has worked creatively to maintain a high level of service by leveraging resources and streamlining operations, including making Parks a division of the Department of Public Works in 2011. However, ongoing budget cuts have had a severe impact on our ability to keep up with maintenance of County parks and the list of deferred maintenance and repairs continues to grow.

As your Board may recall, with this background in mind, Gene Bregman & Associates was hired to conduct a poll of likely voters in August 2103 to determine the level of voter support for a new parcel tax to benefit County parks and programs. A parcel tax requires 2/3 voter approval. The results of that poll were shared with your Board on September 10, 2013, and again on February 11, 2013. As you will recall, the results of that survey indicated a very solid level of support for a special tax of \$6.58 per year (86 percent support), a solid level of voter support for a special tax of \$9.87 per year (72 percent), and just sufficient level of voter support for a special tax of \$14.16 per year (66 percent). Voters rated clean restroom; garbage pick-up; after school and summer recreation programs for children; and maintaining public recreational facilities, such as beach access sites, play areas, and picnic areas highest as very important services.

On the February 11, 2014, your Board accepted recommendations that a parcel tax of less than \$10.00 be considered. After careful consideration and consultation with the County's consultants the following ballot question to be put before voters in the unincorporated County outside of recreation and park district has been prepared for your consideration:

Funding for Santa Cruz County Parks

To properly maintain Santa Cruz County parks, facilities, beach access, and open space; clean bathrooms; repair roofs and electrical systems; keep facilities open and safe; provide recreation to children, teenagers, families, and seniors: shall Santa Cruz County levy an annual tax of \$8.50 per improved parcel, replacing an expiring service charge on residential units, within the County's Park and Recreation District, with all funds staying local?

Yes _____ No _____

A parcel tax of \$8.50 on all improved parcels within the unincorporated County outside of recreation and park districts will provide approximately \$355,000 per year for County parks maintenance, operations and programs. These funds would ensure that our parks are clean and maintained by providing funding necessary for frequent cleaning of park restrooms, frequent pickup of garbage at all County parks, beaches and open space areas, and the maintenance and repair of recreational and restroom facilities. In addition, the funds would be used to continue to offer safe and healthy activities for children and youth including after-school and summer recreation programs for children, swim lessons and arts and science enrichment throughout the year.

It is therefore recommended that the Board of Supervisors take the following actions:

1. Accept and file this report on the placement of a parcel tax for the benefit of Santa Cruz County Parks on the June 3, 2014, ballot.
2. Adopt the attached resolution calling and providing for a special election to be held on Tuesday, June 3, 2014, for the purpose of submitting to the qualified voters of the County of Santa Cruz a measure proposing the Levy of a Special Tax for County Parks and Recreation Purposes and Consolidating said Special County Election with Gubernatorial Primary Election on Tuesday, June 3, 2014.
3. Advise the Auditor-Controller and County Counsel of the requirements for independent analyses contained in the resolution.
4. Direct the Clerk of the Board to submit the Resolution to the County Clerk no later than 5:00 p.m. on March 7, 2014.

Yours truly,


JOHN J. PRESLEIGH
Director of Public Works

JJP:BL:rw

RECOMMENDED FOR APPROVAL:


SUSAN A. MAURIELLO
County Administrative Officer

Copy to: County Counsel
Auditor-Controller
County Administrative Office
County Clerk
Parks

WHEREAS, it is necessary that a special County election be held in accordance with law for the purpose of submitting to the qualified voters within CSA No. 11 a measure on whether to approve the proposed special tax pursuant to Government Code Sections 25215.2, and 50075 *et seq.* and in compliance with California Constitution Article XIII A; and

NOW, THEREFORE, BE IT RESOLVED AND ORDERED by the Board of Supervisors of the County of Santa Cruz acting as the governing authority of CSA No. 11 that, subject to approval of the special tax measure set forth in this Resolution by two-thirds of the qualified voters voting in a special election, a special tax be levied on all improved parcels within CSA No. 11 which consists of the unincorporated areas of the County outside of existing recreation and park districts:

1. Commencing with the 2014-15 fiscal year on July 1, 2014 a special tax is to be levied against all improved parcels within CSA No. 11 in the annual amount of \$8.50 per parcel; and
2. The County shall maintain a separate account into which the proceeds of this tax shall be deposited and then only be used for the purpose of providing, maintaining, and preserving County parks and open space and to operate recreation and cultural programs within CSA No. 11;
3. The special tax shall be collected on the property tax roll in the same manner and at the same time as County property taxes, and shall be subject to all the laws pertaining to the levy, collection, and enforcement of County property taxes;
4. If any provision of this Resolution or of the special tax measure contained herein or the application of any such provisions to any persons or circumstances is held invalid, such invalidity shall not affect any other provision or application that can be given effect without the invalid provision or application, and to this extent the provision therefore shall be severable.

BE IT FURTHER RESOLVED AND ORDERED by the Board of Supervisors of the County of Santa Cruz that a special County election shall be and the same is hereby called and ordered to be held within CSA No. 11 on Tuesday, June 3, 2014, for the purpose of submitting to the qualified voters of the CSA No. 11 the following special tax measure substantially similar to the following:

1. Santa Cruz County Parks – Special Tax Ballot Measure Question

Funding for Santa Cruz County Parks

To properly maintain Santa Cruz County parks, facilities, beach access, and open space; clean bathrooms; repair roofs and electrical systems; keep facilities open and safe; provide recreation to children, teenagers, families, and seniors: shall Santa Cruz County levy an annual tax of \$8.50 per improved parcel, replacing an expiring service charge on residential units within the County's Park and Recreation District, with all funds staying local?

Yes ____ No ____

Pg 6.

- 2. The Board of Supervisors submits to the qualified voters of CSA No. 11 at said special election, said Ballot Measure Question as set forth herein and designates and refers to said measure as the measure to be set forth on the ballots for use in said election.
- 3. Said special election shall be held and conducted, the votes received and canvassed, and the votes received and canvassed, and the returns thereof made and the results thereof ascertained and determined in accordance with law.
- 4. Said special election hereby called shall be and is hereby consolidated with the Gubernatorial Primary Election to be held on Tuesday June 3, 2014, in all respects and all as required by and pursuant to law.
- 5. In accordance with the provision of Section 9160 (b) of the California Elections Code, the County Counsel is hereby directed to prepare an impartial analysis of this measure.
- 6. In accordance with the provision of Section 9160 (c) of the California Elections Code, the County Auditor is hereby directed to prepare a fiscal impact statement of this measure.
- 7. Arguments for and against this measure may be submitted in conformance with California Elections Code Section 9161 and following.
- 8. The Clerk of the Board of Supervisor shall file a copy of this Resolution with the County Clerk.
- 9. If enacted, the County shall prepare the annual report required by subdivision (d) of Government Code section 50075.1.
- 10. Any legal challenge to this resolution or to the special tax adopted by this resolution shall be brought as provided in Government Code Section 50077.5.

PASSED AND ADOPTED by the Board of Supervisors of the County of Santa Cruz, State of California, this ____ day of _____, 2014, by the following vote:

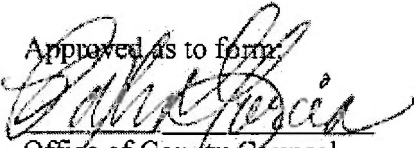
AYES: SUPERVISORS
 NOES: SUPERVISORS
 ABSENT: SUPERVISORS
 ABSTAIN: SUPERVISORS

 Chairperson of said Board

ATTEST: _____
 Clerk of said Board

55

36

Approved as to form:

Office of County Counsel

- Distribution:
County Counsel
County Administrative Officer
Public Works
Auditor-Controller
County Clerk Elections



February 21, 2014

Santa Cruz County Board of Supervisors
701 Ocean Street
Santa Cruz, CA 95060

RE: February 25th Agenda, Item 55

Dear Supervisors:

Friends of Santa Cruz State Parks is proud to be part of a network of parks and open spaces that improves our quality of life here in Santa Cruz County. Our parks not only provide great benefits to local residents, they attract visitors from all over the world, who in turn support our local economy.

Having a source of sustainable funding is critical to the maintenance and support of these local treasures.

Thank you for your consideration.

Sincerely,

A handwritten signature in black ink, appearing to read "Bonny Hawley".

Bonny Hawley, Executive Director
Friends of Santa Cruz State Parks

38





County of Santa Cruz

DEPARTMENT OF PUBLIC WORKS PARKS, OPEN SPACE, AND CULTURAL SERVICES DIVISION

979 17TH AVENUE, SANTA CRUZ, CA 95062

(831) 454-7901 FAX: (831) 454-7940 TDD: (831) 454-7978

JOHN J. PRESLEIGH
DIRECTOR OF PUBLIC WORKS

AGENDA: JANUARY 14, 2014

December 16, 2013

SANTA CRUZ COUNTY BOARD OF SUPERVISORS
701 Ocean Street
Santa Cruz, California 95060

SUBJECT: 2014 PUBLIC ART PLAN

Members of the Board:

On January 13, 1998, your Board approved the Santa Cruz County Public Art and Design Guidelines. No. 4.2 of the Guidelines states:

The Director of Parks, Open Space and Cultural Services or designee shall present upcoming capital improvement projects to the Arts Commission (Commission) which will on an annual basis create a proposed Public Art Plan. This plan shall include the proposed art projects, budgets, recommendations for the specific approach to art in each of the projects, and definition of the artist selection process for approval by the Board of Supervisors.

On November 9, 2013, the proposed 2014 Public Art Plan was presented to the Commission (see attached). The Commission is very pleased about the prospect of undertaking a number of new public art projects in 2014.

It is therefore recommended that the Board of Supervisors approve the 2014 Public Art Plan.

Yours truly,

JOHN J. PRESLEIGH
Director of Public Works

JJP:KDW:sh

Attachment

RECOMMENDED FOR APPROVAL:

SUSAN A. MAURIELLO
County Administrative Officer

Copy to: Parks, Arts Commission

Public Art Plan - Arts Commission - 2014.doc

Santa Cruz County Arts Commission Public Art Plan 2014

Project	Original Budget	Estimated \$ Available for Arts Percent for Arts	Original Source of Funding	Public Art Process Start Date	Construction Start Date	Public Art Project Completion Date	Selection Process
PROJECTS ALREADY IN PROGRESS							
Hidden Beach Pump Station		\$65,500	Sanitation District	Started	Spring 2014	Summer 2014	Open Competition
The Farm Park	\$6,000,000 (1)	\$120,000	RDA	Started	Interim development in progress	Fall 2014	Open Competition
Twin Lakes	\$750,000	\$15,000	County Plant Budget	Started	Fall 2014	Summer 2015	Open Competition
Floral Park	\$870,000 (1)	\$17,400	RDA	Started	N/A	Spring 2014	Open Competition
Outside the Box	--	\$20,000	DPW-trans	Started	Ongoing	Ongoing	Open Competition
Chanticleer Park	\$4,000,000 (1)	\$86,000	RDA	Started	Interim development in progress	Winter 2013	Open Competition
NEW PROJECTS							
Heart of Soquel	\$490,000 (2)	\$9,800	County Plant Budget	Winter 2013	Summer 2014	Fall 2014	Open Competition
McGregor	\$653,000 (2)(3)	\$13,100	County Plant Budget	Winter 2013	Summer 2014	Fall 2014	Open Competition

(1) There is no longer any RDA funding for the construction of these parks; the figure shown in "Original Budget" for these projects is only provided as a reference only.

(2) The budget amount for new projects reflects the construction budget only, as the 2% public art policy applies to construction costs.

(3) Budget revised to reflect construction budget for Phase 1 improvements.



County of Santa Cruz

DEPARTMENT OF PUBLIC WORKS PARKS, OPEN SPACE, AND CULTURAL SERVICES DIVISION

979 17TH AVENUE, SANTA CRUZ, CA 95062

(831) 454-7901 FAX: (831) 454-7940 TDD: (831) 454-7978

JOHN J. PRESLEIGH
DIRECTOR OF PUBLIC WORKS

February 19, 2014

SUBJECT: APPROVAL OF CONCEPTUAL INTERIM PLAN FOR THE ADDITION OF TWO DISC GOLF TEE PADS/BASKETS AT THE FARM PARK AT SOQUEL DRIVE AND CUNNISON LANE

Members of the Parks and Recreation Commission:

As your Commission is aware, members of the Soquel High Disc Golf Club have expressed interest in opportunities for locating disc golf improvements in the Soquel area. Currently two tee pads/baskets are located on the southeast portion of the Farm Park at the corner of Soquel Drive and Cunnison Lane. Members of the disc golf club have visited the site with County Park staff and identified the opportunity for two additional tee pads/baskets. County Park staff will monitor the installation of the baskets and new interim use related to disc golf at the park. The addition of these tee pads/baskets would improve the opportunity for disc golf practice at the Farm Park as an interim use of the park site.

The approved Master Plan for the Farm Park includes two disc golf tee pads/baskets for practice purposes. In addition, the Master Plan includes a community center, skate feature, half-court, and community gardens on the Cunnison Lane portion of the park, and bocce ball, a playground, restroom, picnic and turf areas on the Tee Street portion of the property connected by a pedestrian bridge over the stream. The County has received a Proposition 84 Sustainable Communities – Urban Greening Grant for stream and oak woodland habitat improvements and the construction of the community garden and a small parking area. Those improvements are expected to be under construction this summer. The additional disc golf tee pads/baskets are proposed to be located south of the small parking area. In addition, the Board of Supervisors recently directed staff to develop funding strategies for implementation of the Park Master Plan.

It is recommended that the Parks and Recreation Commission approve the placement of two additional disc golf tee pads/baskets on the southeast portion of the Farm Park located at the corner of Soquel Drive and Cunnison Lane as an interim use of the park site.

Yours truly,

JOHN J. PRESLEIGH
Director of Public Works

By:


Betsy Lynberg
Assistant Public Works Director – Parks Division

BAL:mh
Attachments
Farm Disc Golf-update.doc

Public Notice

The Santa County
Parks and Recreation Commission
will consider a proposal to install two additional
disc golf baskets/teepads on the Cunnison Lane /
Soquel Drive section of the Farm Park and will
also receive an update on the upcoming riparian
restoration and community gardens project
at the commission meeting on:

Monday, February 24, 2014
7:00 - 9:00 p.m.

Simpkins Family Swim Center - Community Room
979 17th Avenue, Santa Cruz

The public is invited to attend.

For more information, please visit:
www.scparks.com/parks&rec_commission.html
or call: (831) 454-7901

Public Notice

The Santa County
Parks and Recreation Commission
will consider a proposal to install two additional
disc golf baskets/teepads on the Cunnison Lane /
Soquel Drive section of the Farm Park and will
also receive an update on the upcoming riparian
restoration and community gardens project
at the commission meeting on:

Monday, February 24, 2014
7:00 - 9:00 p.m.

Simpkins Family Swim Center - Community Room
979 17th Avenue, Santa Cruz

The public is invited to attend.

For more information, please visit:
www.scparks.com/parks&rec_commission.html
or call: (831) 454-7901

Public Notice

The Santa County
Parks and Recreation Commission
will consider a proposal to install two additional
disc golf baskets/teepads on the Cunnison Lane /
Soquel Drive section of the Farm Park and will
also receive an update on the upcoming riparian
restoration and community gardens project
at the commission meeting on:

Monday, February 24, 2014
7:00 - 9:00 p.m.

Simpkins Family Swim Center - Community Room
979 17th Avenue, Santa Cruz

The public is invited to attend.

For more information, please visit:
www.scparks.com/parks&rec_commission.html
or call: (831) 454-7901

Public Notice

The Santa County
Parks and Recreation Commission
will consider a proposal to install two additional
disc golf baskets/teepads on the Cunnison Lane /
Soquel Drive section of the Farm Park and will
also receive an update on the upcoming riparian
restoration and community gardens project
at the commission meeting on:

Monday, February 24, 2014
7:00 - 9:00 p.m.

Simpkins Family Swim Center - Community Room
979 17th Avenue, Santa Cruz

The public is invited to attend.

For more information, please visit:
www.scparks.com/parks&rec_commission.html
or call: (831) 454-7901



County of Santa Cruz

DEPARTMENT OF PUBLIC WORKS PARKS, OPEN SPACE, AND CULTURAL SERVICES DIVISION

979 17TH AVENUE, SANTA CRUZ, CA 95062

(831) 454-7901 FAX: (831) 454-7940 TDD: (831) 454-7978

JOHN J. PRESLEIGH
DIRECTOR OF PUBLIC WORKS

February 14, 2014

SUBJECT: DEFER REPORT ON OFF-LEASH DOGS AREAS TO AUGUST 19, 2014
COMMISSION MEETING

Members of the Parks and Recreation Commission:

On October 21, 2013, your Commission considered a report on proposals to allow dogs off-leash on Live Oak beaches and a proposal from LOOLA to allow dogs off-leash on a County-owned beach between 20th Avenue and Corcoran Lagoon between sunrise to sunset daily. At that time staff was directed to prepare initial criteria for off-leash dog areas and an initial review of the County park and beach property inventory to identify possible opportunities for fenced and unfenced off-leash dog areas in County parks, and report back to the Commission no later than April 2014.

In October 2013 it was anticipated that the vacant Parks Resource and Development Manager position would be filled providing staff to prepare this work. However, due to continuing funding constraints, Parks has been unable to fill this position. Therefore, staff recommends deferring consideration of this report to the August 19, 2014, Parks and Recreation Commission agenda.

Yours truly,

JOHN J. PRESLEIGH
Director of Public Works

By:

Betsey Lynberg
Assistant Public Works Director – Parks Division

BAL:mh

Off-leash deferral.doc

WRITTEN CORRESPONDENCE LISTING:

The Written Correspondence Listing is established to act as a report of materials received by the Commission as a whole, but may also include items requested for inclusion by individual Commissioners.

The Parks and Recreation Commission has received the following items of correspondence which require no official action by the Commission at this time:

1. Letter from Supervisor Neal Coonerty dated January 7, 2014, regarding Parks and Recreation report for calendar years 2012 and 2013.
2. Letter from Supervisor Zach Friend dated January 14, 2014, regarding Parks and Recreation report for calendar years 2012 and 2013.
3. Email from Jean Brocklebank dated January 26, 2014, regarding Dog Park Master Plan.
4. Email from Gina Brown dated February 16, 2014, in support of off-leash dogs.
5. Letter from Commissioner Minott dated February 17, 2014, regarding appointment of Board members to the non-profit Friends of Santa Cruz County Parks.