



County of Santa Cruz

DEPARTMENT OF PUBLIC WORKS PARKS, OPEN SPACE, AND CULTURAL SERVICES DIVISION

979 17TH AVENUE, SANTA CRUZ, CA 95062

(831) 454-7901 FAX: (831) 454-7940 TDD: (831) 454-7978

JOHN J. PRESLEIGH
INTERIM DIRECTOR

PARKS AND RECREATION COMMISSION AGENDA

Monday, March 19, 2012
7:00 p.m.
Regular Meeting

Simpkins Family Swim Center
979 17th Avenue
Santa Cruz, CA 95062

- I. CALL TO ORDER / ROLL CALL
- II. AGENDA MODIFICATIONS OR LATE ADDITIONS
- III. CONSENT AGENDA
 - A. Minutes from November 14, 2011, and January 23, 2012 (Approve)...Pages 1-2
 - B. Information and Reports (Accept and File)
 1. Maintenance Section – Status ReportPages 3-4
 2. Facilities Section – Status ReportPage 5
 3. Planning Section – Status Report.....Pages 6-7
 4. Recreation Section – Status ReportPages 8-15
 5. Process to Add Disc Golf at Anna Jean Cummings ParkPages 16-38

ORAL COMMUNICATIONS

Opportunity for persons to address the Commission on matters which are within the scope of responsibility of the Commission but not on today's agenda.

- IV. DIRECTOR'S REPORT
- V. REGULAR AGENDA
 - A. INFORMATION ITEMS
 1. Live Oak Youth Center
 2. East Cliff Drive Parkway Construction Update
 3. Carmichael Trail Update
 - B. ACTION ITEMS
None
- VII. WRITTEN CORRESPONDENCE
- VIII. ADJOURNMENT



County of Santa Cruz

DEPARTMENT OF PUBLIC WORKS PARKS, OPEN SPACE, AND CULTURAL SERVICES DIVISION

979 17TH AVENUE, SANTA CRUZ, CA 95062

(831) 454-7901 FAX: (831) 454-7940 TDD: (831) 454-7978

JOHN J. PRESLEIGH
INTERIM DIRECTOR

PARKS & RECREATION COMMISSION Minutes of November 14, 2011, 7:00 p.m. meeting 979 17th Avenue, Room B Santa Cruz, California

I. Present: Katharine Minott, Michael Rosenberg, Dave Mercer, Jim Lang

Staff: Betsey Lynberg, Bob Olson

Excused Absence:

Unexcused Absence:

II. CONSENT AGENDA

Approved minutes of the meeting of June 6, 2011

Motion/Second: Lang/Mercer

AYES: 4

NOES: 0

ABSTAIN: 0

ABSENT: 0

Approved consent agenda of November 14, 2011, meeting – with direction to report back at next meeting on process for review and approval of disc golf at Anna Jean Cummings Park.

Motion/Second: Lang/Mercer

AYES: 4

NOES: 0

ABSTAIN: 0

ABSENT: 0

III. Approved 2012 Meeting Schedule

Motion/Second: Mercer/Lang

AYES: 4

NOES: 0

ABSTAIN: 0

ABSENT: 0

IV. The meeting was adjourned at 8:44 PM.



County of Santa Cruz

DEPARTMENT OF PUBLIC WORKS PARKS, OPEN SPACE, AND CULTURAL SERVICES DIVISION

979 17TH AVENUE, SANTA CRUZ, CA 95062

(831) 454-7901 FAX: (831) 454-7940 TDD: (831) 454-7978

JOHN J. PRESLEIGH
INTERIM DIRECTOR

PARKS & RECREATION COMMISSION Minutes of January 23, 2012, 7:00 p.m. meeting 979 17th Avenue, Room B Santa Cruz, California

- I. Present: Katharine Minott, Michael Rosenberg, Steven Bennett
Staff: Betsey Lynberg, Bob Olson, Gretchen Iliff
Excused Absence: Dave Mercer, Jim Lang Unexcused Absence:
- II. CONSENT AGENDA
Postponed approval of November 14, 2011, minutes to March 19, 2012
Motion/Second: Minott/Bennett
AYES: 3
NOES: 0
ABSTAIN: 0
ABSENT: 0
Approved consent agenda of January 23, 2012
Motion/Second: Minott/Bennett
AYES: 3
NOES: 0
ABSTAIN: 0
ABSENT: 0
- III. Approved Biennial Report and Proposed Goals for 2013
Motion/Second: Minott/Bennett
AYES: 3
NOES: 0
ABSTAIN: 0
ABSENT: 0
- IV. The meeting was adjourned at 9:15 PM.



County of Santa Cruz

PARKS, OPEN SPACE & CULTURAL SERVICES

JOHN PRESLEIGH
INTERIM DIRECTOR

979 17TH AVENUE, SANTA CRUZ, CA 95062
(831) 454-7901 FAX: (831) 454-7940 TDD: (831) 454-7978

DATE: March 13, 2012
TO: Parks & Recreation Commission, Arts Commission
FROM: Gretchen Iliff, Maintenance Division
SUBJECT: Status Report on Current Projects - March 2012

PARKS, BUILDING, AND GROUNDS MAINTENANCE

NORTH COUNTY PARKS (Highlands, Ben Lomond, Felton Covered Bridge, Probation, Michael Gray Field, Quail Hollow Ranch and the North Coast).

Tree and vegetation pruning occurred at Felton Covered Bridge Park this month.

Girl Scouts and the Valley Women's Club are removing non-native plants from the nature trail area at Highlands Park. The effort is being spearheaded by valley resident Linda Skeff, who hopes to demonstrate and encourage the removal of non-native plants on both public and private properties.

MID-COUNTY PARKS (Anna Jean Cummings Park, Governmental Center, Emeline Complex, Twin Lakes, Brommer, Floral, Coffee Lane, Soquel Lions, Hestwood, Jose Avenue, Winkle Farm, Moran Lake, Maplethorpe, Santa Cruz Gardens, Mid-County beach access areas).

Felt Street Park opened in the last month. Parks staff is regularly providing maintenance for this park. Due to nice weather, weekend birthday parties seem to be the big activity for the new park.

Staff has spent some time at the Chanticleer Park site this past month. Some signs and trash cans were installed. Staff plan to mow the site, remove some debris, and encourage informal use.

SOUTH COUNTY PARKS (Polo Grounds, Valencia Hall, Hidden Beach, Seascape, Aptos Village, South County Beach access areas, Scott Park, Scott Estate, Simpkins Family Swim Center, Aldridge Lane, Mesa Village, Pinto Lake, Willow Brook, Freedom Government Annex).

Polo and Pinto baseball fields opened a few weeks early this month due to the great weather. Staff is continuing preparation for the opening of the soccer fields on March 16, 2012.

Gopher activity is taking much time this month. There is a huge infestation on all of our athletic fields. Staff are trapping and using rodent gas to limit turf damage.

Staff replaced some of the fencing at Floral Park. The fence was in disrepair, and two large trees were removed that bordered the property lines were also removed.

SIMPKINS FAMILY SWIM CENTER

Scheduled pool closings this month allowed staff to perform some preventative maintenance at the Swim Center. Two pumps were rebuilt, the parking lot was striped, underwater pool lights were replaced, and the pools super chlorinated.

One swim center staff person and one north County staff person replaced the 6-inch backflow device at Pinto Lake Park this month. The George Wilson Company wanted \$6,800 to do the work, so Parks staff purchased the unit for \$3,200 and installed it themselves. Way to go Parks!



County of Santa Cruz

DEPARTMENT OF PUBLIC WORKS PARKS, OPEN SPACE, AND CULTURAL SERVICES DIVISION

979 17TH AVENUE, SANTA CRUZ, CA 95062

(831) 454-7901 FAX: (831) 454-7940 TDD: (831) 454-7978

JOHN J. PRESLEIGH
INTERIM DIRECTOR

DATE: March 5, 2012
TO: Arts Commission, Parks & Recreation Commission
FROM: Gretchen Iliff, Facilities Management Division
RE: Status Report on Current Projects

Summary for reservations in the Parks for the month of February 2012 (excluding SFSC):

Attendance at Reserved Facilities:

February was typical for off season events with parties and a few weddings. Staff estimates that approximately 1,850 park visitors attended events in reserved facilities at County Parks in February.

Center and Meeting Room Rentals in February:

There were 4 weddings and receptions held at our various Park Centers and 35 meetings in February. Center and meeting room rental revenues totaled \$2,640. Valencia Hall continues to grow in popularity as it offers a lovely venue for a very reasonable rental rate. A new yoga class has begun at Highlands Park and is offered Tuesday and Thursday mornings and evenings.

Athletic Fields:

Baseball season is upon and most leagues have been able to start their use of the baseball fields in various parks earlier than the March 17th opening date. Soccer fields will open the 17th. Spring baseball and soccer programs have filled the schedules throughout County Parks' fields.

Garden Plots:

The opening of Felt Street Park included the opening of the new community garden plots, 17 plus 2 ADA in all. Due to previous years of gardening prior to park construction, up to 14 gardeners had the opportunity to renew their contracts. The remaining 4 plots (1 ADA), along with any plots released by previous year gardeners, will be filled through a lottery based on a waitlist. Jose Avenue garden plots contracts are also being renewed for the year and continues to be a very popular location. Gardeners are looking forward to planting in anticipation of spring.



County of Santa Cruz

DEPARTMENT OF PUBLIC WORKS PARKS, OPEN SPACE & CULTURAL SERVICES DIVISION

979 17TH AVENUE, SANTA CRUZ, CA 95062

(831) 454-7901 FAX: (831) 454-7940 TDD: (831) 454-7978

JOHN PRESLEIGH
INTERIM DIRECTOR

DATE: MARCH 5, 2012
TO: PARKS AND RECREATION COMMISSION, ARTS COMMISSION
FROM: BOB OLSON, PARK PLANNER
SUBJECT: PARK PLANNING DIVISION STATUS REPORT

BERT SCOTT ESTATE ROOF REPLACEMENT

Staff has sent out a Request for Qualifications to various consultants to prepare plans and specifications for removing and replacing the roof at the Bert Scott Estate. Responses are due back on Friday, March 9, 2012. The qualifications of each firm will be evaluated, with contract negotiations proceeding with the most qualified firm. It is the intent of staff to have the roof replacement project ready for bidding in May of this year.

FELT STREET PARK

The Contractor has completed all but a few punch list items generated by the preliminary final inspections. The park was opened for public use on January 11, 2012. The Grand Opening celebration took place on February 2, 2012. The park was filled to capacity for this event. Staff is currently working with the Contractor on the close-out documents for the project.

THE FARM PARK

Park Maintenance Staff has installed two disc golf practice baskets included in the Park Master Plan on the site to establish an interim use for the park site. Staff is also finalizing the contract with the State for a Proposition 84 Urban Greening Grant for riparian restoration and community Garden portions of the Farm Park. Additional funding will be required to construct limited support facilities for the community garden (parking, water system connections, etc).

FELTON COVERED BRIDGE ROOF RESTORATION

Parks staff, DPW Engineering and Caltrans are currently working on a modified scope of work to decrease the potential environmental impacts the project may have on the area adjacent to the Felton Covered Bridge. The project is currently in the Preliminary Environmental Study Stage. The results of the Preliminary Environmental Study will indicate if any special environmental documents will need to be prepared to proceed with the project.

MCGREGOR PARK SITE

Parks staff is awaiting the results on the Proposition 84 Urban Greening Grant Program Application. State Parks Grant staff indicated that the successful applicants will be notified in the spring of 2012. In the interim, Parks staff is developing a Request for Qualifications for the

selection of a design consultant to shepherd the project through the Development Permit, Master Site Plan Phase of the Project.

EAST CLIFF PARKWAY PROJECT

Construction is continuing on the East Cliff Parkway Project with the underground installed, Phase I and Phase III bike paths installed. Phase II road preparation work has begun along with minor concrete for trash enclosures, signage and other footings. The Pleasure Point Park Restroom is under construction with the underground, masonry and roof sheathing complete. The County Public Works Department is managing the project with assistance from Parks staff.

GROUND WATER RECHARGE PROJECT AT POLOGROUNDS

The groundwater recharge project has been completed for both area one and area two. To recap the scope of the project, area one (next to South Polo Drive) included a large rectangular shaped bioretention area and adjacent 20 vertical seepage pits. Area two (closest to the main parking lot) included the construction of a bioretention swale and 12 vertical seepage pits. The project was constructed by The Don Chapin Company with project management provided by County Environmental Heath Services and Parks staff. This the last update for this project.

PROPOSITION 40 UNALLOCATED FUNDING

In July 2011, the Parks Department received notification that the enacted State Budget provided additional time for Proposition 40 grant recipients to complete their projects under the Per Capita and RZH Block Contracts. To date, the Parks Department has utilized all but \$131,119 of the original grant amounts. Parks staff has submitted three new grant applications to the State. The projects include: additional picnic tables at Ben Lomond Park; new poured in place surfacing and tot structure at Willowbrook Park; and a new group picnic area and shelter at Pinto Lake Park. New Contracts with the State have been signed by the County. Parks staff will proceed with the projects as soon as copies of the fully executed contracts from the State are returned.

SIMPKINS FAMILY SWIM CENTER VARIABLE FREQUENCY DRIVE (VFD)

Parks staff is currently working with the Contractor and Design Engineer on the approval of construction submittals. There has been a delay in the submittal approval process due to insufficient data provided by the Contractor. It appears we are getting closer to a submittal package that the Design Engineer will approve. The project will include a variable frequency drive control system for the 50-meter pool recirculation pump and the recreation pool recirculation pump. Once installed, the VFD system will help off-set energy costs to operate the pool pumps.



County of Santa Cruz

PARKS, OPEN SPACE & CULTURAL SERVICES

979 17TH AVENUE, SANTA CRUZ, CA 95062

(831) 454-7901 FAX: (831) 454-7940 TDD: (831) 454-7978

JOHN PRESLEIGH
INTERIM DIRECTOR

DATE: March 5, 2012
TO: Arts Commission, Parks and Recreation Commission
FROM: Kathy DeWild, Program Coordinator
RE: Recreation and Cultural Services Division Status Report – March and April, 2012

AQUATIC PROGRAMS

Spring Schedule starts March 10, 2012 and runs through June 16, 2012

The spring pool schedule is as follows:

Lap Swimming - The lap pool is open Tuesdays and Thursdays from 6:00 a.m. to 7:30 p.m., Wednesdays and Fridays from 6:00 to 7:30 a.m. and 11:30 a.m. to 7:30 p.m. (closed 7:30-11:30 a.m.) Saturdays it is open from 9:00 a.m. to 3:00 p.m. It is closed on Sundays until April 15, 2012.

Warm-water Pool - The warm-water pool is available for general use on:

Tuesday and Thursday	6:00 a.m. - 5:00 p.m. (Shared w/swim lessons 10:30a.m.-12:30 p.m. & again open from 6:00-7:30 p.m.)
Wednesdays	6:00 a.m. - 7:30 a.m. 6:00 p.m. - 7:30 p.m.
Fridays	6:00 a.m. - 7:30 a.m. 3:00 p.m. - 7:30 p.m.
Saturday	9:00 a.m. - 10:30 p.m. (adults only) 10:30 a.m. - 12:30 p.m. (adults & kids 6 years and younger) 12:30 p.m. - 3:00 p.m. (all ages)

Recreation Swim – This includes the Warm Water Pool and the 1st lane of the 50M pool

Tuesday through Friday	3:00 p.m. - 5:00 p.m.
Saturday	12:30 p.m. - 3:00 p.m.

Pool Closures –February 24 and 25 was the last weekend of our currently scheduled pool closures.

Spring Swim Lessons - Swim lessons will be held through the winter months this year on Tuesday and Thursday mornings from 10:30 a.m.-12:30 p.m., and Tuesday, Wednesday, Thursday evenings from 5:00–7:00 p.m.

Adult Fitness Swimming - Adult Fitness Swimming is very popular at the Simpkins Family Swim Center. The best-attended workouts are Tuesday and Saturday mornings; up to 49 swimmers fill the 50-meter pool at these times. Fitness swimmers may choose from several different workout times: Tuesday-Thursday workouts are at 6:00 a.m., 12:00 p.m. and 6:00 p.m.; Friday workouts are offered at 6:00 a.m. and 12:00 p.m.; Saturday workouts are offered at 9:00 a.m.

Water Aerobics & Exercise - The water exercise classes this year have reached their highest capacity to date. Water exercise is an excellent way for people to meet their fitness goals without impact on the joints. Classes are designed to appeal to all levels of ability including, healthy, pre-natal, seniors, and rehabilitating or cross training fitness enthusiasts. A monthly calendar is available with dates, times and instructors names. Previous swimming or water-exercise experience is not required for participation in any of the water exercise classes.

Water Polo - Drop-in water polo is offered Saturdays from 10:30 a.m.-12:30 p.m. One must be a member of USAWPA to participate in the program.

Pool Rentals - The Santa Cruz County Aquatics and the Cabrillo Threshers swim teams continue to rent lanes in the 50-meter pool. The swim teams offer school-age competitive swimming programs Monday through Friday from 4:00 to 6:30 p.m.

Lifeguard Training Classes - Lifeguard Training Classes are currently being offered at the Simpkins Family Swim Center starting in January. Most classes will be held on Friday evenings and Saturdays; fees are \$264 for residents and \$290 for non-residents. Interested candidates can find more information on the parks website at www.scparks.com. All course materials are included in the course fees.

Private Pool Parties – Private Pool Parties are available on Saturdays starting March 10, 2012 and on both Saturdays and Sundays starting April 15, 2012. A variety of aspects of the facility may be rented for Private Pool Parties, from just the warm pool to aspects accommodating up to 110 people. Private Pool Parties are scheduled on weekends, spring, summer and fall, after the facility has closed to the public.

ARTS AND CULTURAL

The Arts Commission approved the Selection Panel’s recommendation of public artist for the Behavioral Health Unit public art project. The artist selected to continue in the process will present his proposal to the Board of Supervisors on March 6.

Gary Young has been named the 2012 Artist of the Year by the Santa Cruz County Arts Commission. Gary, a nationally-recognized poet, is the County’s 26th artist to be so honored. As a poet, printer, visual artist and educator, Gary has contributed extensively to the cultural life of Santa Cruz County. The high level of artistic production in Santa Cruz County is acknowledged through the Artist of the

Year Award. Recipients must live in Santa Cruz County and have a national and/or international reputation, as well as having contributed to the cultural enrichment of the local community. Gary will give a "Profile Performance" on Friday, May 25, 7:00 p.m. at the Museum of Art & History, 705 Front Street, Santa Cruz. The evening will celebrate the convergence of literary and visual arts. Enjoy a discussion and demonstration of poetry, typography and letter press printing. Admission is FREE to the public. Advance tickets are not available. Seating is limited and available on a first-come, first-served basis the night of the event.

Artists have been selected to exhibit their work at the County Government Center in 2012. Showing through the end of March are Laurie Longenecker, Sandra Cherk, David Fleming, Osobel George, and Maren Sinclair Hurn.

Ericka Perloff will be exhibiting landscapes done in pastel March through May, at the Simpkins Swim Center/Parks Offices.

QUAIL HOLLOW RANCH INTERPRETIVE PROGRAMS

Recent interpretive programs:

1. Paul Haskins was back for another of his Herp Walks on Sunday, February 5 from 1:00 -3:00 p.m. A whopping 30 people attended the reptile and amphibian survey.
2. A total of 24 weed enthusiasts attended the February 11 Broom Bash from 10:00 a.m. – 1:00 p.m. Volunteer, Chuck Baughman, led the work party.
3. On Sunday, February 19, Lee Summers led a group of 8 people on a History Hike from 1:00 – 3:00 p.m. learning about the history of California as it relates to Quail Hollow.
4. Linda Brodman from CNPS Habitat Restoration along with volunteer, Chuck Baughman, led 8 people up the Italian trail to pull French broom at the February 25 Broom Bash from 10:00 a.m. – 1:00 p.m.
5. A very inquisitive group of five birders joined Eric Feuss for his seasonal Beginning Birding program on Sunday, March 4 from 8:00 – 10:00 a.m.
6. Paul Haskins returned for another of his reptile and amphibian surveys entitled In Search of Herps on Sunday, March 04, from 1:00 – 3:00 p.m. Participants surveyed the Discovery loop and enjoyed handling the gopher and California king snakes that he brought from home.

A Dinosaur Birthday Party was offered by Lee Summers and Sasha Townsend on Saturday, February 4 from 1:00 – 3:30 p.m. A total of 21 kids and parents enjoyed the program. A Lost and Found Birthday Party took place on Saturday, February 25 from 2:00 – 4:00 p.m. A total of 15 kids along with 15 adults learned how to use a compass to create and follow an invisible trail to a birthday treasure. Lee Summers led the program.

Sarah Pierce, Jim Williams, Sasha Townsend, and Lee Summers all staffed an information booth about the birds of Quail Hollow at the Migration Festival at Natural Bridges State Beach on Saturday, February 11 from 11:00 a.m. – 4:00 p.m. A total of 415 people learned why some birds migrate while others do not at this fun-filled event.

Celebrating another successful year of volunteering, a Volunteer Valentine's Luncheon was scheduled on Sunday, February 12 from 11:00 a.m. – 1:00 p.m. A total of 19 volunteers attended the event and were awarded quail pins and hour pins for their time accumulated. Last year a total of over 3,700 hours were donated as volunteers worked on weekend interpretive programs, birthday parties, day camps, outreach events, resource binders, invasive plant removal, nest box monitoring,

garden maintenance, trail maintenance and development, advertising, visitor center hosting, etc. Since 2001 volunteers have donated a total well over 36,000 hours.

Lee Summers and Al Keuter met with Jodi McGraw at the request of Matt Johnston, from the County Planning office in order to review a proposed Sunset trail extension which would run along the east ridge of the park and then switchback down to the ranch complex. Jodi's assessment was needed to determine if June Beetles may be impacted as a result of the trail. Initial feedback is positive as long as horses are kept from utilizing the new trail. In addition, Conrad Jones from the Department of Fish and Game has been contacted for review, as portions of the trail switchbacks go onto department property.

Volunteer, Ken Moore, discovered an abandoned pot farm while monitoring French boom sites. Reporting his discovery to the office, staff along with volunteer, Al Keuter, inspected the site to plan for garbage removal. While inspecting the site, the group discovered a very large silver-leaved manzanita prompting Al Keuter to contact editors of the new *Jepson's Manual* to alter their description of this species to include this individual measured at 17 feet.

Eagle Scout, Nathan Wahler, completed his project at Quail Hollow recreating the second look-out vista along the Sunset trail. He cleared brush, removed poison oak, built and installed 2 picnic tables as well as a bench at the overlook. Now hikers have a place in the shade to picnic or rest on the way up the trail.

Upcoming interpretive programs:

1. Another work party to remove French broom from the park has been scheduled for Saturday, March 10 from 10:00 a.m. – 1:00 p.m. Linda Brodman and Chuck Baughman will lead the *Broom Bash*.
2. Lee Summers will lead children in a discovery of the wonderful world of chemistry in her *Mad Scientist Experiments* on Sunday, March 11 from 1:00 – 3:00 p.m.
3. Lucky park visitors will have a chance to observe many astronomical wonders through the amazing telescopes of the *Santa Cruz Astronomy Club* on Friday March 16 from 8:00 p.m. – 12:00 a.m. (weather permitting).
4. Master Gardener, Peter Quintana, will be back for a *Pruning Program* on the care and maintenance of trees and shrubs on Sunday, March 18 from 1:00 – 3:00 p.m.
5. Chuck Baughman will lead another of this month's *Broom Bashes* on Saturday, March 24 from 10:00 a.m. – 1:00 p.m.
6. Visitors will have a chance to learn about the wonderful world of knitting with Sarah Pierce at her *Knitting Basics* class on Sunday, March 25 from 1:00 – 3:00 p.m.
7. *A Trek to the Forbidden Sandhills* will be offered every Sunday throughout April from 10:00 a.m. – 12:30 p.m. Sean Warton will lead the hikes this year.
8. On Sunday, April 1, Paul Haskins will be out from 1:00 – 3:00 p.m. for another of his *In Search of Herps* programs as he combs the Discovery loop for reptiles and amphibians.
9. Yet another *Broom Bash* is scheduled for Saturday, April 7 from 10:00 a.m. – 1:00 p.m. with Chuck Baughman and Linda Brodman as we begin to wind down the broom season.
10. Thomas Whitman will return for his *Non-toxic Vertebrate Pest Control* program on Sunday, April 15 from 10:00 a.m. – 1:00 p.m. Participants will pay \$25 for a class all about the dos and don'ts of dealing with gophers, deer, and other garden pests.

11. Our final Broom Bash of the season will take place on Saturday, April 21, from 10:00 a.m. – 1:00 p.m. Chuck Baughman with Linda Brodman will lead volunteers to clean up the last remaining broom sites in the park in an effort to halt the blooming/seed production cycle.
12. Visitors wanting to learn about bats can come to Quail Hollow on Sunday, April 22 from 2:00 – 3:30 p.m. and join Monique Lee as she shares her abundant knowledge in her program: Bats: Gentle Masters of the Night. A fee of \$5 per person will be charged.
13. Renee Shepherd, from Renee's Garden, will visit Quail Hollow to offer a program entitled Great Gardens from Seed for Busy People on Sunday, April 29 from 1:00 – 3:00 p.m.

Jenny Anderson and all the Nest Box Checkers will kick off their bird box monitoring season on Saturday, March 10 from 10:00 a.m. – 1:30 p.m. as they review the process of data collection for Cornell University. Boxes were repaired and installed last January with a few changes from last year. Due to some marauding House Wrens who laid claim to numerous boxes and even killed other birds, efforts are being made to select for different species this year. The number of boxes will be reduced and many relocated out of House Wren habitat. Because of these challenges, we will not recruit new volunteers to this program this year.

Staff will be meeting with CCC representatives on Friday, March 9 at 11:00 a.m. to look at possible work to be done on the Discovery Loop. Winter rains of 2010-2011 caused much damage. Park maintenance completed basic repairs but removing water bars and ditching water flow will be needed for subsequent winters.

A Lost and Found Birthday Party will take place on Sunday, March 18 from 11:00 a.m. – 1:00 p.m. Lee Summers will lead the program as kids learn how to use a compass. A 9-year-old will be celebrating his birthday at Quail Hollow on Sunday, April 1 from 2:00 – 4:00 p.m. with a Running with the Wildcats party. Lee Summers will lead a maximum of 15 kids along trails playing a variety of predator – prey games.

Pacific Homeschool will visit the park for an Orienteering program on Friday, March 23 from 10:30a.m. – 12:00 p.m. Lee Summers will lead the program.

Phyllis Endicott will be back for a Spring Cooking Camp on Thursday and Friday, April 5 and 6 from 11:00 a.m. – 3:00 p.m. A maximum of 15 kids will learn all about fresh, home made foods, taking home a multi-course dinner for four by the end of the program.

This year's volunteer of the year award ceremony will be on Tuesday, April 17 at 10:00 a.m. in the Board of Supervisors chambers. The Quail Hollow nominee is Tim Jolly who has spent 6 years and over 400 hours working on broom removal, bird surveys, outreach programs, trail roving, research and most recently has been helping Al Keuter with Sunset trail maintenance and extension development.

Semprevirens Outdoor School staff will visit Quail Hollow for a staff-training about the sandhills on Friday, April 20 from 2:00 – 4:30 p.m. Lee Summers will lead the program. Permission to offer this program must be granted by the California Department of Fish and Game first as it is an additional hike into their sandhills property. Baring permission, the field trip will take place along park trails.

The SLV Homeschool will visit Quail Hollow on Friday April 27 from 10:00 a.m. – 12:00 p.m. in hopes of learning about the sandhills. Permission to offer this program must be granted by the

California Department of Fish and Game first as it is an additional hike into their sandhills property. Baring permission, the field trip will take place along park trails.

YOUTH PROGRAMS

Mar Vista ACE Program

February was a splendid winter month at Mar Vista ACE. The unusually warm weather allowed us to enjoy many fun and enriching outdoor adventures. We also watched the sweet pea plants bloom that were planted by the kids in the fall, with beautiful electric blue blossoms we thought we'd have to wait until spring to experience. The month began with Into the Future Week, featuring projects such as future tellers, space art, and astronaut pudding. We asked participants to tell us what they envisioned the future will be like and heard some very imaginative responses, such as talking food. During Inspire Your Heart with Art Week, participants made many great valentines to give to special people in their lives. One mother who received a necklace with a heart-shaped pendant made of marbled clay and stamped with a message from her daughter became emotional days later when she thanked staff and told us how many compliments she had been receiving about it. We also played many active games and the kids really enjoyed finding large puzzle pieces in a scavenger hunt and attempting to be the first team to assemble their heart puzzle. Participants enjoyed a field trip to the Aptos Museum, where they learned many things about the area's past. After leaving the museum, they savored a scoop of ice cream and ended the day with a visit to the Aptos Branch Library. We have a suggestion box that we encourage the kids to utilize to share their ideas about what they would like to see at the program and the idea that we have a panda-themed week at ACE was suggested on a number of occasions. Staff was hesitant about the idea because we thought it would be very challenging to tailor an entire week of activities to a panda theme. However, when we got started, we had a blast! We played games with the kids based on the characters in Kung Fu Panda, such as Be at Peace and Master Shifu Says, got the Belly Bumpers out for bumping face-offs and called it Panda-Monium, and played Bamboo Wars. For our themed cooking project, each child got a rice ball that they created a panda face with, using olive slices. They were very cute and a healthy snack! Next was Fun with Science Week, including a very special visit from Steve the Science Guy. Children experienced walking on eggs without them breaking, watching balloons withstand being pressed against a bed of nails, water not leaking from Ziploc bags when they poked pencils through both sides, antacid rockets, shake-and-take glow-in-the-dark slime, among other demonstrations. Other highlights of the week included experiments with phosphorescents under a black light, static electricity, water surface tension and building structures for an egg drop challenge that the kids thoroughly enjoyed.

March began with Dr. Seuss Week. Participants played games like Horton and a Who, Grinch Tag, Swedish fish toss, Dr. Seuss Nation, charades, and more. A variety of mediums were accessible for creation of fantasy creatures and children made their own cartoon flipbooks. We also made our own goldfish crackers using a whole-wheat cheese cracker recipe. We took a field trip to Aptos Pizza, where each child made a personal pizza and learned about the pizza-making process. During Reptiles and Amphibians Week, participants enjoyed a hands-on presentation by The Reptile Lady, who taught us about her snakes, bearded dragon, legless lizard, tortoise and turtle. Later, we played a game of Jeopardy to test the knowledge that they gained from the presentation as well as other facts learned throughout the week. We also played a tag game that demonstrated how and why

chameleons change colors. Next was Leaping Leprechauns week, featuring a potluck party among other festive activities. During Spring Into Spring week, we celebrated the beginning of what we hope to be a lovely season. We enjoyed a field trip to Pump'd Inflatable Fun Center in Watsonville, where participants had a fabulous time literally bouncing off the walls. Last was Monster Week, featuring a field trip to Ocean View Park. The kids had a fabulous time on the large slides!

April is always fun, as staff and participants alike enjoy the festivities of spring. Upcoming themes include Insects, Ocean and Transportation. Staff look forward to Spring Camp at Aptos Village Park during Spring Break.

Kinder Enrichment

February began with a celebration of International Week, during which the children discovered new places and customs. Next was Big Hearts Week -- the children made Valentine's gifts, had a red-and-pink themed potluck, and played lots of fun themed games. During Carnival Week we explored the kid-friendly version of wacky New Orleans traditions by implementing a funny hat day and making great masks. Lastly was Zoom, Zoom, Zoom (transportation) Week and we focused on different modes of travel. The kids had fun playing Red Light, Green Light!

For March we planned themes that encourage imagination. In our first week we learned more about bugs and butterflies. Some of the projects that participants really enjoyed were buggy bookmarks and coffee filter butterflies. During Shamrocks and Leprechauns Week we read about some fanciful myths and legends. We played a fun running game called Rainbow Tag and made great art projects like 3-D shamrocks, theme beading, and watercolor rainbows. Staff enhanced the playful atmosphere by playing Irish harp and pipe musical CDs. Next we welcomed the season of spring during Green and Growing Week. Participants learned how to make tissue paper flowers and planted grass seeds. We also enjoyed watching our favorite green friend, Kermit the Frog, in a clip from The Muppet Movie. The month ended with Spring has Sprung and Yuk It Up Weeks. During Yuk It Up Week humor and comedy abounded and the kids learned jokes for an open session at circle time. They had a blast!

We look forward to the month of April. Many projects and games featuring bunnies, chicks, and colored eggs are soon to come!

La Selva Beach ACE Program

February was a very festive month, beginning with Magic Week. Participants played parachute games and had a blast forming, sculpting, and popping bubbles. We also made gak (or slime), experimented with static electricity with tissue paper and water bending, and experienced the wonder of Wint-O-Green Lifesaver triboluminescence. During Happy Growing Hearts Week participants made and decorated heart-shaped sugar cookies, beaded hearts, and magnetic clay "love" bugs of several creative varieties. They also played games like Rainbow Tag, Trust Games, Bullseye, and more. Next was Carnival Week, the highlight of which was a field trip to Pump'D, an indoor inflatable fun center complete with huge inflatable slides, an obstacle course, bounce houses, and more. Participants also played games like Bingo, Bullseye, soccer, and enjoyed a variety of musical games. Last, but certainly not least, was Survivor Week, during which many island-themed activities took place such as Ultimate Team Challenge, Island Tag, Survivor Relay Races, Coconut Ball, Sea-Sand-Shore, tropical fish creations, rainforest butterflies, and a treasure hunt.

The month of March was magnificent and began with Dr. Seuss's Imagination Week, which featured highlights such as children's future self-portraits, creative roller coasters, a wax museum drama

game, tie-dye paper and oil pastel drawings, and predator & prey games. The following week's theme was Leaping Leprechauns and included activities such as clay clovers, a blarney stone craft, Giants & Leprechauns, a pony bead rainbow craft and bingo for prizes. We also took an exciting field trip to the Santa Cruz Beach Boardwalk for bowling & mini-golf. Another highlight of Leaping Leprechauns week was the St. Patrick's Day Potluck Party, during which we celebrated the start of Daylight Savings Time and the beginning of spring! Next was Sun, Glorious Sun Week which included highlights such as a cool color waves activity, rainbow tag, clay sun faces and an outdoor appreciation nature walk.

Staff look forward to an awesome month of April which will include many fun filled, exciting activities with themes such as Outdoor Appreciation, Sunny Bunnies and Tropical Oceans. We also look forward to field trips to Manresa Beach and to the Simpkins Swim Center. In the first full week of April, the Parks Department will be offering a daytime Spring Camp located at Aptos Village Park. Teens from local junior highs and high schools will volunteer and help staff to provide a safe, fun-filled program.



County of Santa Cruz

DEPARTMENT OF PUBLIC WORKS PARKS, OPEN SPACE, AND CULTURAL SERVICES DIVISION

979 17TH AVENUE, SANTA CRUZ, CA 95062

(831) 454-7901 FAX: (831) 454-7940 TDD: (831) 454-7978

JOHN J. PRESLEIGH
INTERIM DIRECTOR

March 13, 2012

SUBJECT: PROCESS TO ADD DISC GOLF AT ANNA JEAN CUMMINGS PARK

Members of the Parks and Recreation Commission:

As you will recall, a group of students and supporters for the installation of a disc golf course at Anna Jean Cummings Park addressed your Commission during Oral Communications at the November 14, 2011, and January 23, 2012, Commission meetings. As of the date of this letter, staff has not received a proposed course layout from this group. Commissioner Lang previously requested that staff return with a process for adding disc golf at the park. Additionally, staff has received a written request to post directional and informational signage along existing trails in the park (Attachment 1). The purpose of this report is to respond to Commissioner Lang's request to outline steps that may need to be taken to add recreational elements not included in the original master plan.

There is a long history of proposals, community input, environmental review, and permits related to the development of Anna Jean Cummings Park. It is not the intent of this report to document that long history but instead to share the process for review and approval of the original park improvements and outline a likely process for review and approval of new park features.

It is important to distinguish the process of developing a Park Master Plan from the permit review and approval process. The County Redevelopment Agency worked in conjunction with the Parks Department to prepare a Park Master Plan for the development of Anna Jean Cummings Park. In 1998, after a series of community meetings and a hearing before the Parks and Recreation Commission, the Board of Supervisors approved the Park Master Plan. The Anna Jean Cummings Park Recreational Master Plan is included as Attachment 2. That plan identifies areas to be developed for recreational uses, areas to be preserved as open space, and an area reserved for "future park uses."

Based upon that plan, proposed improvement plans and reports necessary for development permits and review under the California Environmental Quality Act (CEQA) were finalized. Those documents were submitted to the County Planning Department. Then in March 2000, after a public hearing, the Planning Commission approved a Master Plan Development Permit for the development of recreational uses at Anna Jean Cummings Park.

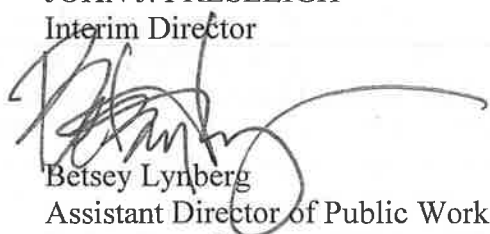
Typically the addition of new recreational uses at an existing County park includes consideration of a proposal or project at public meetings of the Parks and Recreation Commission and the Board of Supervisors. Then, once the project has been defined, a determination is made by the Planning Department as to the level of review required to amend existing permits. Parks staff has consulted with the Planning Director, who has responded that expanded use at the park would likely trigger the need to amend the Master Plan Development Permit. The level of review (administrative, Zoning Administrator, Planning Commission) would be determined by Planning Department staff after review of the specifics of the proposed expanded use. Any impacts of the proposed expanded use would also be evaluated per California Environmental Quality Act requirements. Depending upon the impacts of the specific elements of the proposal, if any, mitigation measures would be identified.

Yours truly,

JOHN J. PRESLEIGH

Interim Director

By:



Betsey Lynberg

Assistant Director of Public Works

Parks, Open Space and Cultural Services

BAL:mh

Attachments

Anna Jean Cummings Park Proposal:

1. Preservation of Open Space
2. Dedication and Enhancement of Existing Trails

Summary

The open space and trails at Anna Jean Cummings Park are highly popular with the immediate Soquel community and residents from throughout the county. Most of these trails existed prior to the establishment of the park in 2000. Trail use has increased exponentially over the years since then. It is the only public open space in Soquel and only one of a few areas in the mid-county where safe, natural trails are available and easily accessible. Both the moderate and the more challenging trails continue to be used by nature-lovers, dog-walkers, hikers, runners, athletic teams from sport clubs and the neighboring high school, and out-of-town visitors while enjoying local sports events.

See EXHIBIT A: AJC Trail Map

Goal #1: Preserve Open Space and Dedicate Existing Trails

The open space of Anna Jean Cummings Park has offered the community an historical and visual corridor, gracing the village since Soquel was established in the 1800's. In the years prior to becoming a park, the property was a dairy farm known as the O'Neill Ranch. After the dairy stopped operating almost 50 years ago, Soquel residents began using the property as a corridor from Soquel Highlands to the high school and village and as a place for running, walking and passive enjoyment of the open space.

Maintaining this open space and trail use was a priority during the extensive community planning process that resulted in the 1998 Parks Master Plan still in effect today. Dedication of the trails and open space would encourage good stewardship and would ensure that the existing open space be protected for passive recreational use for future generations.

Goal #2: Enhance Existing Trails

Visitors to Anna Jean Cummings Park are often confused about the boundaries of the open space areas of the park and unclear about where the trails lead. Informational maps, trail names and directional signage would help visitors orient themselves in the open space and assist them in planning their time there. Information would also protect the natural terrain. Some specific improvements might include:

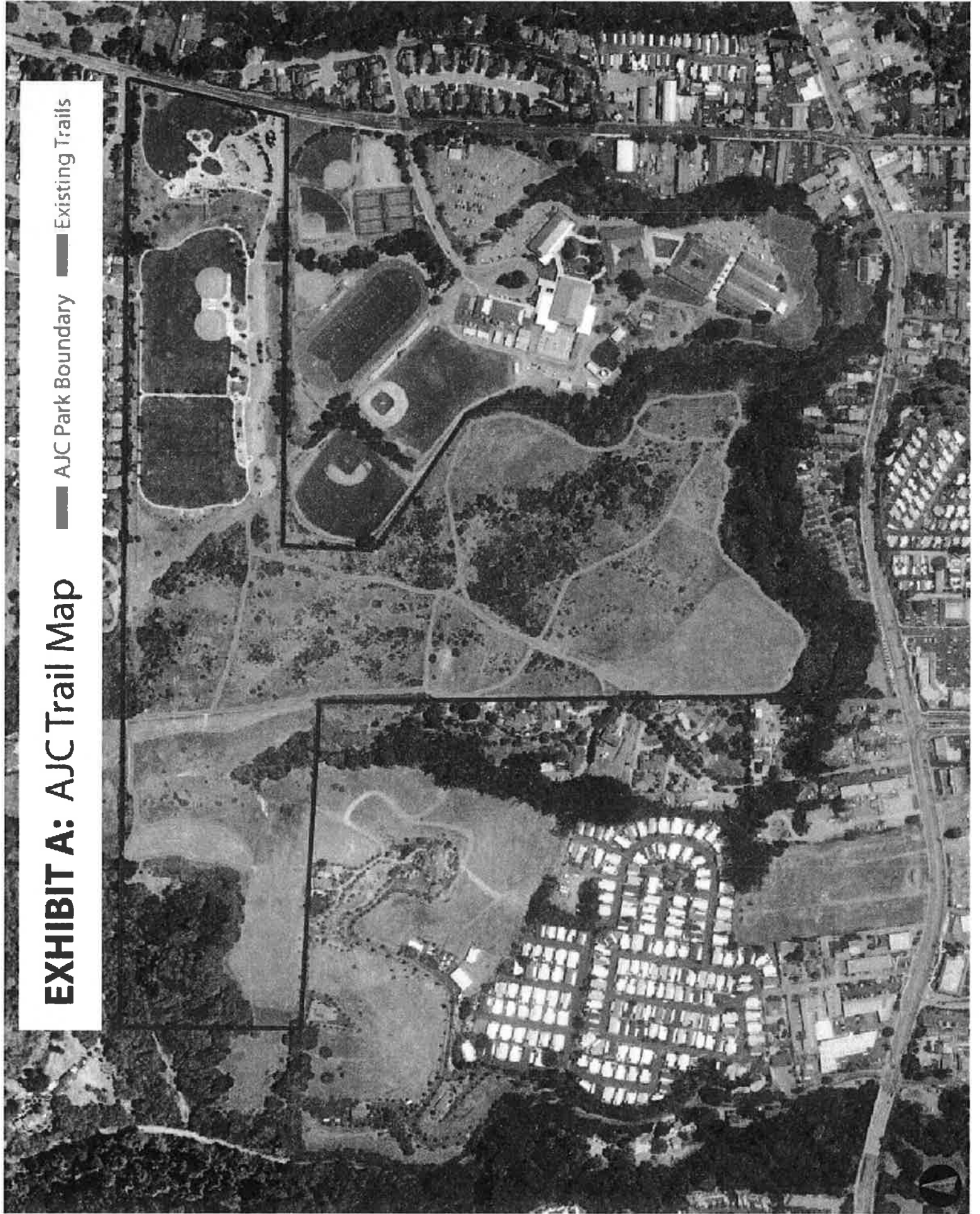
1. Informational and directional signs for trail users near the upper parking lot and at several key points along the trails. These might include a trail map, arrow signs, trail names and mileage markers.
2. Educational information highlighting the chronological history of the park and its ecological features such as geological, flora and fauna. This could possibly include the six known biotic habitats (seasonal wetland, mixed evergreen forest, non-native grassland, coyote scrub, chaparral, and mixed riparian forest.)
3. "Sensitive Habitat" or "Stay on Trail" signs located where terrain is especially vulnerable to users. This might include areas within a high water table, riparian corridor, or containing endangered plants, such as Gairdner's Yampah, Bunchgrass and Tar Plant.
4. Identification markers for common, rare and endangered species of animals, plants and insects identified in the 1995 E.I.R. which inhabit the Anna Jean Cummings Park open space. Such markers could be placed along trails to help familiarize visitors with the unique characteristics of the park and act as an educational opportunity and enhancement. This project could encourage participation by both local environmental and educational groups.
5. "Dog Etiquette Rules" and "Pack Your Trash" signs along the trail. The land and wildlife should be respected. Dog poop and trash left behind have negative visual and environmental impact. Additional biodegradable poop stations (as are commonly found in other parks) and trash receptacles would be helpful.

Respectfully Submitted by:

Friends of AJC Park

EXHIBIT A: AJC Trail Map

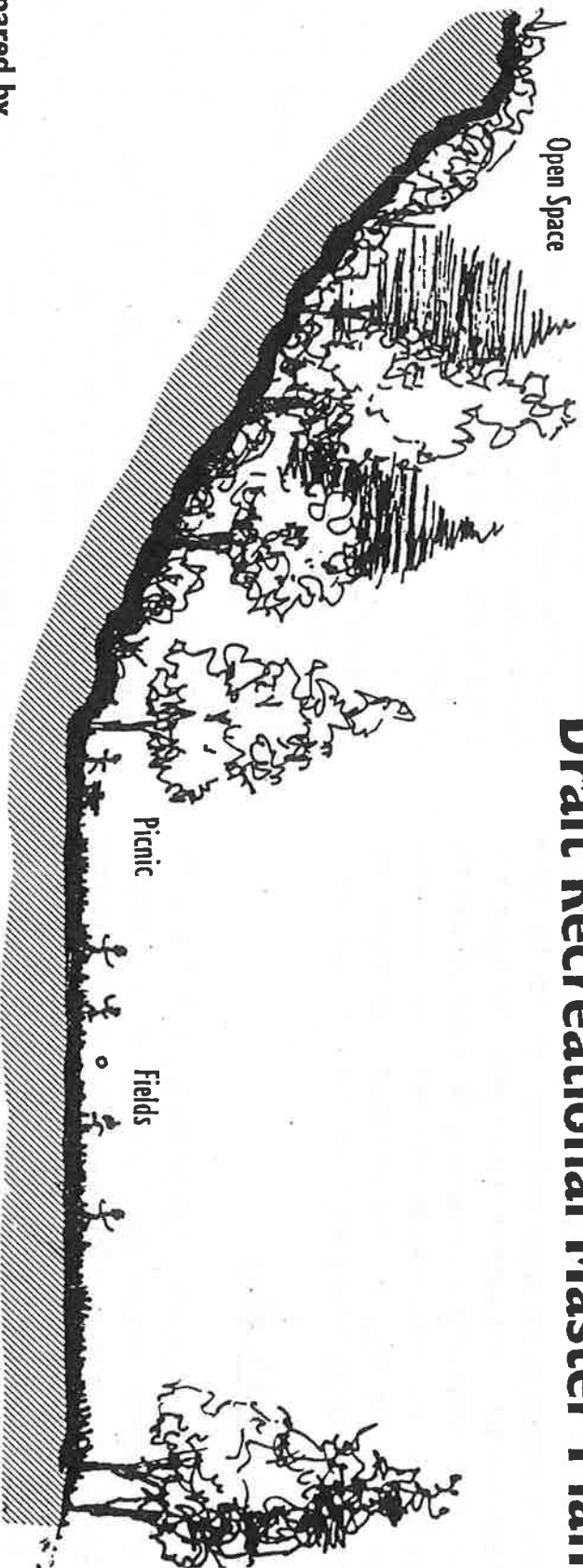
— AJC Park Boundary — Existing Trails



Anna Jean Cummings Park

County of Santa Cruz

Draft Recreational Master Plan



Prepared by
County of Santa Cruz Redevelopment Agency

May 1998

Introduction

The O'Neill Ranch property, now known as Anna Jean Cummings Park, was originally purchased by the Redevelopment Agency in 1989. Since that time, there has been an on-going dialog with the community about protection of the property and the design of the improvements. In 1996 the Board of Directors of the Redevelopment Agency approved an Environmental Impact Report as well as a Conceptual Plan for the property. With the approval of the concept plan attention was then focused on planning a portion of the property known as the upper and lower benches for active recreational uses. The purpose of this master plan report is to review the conceptual land use planning efforts that became the basis for the park master plan and to present the park master plan, setting the stage for the construction of major new recreational facilities serving Soquel and the mid-county area.

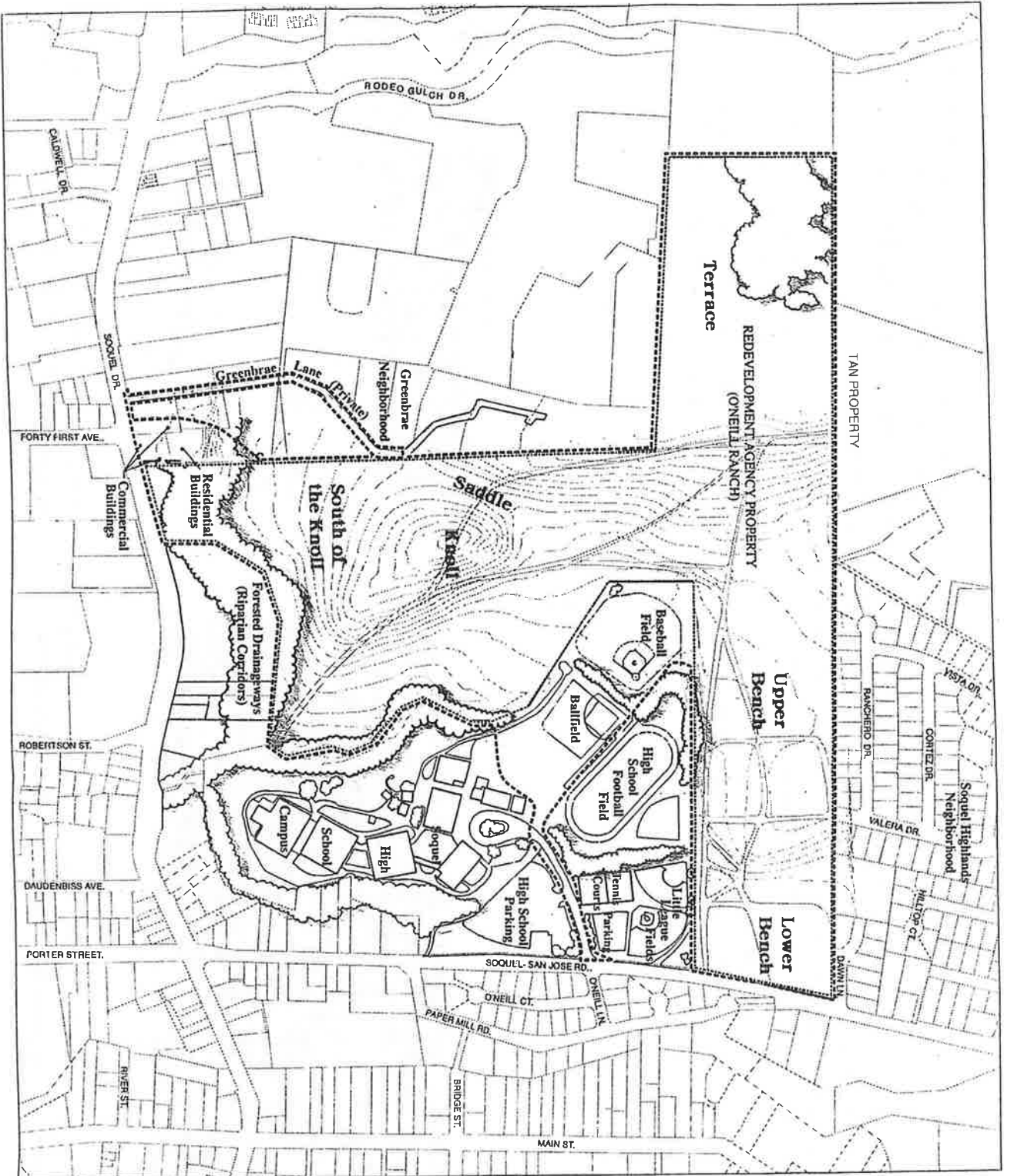
Background & Setting

The Anna Jean Cummings Park property is a 96.5 acre, "T" shaped property, located about one quarter mile north of Soquel Village (see figure 1 - Setting and Context). The property is vacant, and is characterized by a series of terraces, vegetated by grasses and shrubs. Riparian corridors with willow oak and eucalyptus trees, as well as riparian under story vegetation are in the southern, eastern and northeastern portions of the property.

Historically the property was used for grazing dairy cattle as a part of a large ranch which once also encompassed the Soquel Highlands neighborhood. There is no evidence that any structures were ever built on the site. For years the property has been used informally by hikers and enjoyed by the community as a visual reminder of Soquel's rural past.

The property includes more than 200 feet of frontage along Soquel-San Jose Road. An existing unpaved access from Soquel -San Jose Road travels along the property line with Soquel High School and provides access to the upper areas of the property. One private road (Greenbrae Lane) and several public roads (Valera Drive and Dawn Lane) parallel or dead-end at the property line. Many informal pathways are also found on the property.

The Anna Jean Cummings Park property has been designated for both community and neighborhood park use for a number of years. The property is adjacent to Soquel High School to the east and the currently undeveloped Tan property to the northwest. Residential uses surround the remainder of the property, with a larger lot, semi-rural neighborhood to the west (Greenbrae Lane), and suburban subdivisions to the north and northeast (Soquel Highlands, Dawn Lane and Paper Mill). To the south, a mobile home park borders the property across a broad riparian corridor. Various small businesses and vacant commercially zoned properties are located to the southwest of the property.



LEGEND

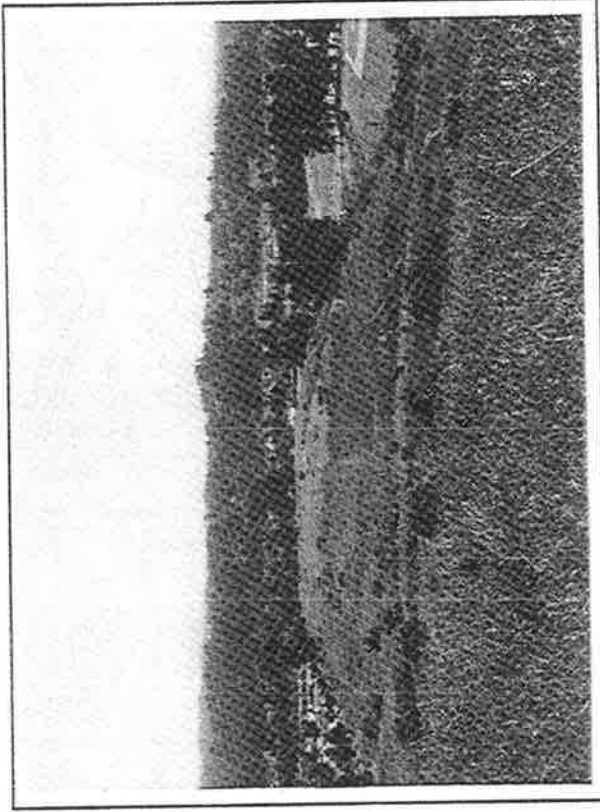
- Anna Jean Cummings Park Master Plan Boundary
- Redevelopment Agency Property Line
- Pedestrian Path
- ~~~~~ Existing Trees

**Anna Jean Cummings Park
Setting And Context**

Figure 1

Topography

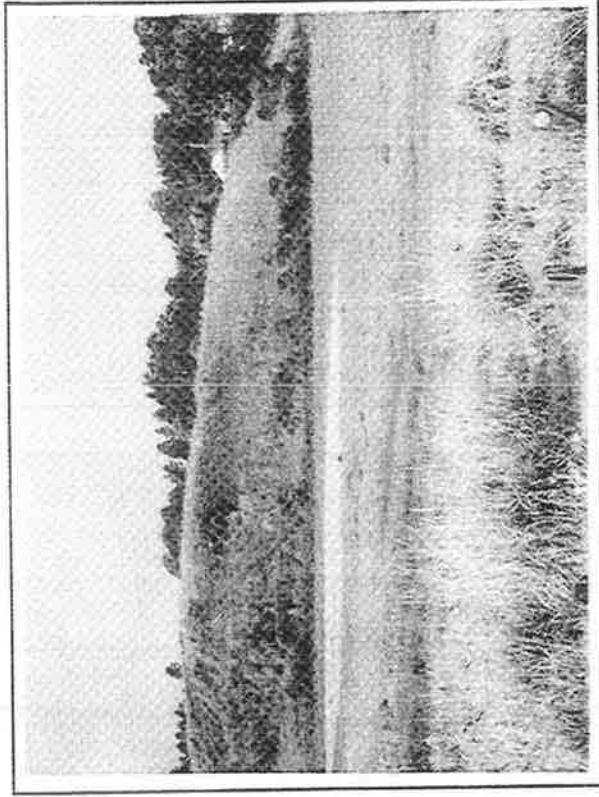
The site can be described by a series of topographic features, several of which are visible from some distance. A series of benches characterizes the northeast leg of the "T." The lower bench (immediately adjacent to Soquel-San Jose Road) is level, approximately 4 acres, and vegetated with scrub bushes and nonnative grasses. The lower bench is separated from the upper bench by a high, steep slope.



A view looking east from the upper slopes of the Anna Jean Cummings Park property, down across the upper bench.

The natural contours of the slope were altered by the placement of fill which was generated some time ago, possibly when Soquel High School or Soquel-San Jose Road were constructed.

The upper bench is a large, approximately 18 acre, nearly level area. Beyond a rolling hillside (created by an ancient, dormant landslide) is yet another terrace, the uppermost portion of the property. Portions of this series of terraces and slopes are visible from Soquel-San Jose Road.



A view looking west from Soquel-San Jose Road across the lower bench, where access to the park is proposed.

The northeast leg of the "T" is composed of a terrace that is geographically continuous with the Tan property to the north. This uppermost terrace is bisected by a gully which terminates to the west in a riparian corridor that drains into Rodeo Gulch. This terrace is the habitat for rare and endangered plant species: Santa Cruz tarplant and Gairdner's yampah.

The main vertical leg of the "T" is bound on the east by a riparian corridor characterized by willows. This riparian corridor separates the property from the Soquel High School campus. Dominating this area is the knoll, a conical, steep-sloped feature which is a remnant of an ancient stream terrace. Between the knoll and the slope to the west (extending to the Greenbrae neighborhood), is a saddle or low point. South of the knoll is a gently sloping area, which terminates in an incised riparian corridor, composed mainly of oak and eucalyptus trees with a few other riparian tree species. On the other side of the riparian corridor, there is a small vacant area fronting on Soquel Drive.

Conceptual Plan

Community Process

Over the years, as various proposals were considered for the Anna Jean Cummings Park property, a considerable amount of environmental information has been developed for the site. Although the property is large, there are a number of constraints which restrict the suitable areas for development. As a part of the community planning process for the property,

a constraints map was prepared based on the information from environmental documents¹, field reconnaissance, and other technical information (see figure 2 - Site Constraints). This map helped guide decisions made about the uses and areas of activity proposed for the site.

These site constraints included:

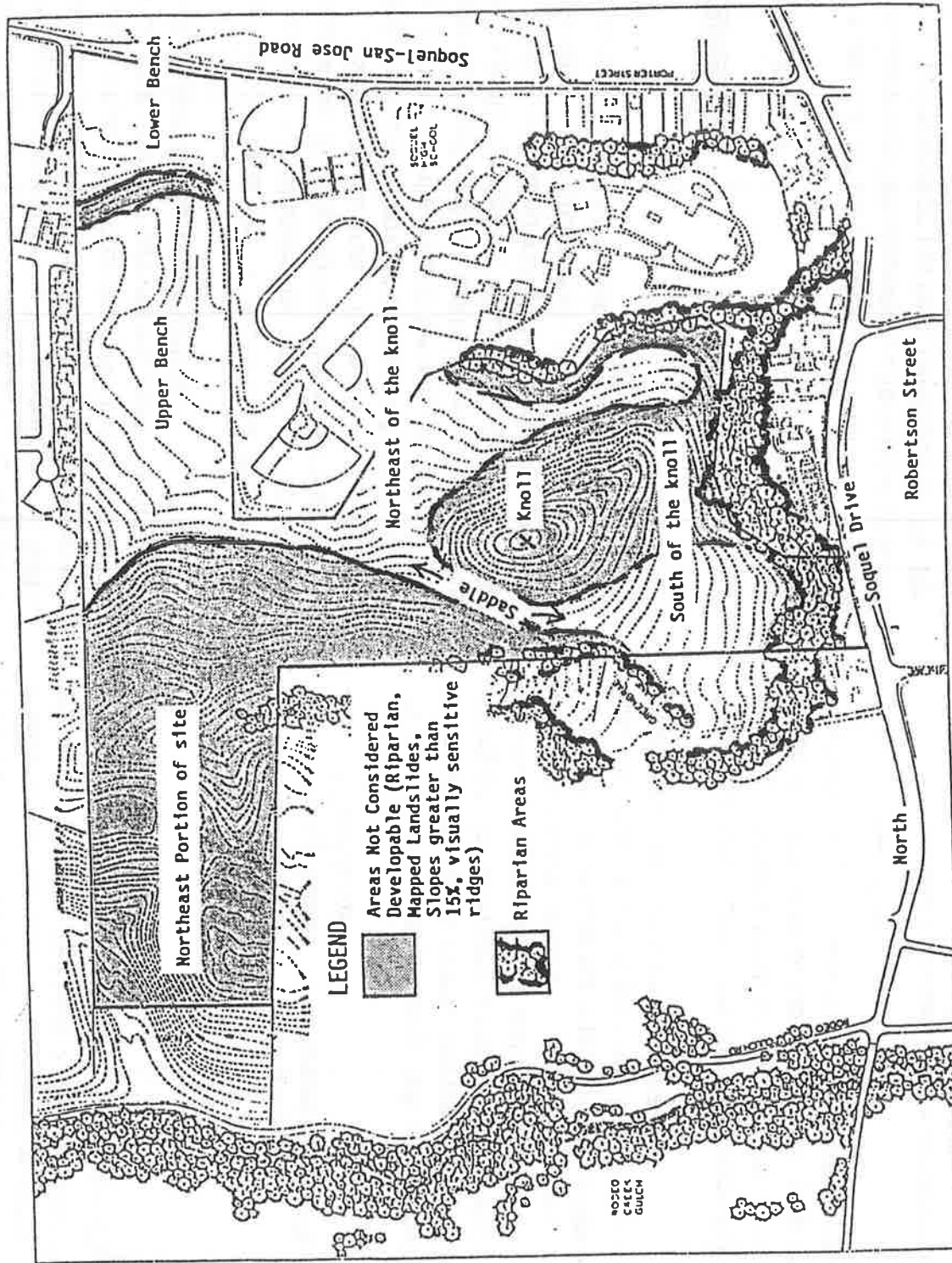
- * Riparian corridors
- * Steep Slopes
- * Geologic Hazards
- * Rare and Endangered Plant Habitats
- * Visually Sensitive Areas

Of the entire 96-acre property, only approximately 36 acres are suitable for development. The areas of the site identified as appropriate for development include the area south of the knoll, an area between the knoll and Soquel High School, and the upper and lower benches. Because the two benches are relatively level and are not in proximity to sensitive habitats or riparian areas, it was determined that they were the best location for park uses such as playing fields.

Based on these constraints and ideas from the community planning process, a series of land use plan alternatives were proposed and environmental analysis prepared². This information was ultimately used to reach community agreement

¹ Environmental documents include a 1979 EIR prepared by Jones and Stokes for a proposed residential development.

² O'Neill Ranch Master Plan Draft Environmental Impact Report, prepared by Michael Clayton & Associates July 1991



**Anna Jean Cummings Park
Site Constraints**

Figure 2

on a preferred land use plan for the purposes of further analysis. The preferred land use plan was analyzed in an Environmental Impact Report (EIR) prepared by Brady and Associates in August 1995. The EIR also looked at a number of alternatives to the project including development of the site entirely as a park.

After several public hearings and considerable community input, the Board of Directors of the Redevelopment Agency approved the O'Neill Ranch Conceptual Plan in August 1996 (see Figure 3- Conceptual Land Use Plan).

The Conceptual Land Use Plan

The conceptual land use plan sets aside areas of the property for active recreational use, open space, future park uses, and a small commercial/office use. These general activity areas provide locations on the site to accommodate a broad range of activities, consistent with the site recreational goals developed during community and neighborhood meetings and the overall goals for development of the property (see Figure 4 - Conceptual Plan Goals).

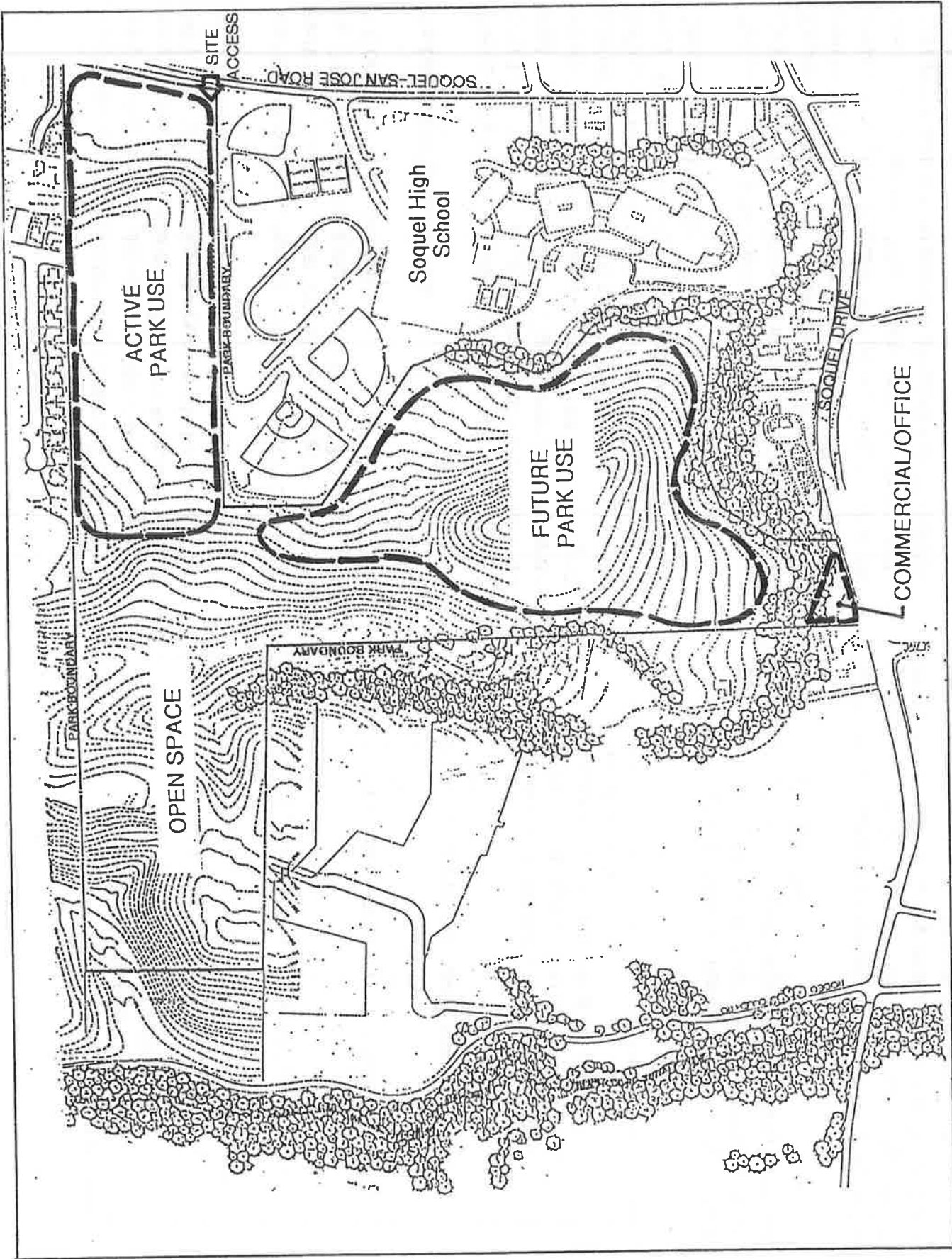
This plan clusters active recreational uses in the northeastern portion of the site, on the upper and lower benches adjacent to Soquel-San Jose Road. These uses include a wide range of community and neighborhood recreational activities including picnic areas, play structures and playing fields for adult and youth league sports. The master plan for these active recreational uses and site access is discussed in greater detail in the following section.

- Anna Jean Cummings Park
Conceptual Plan Goals*
- *Meet critical needs for active playing fields to serve the mid-county area*
 - *Provide for community and neighborhood park needs*
 - *Preserve open space and protect plant and animal habitats*
 - *Retain the beauty and natural character of the property*
 - *Locate access and active recreational uses to minimize grading and site disturbance as well as to respond to the concerns of adjacent neighborhoods*

Figure 4

The upper terrace area is reserved for hiking, nature appreciation and other passive recreation activities. Habitat preservation of the Santa Cruz tarplant and Gairdner's yampah will also occur in this area.

Additional park uses, to be defined at a future time, would be located south of the knoll, and between Soquel High School and the knoll. The remaining steeper portions of the property and riparian areas would be retained as open space.



Anna Jean Cummings Park
 Conceptual Land Use Plan

Figure 3

Every effort was made to locate the site access and active playing fields away from riparian corridors, steep slopes and rare and endangered plant habitats (see Appendix 1 - Tar Plant Mitigation). The proposed locations of the most intensive activity have also been planned to minimize site disturbance and grading. In addition, through the community planning process, the concerns of adjacent neighborhoods and members of the community have been incorporated into the plan.

***Anna Jean Cummings Park
Recreation Elements***

- *Playing Fields for Youth and Adults*
- *Community and Family Picnic Areas*
- *Hiking and Jogging Trails*
- *Open Space and Habitat Management*
- *Access and Parking Close to Playing Fields and Picnic Areas*
- *Community Funding Partnership*
- *Potential future Expansion of Park Uses*
- *Possible Cooperative Use of Facilities with Soquel High School*

Park Master Plan

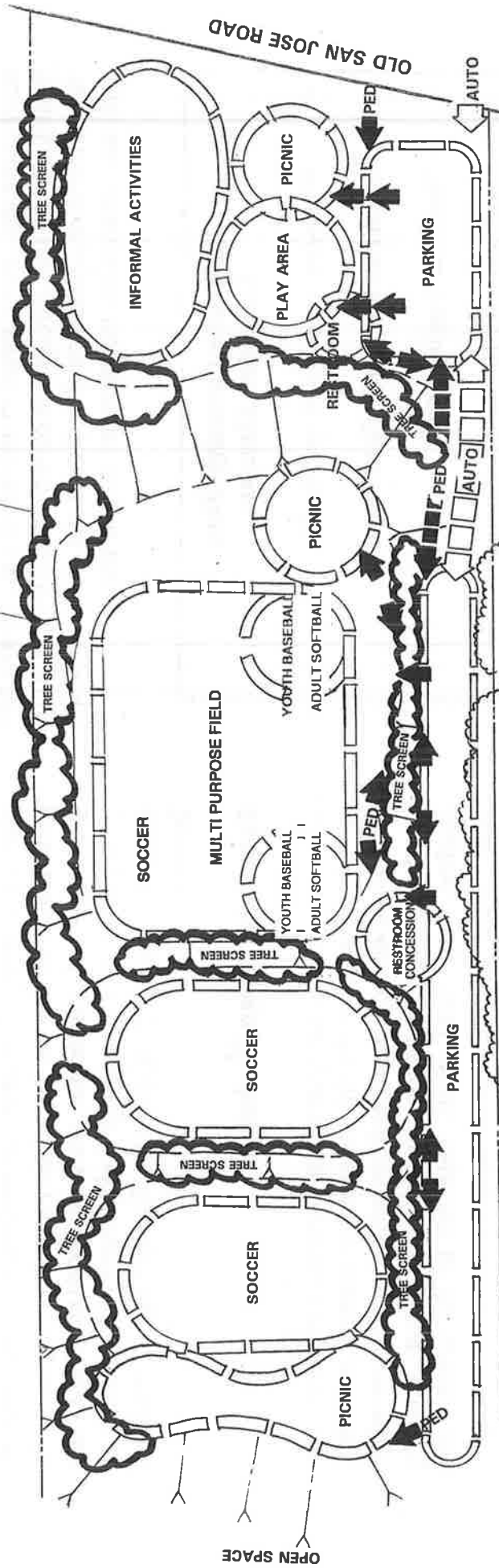
A critical community need for the expansion of active playing fields to serve the mid-county area was identified during the planning process. The need for neighborhood and regional park facilities serving the Soquel area was also recognized. As a result the park master plan envisions broad community use of the Anna Jean Cummings Park property in a variety of activities (see figure 5- Conceptual Plan for Upper and Lower Benches).

Community Design Workshops

A number of community and neighborhood design concerns were identified from the EIR and previous planning processes. Several of these concerns specifically related to how the design of the active recreation facilities affects the adjoining neighborhood, while others were tied to the function and design of the park uses that will serve the entire community.

In the spring of 1997, community design workshops were held with representatives of organized sports leagues in mid-county and members of the community to develop a plan for active recreation on the upper and lower benches. These series of meetings focused on design solutions to address the issues and concerns relating to the proposed park, and concluded with a presentation of a Preliminary Master Plan for Anna Jean Cummings Park, which with minor modifications to field layout and landscape buffers received general community support.

RESIDENTIAL



Conceptual Plan

ANNA JEAN CUMMINGS PARK
 Upper & Lower Benches
 County of Santa Cruz



SOQUEL HIGH SCHOOL

Figure 5

The area on the upper and lower benches proposed for active recreation is approximately 25 acres and is designed to blend with the natural topographic features of the site. The general features of the plan are described below followed by more detailed descriptions of actual facilities (see Figure 6- Preliminary Master Plan).

Access and Parking

Access to the site is planned from Soquel-San Jose Road at the location of an existing, unpaved driveway parallel to the southern property boundary with Soquel High School. This access has been chosen because it is the most cost effective, creates the least environmental impacts and provides direct access to the areas of most intensive activity. Because parking is proposed both on the lower bench and on the northern side of an access road on the upper bench (between the road and the playing fields), this design concept also addresses a major neighborhood concern about park users parking on residential streets. The access road would terminate in a turnaround at the base of the slope leading to the open space and regional park area. In addition to the parking along the northern edge of the access road, an area on the upper bench has been reserved for future parking, if needed

Recreational Uses

The main entrance to the park will be located on the lower bench. The master plan calls for "neighborhood" park uses, a picnic area, children's play area, restrooms and informal turf on

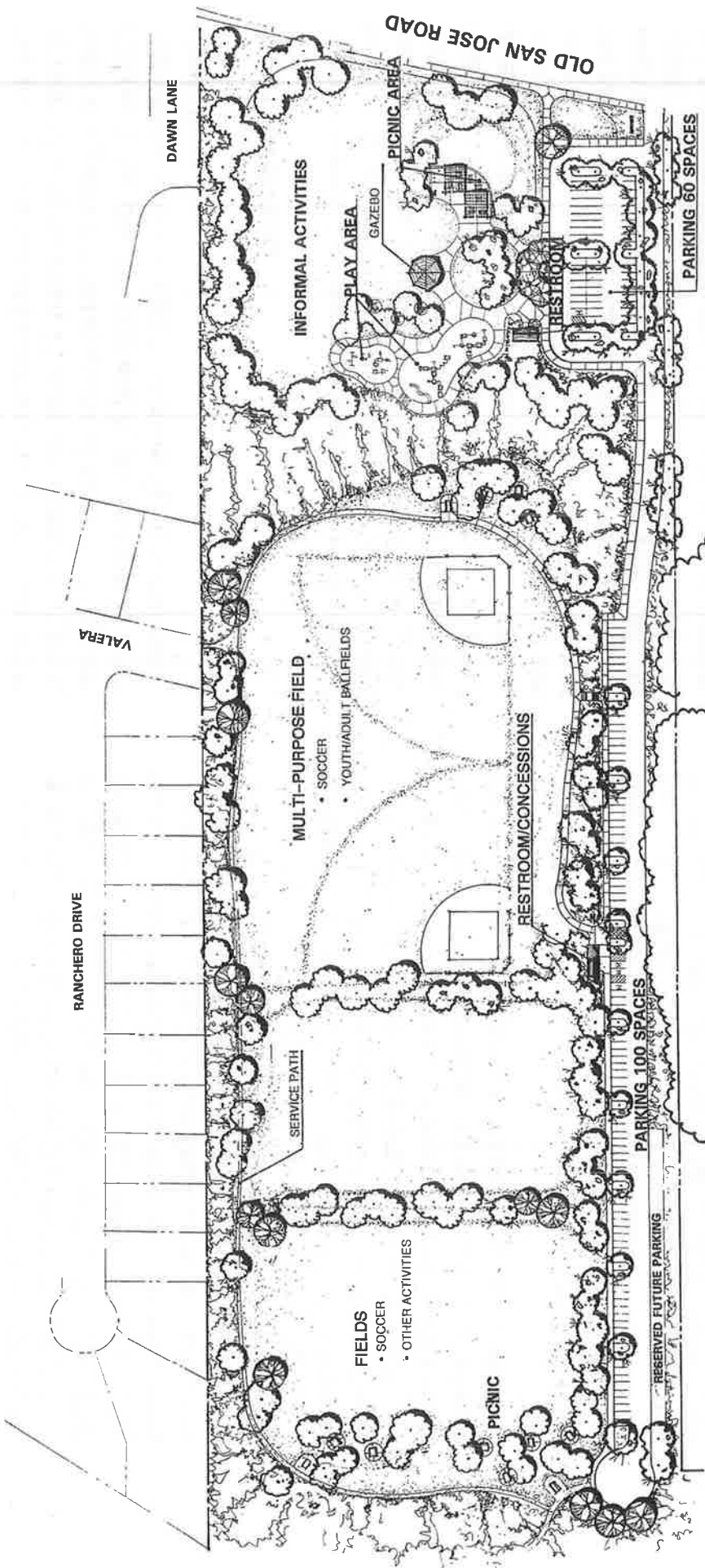
the lower bench as suggested by the community. Parking will be provided to accommodate use of these facilities and provide for spillover parking from the upper bench uses. As a part of development of park uses sidewalks will be constructed along the Soquel San-Jose Road property frontage. No formal access to the park will be provided from Dawn Lane. Both the access road and a pedestrian pathway will lead up to the upper bench, where the most active recreational uses will be located. These uses include two soccer fields, a multipurpose field, and additional informal picnic areas. The intention is to design the fields so that they can be reconfigured as necessary to allow for use by varied age groups and sports organizations. In order to minimize grading, the fields will be constructed in three levels. Restrooms with a concession area will be provided between the two field levels, adjacent to the parking lot and walkways.

As opportunities arise, cooperative use of park and Soquel High School athletic facilities will be explored. Future expansion of park areas and activities will occur as funds are available and community interest grows. In the interim, the area designated for future park use will continue to be used informally for passive recreation.

Highlights of the Preliminary Master Plan include:

Upper Bench

- Parking Lot - is located in close proximity to the active recreation, space for 100 cars is shown on the upper



Preliminary Master Plan
ANNA JEAN CUMMINGS PARK
 Upper and Lower Benches
 County of Santa Cruz

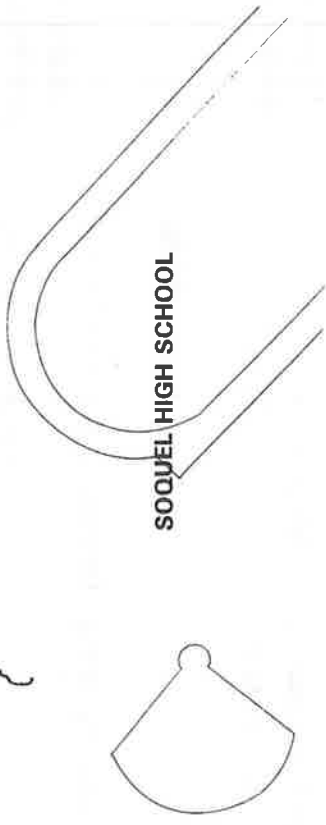


Figure 6

bench with an additional area set aside which could increase the lot size to 140 spaces in the future. This amount of parking will discourage the use of residential street parking in the surrounding neighborhoods. The parking lot will have signage to inform high school students of restricted to park use parking only and will be landscaped.

- Fields for Active Recreation - the upper bench will be regraded to create 3 terraces to accommodate 2 soccer fields and a large multi-purpose field. The multi-purpose field will incorporate 2 youth/adult ball fields or soccer play in a variety of arrangements. This plan will help the community meet the needs for active recreation in the mid-county area.

- Picnic Areas - informal picnic opportunities will be available at individual locations in the upper bench area of the park intended for more private gatherings or a small party after a game. These locations will have a table and possibly a barbecue set upon a concrete pad (away from open space) located in the open sun or sometimes near a shade tree.



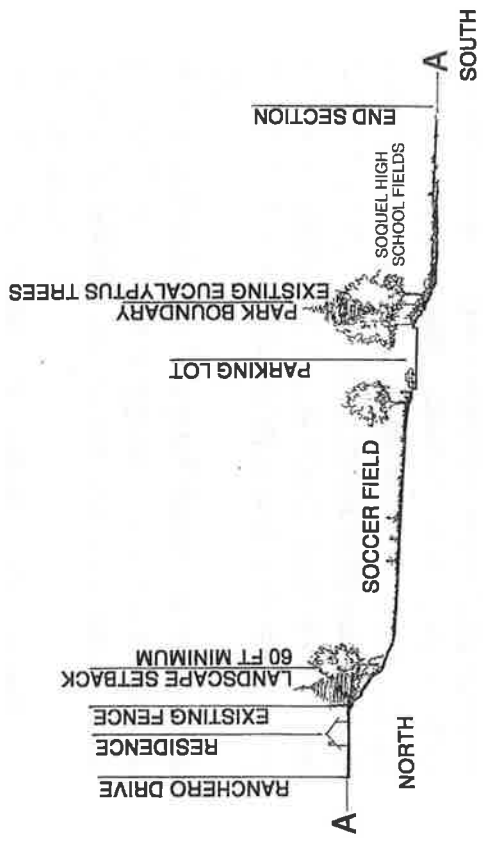
- Restroom/Concession Building - will be conveniently located next to parking and the fields for active recreation. The prefabricated structure will be designed to not only accommodate restrooms, but also storage and concessions as suggested by organized teams. The

building will meet all codes and accessibility requirements.

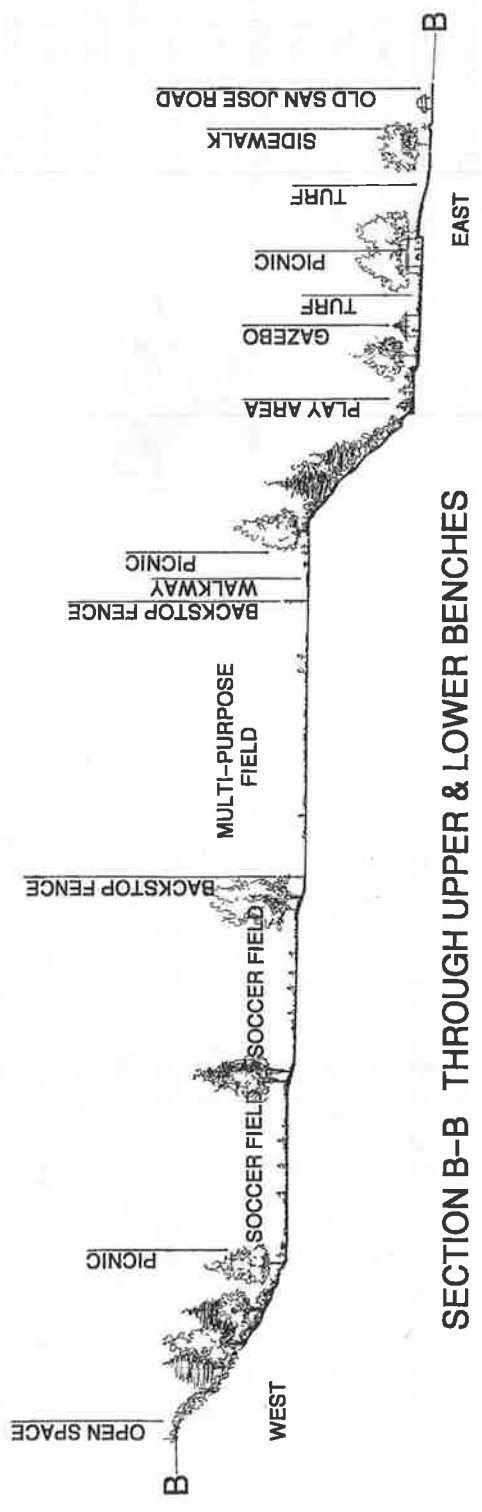
- Pedestrian Access - will be possible from Valera Drive, Old San Jose Road, and different points along the High School property line providing greater access to the park.

- Landscaping - will consist of mixed species of trees located to shade and define activity areas such as field spaces and picnic areas and to buffer residential property lines. Landscaping will be designed to blend into the native hillside areas beyond the formal park improvements. The understory will consist of native material mixed with drought tolerant perennials for water conservation and selected with consideration of fire resistance, erosion control, and low maintenance requirements. Open turf areas will be suitable for a variety of active recreational uses.

- Setback Buffer - included in the development of the park is a requirement for a buffer to mitigate noise and restrict encroachment of active park uses for residences adjacent to the park along Rancho and Valera Drives. A substantial landscaped setback will slope down from the property line to the field areas and will be planted with a variety of trees and shrubs. (see Figure 7 - Section Drawings). Existing fencing will be left in place. If after the park has been constructed and is in use, residents desire additional noise mitigation, the Redevelopment Agency will construct a new 6 foot high solid board fence.



SECTION A-A ACROSS THE UPPER BENCH



SECTION B-B THROUGH UPPER & LOWER BENCHES

PRELIMINARY MASTER PLAN

ANNA JEAN CUMMINGS PARK
UPPER & LOWER BENCHES

Figure 7

Lower Bench

- Parking Lot - located off Soquel-San Jose Road, will provide vehicle access to the park site. Spaces for 60 cars are located on the lower bench where picnicking and play areas are located. The lot will be landscaped.
- Picnic Area - the picnic area located on the lower bench, near the play area and will consist of a groups of tables, barbecues, trash receptacles under a shade structure surrounded by a tree canopy.
- Play Areas - on the lower bench, a large free form play area is planned which will house a multiple of play structures and swings for various age groups and will be surrounded by bench seating for careful watch by parents. The play area will meet all safety and accessibility guidelines.
- Gazebo - located off the walkway near the picnic area will provide a focal point for the lower bench and be used for presentations, informal performances, displays, or other recreation programs.
- Restroom/Maintenance Building - this small scale prefabricated structure is tucked up at the base of the slope, yet is conveniently located to serve the play area and group picnic area. This building area will also include space for equipment and supplies related to maintenance of this park facility. Maintenance areas will be appropriately screened from public views.
- Landscaping - will consist of shade trees mixed with occasional flowering accent trees grouped in locations to shade and distinguish activity areas such as; picnic areas,

- the play area, or the edges of turf areas where someone might relax away from other park activities. The understory will consist of native material mixed with drought tolerant perennials for water conservation and selected with consideration of fire resistance, erosion control, and low maintenance requirements. Open turf areas suitable for all types of informal park activities will cover the rest of this portion of the park.
- Informal Activities - the park improvements on the lower bench offer opportunities for formal and informal recreation.
 - Safety and Visibility - the layout of the park elements has been done with safety and visibility as a key requirement. The arrangement of these elements in the vicinity of the parking area allows the sheriff and other security personnel direct visibility of the restroom, play area, picnic areas, soccer and baseball fields, from the patrol vehicles. The parking lot entrance will be secured with a gate during nighttime hours.
 - Public Art - a public art component will be included in the development of the park. Two percent of the construction cost is budgeted to cover the cost of the artist fees and art component.

Anna Jean Cummings Memorial

Anna Jean Cummings, the original executive director for the Land Trust of Santa Cruz County, was instrumental in bringing community focus to the O'Neill Ranch property eventually leading to the purchase of the property by the Santa Cruz

County Redevelopment Agency. The Land Trust of Santa Cruz County has established a memorial fund in Anna Jean's name with the intention of constructing a tribute to her on the park property. The Land Trust will work with the Redevelopment Agency and the Parks Department to determine an appropriate setting and theme for this memorial.

Preliminary Cost Estimates

Park Development Costs

A preliminary cost estimate for the design and construction of improvements described in this plan is \$2,200,000. This estimate includes all costs associated with the design and development of the park improvements including utilities, grading and drainage, parking lots, restroom and concession buildings, all walkways, picnic areas, play equipment, a gazebo, irrigation, turf areas, landscaping and a public art project. However, only \$2,100,000 in funds have been identified for this project in the Redevelopment Agency's Capital Improvement Project Budget leaving a budget shortfall of \$100,000. In the past, organized sports leagues have expressed interest in possibly contributing to the park development to bridge any funding gaps. The budget shortfall may thus be addressed by a cooperative venture with organized sports leagues.

Park Maintenance Costs

While the development of the upper and lower benches at

Anna Jean Cummings Park will be funded by the Redevelopment Agency, state law prohibits Redevelopment Agency's from funding on-going maintenance and operations costs. Thus once the park improvements have been completed, the County Parks Department will assume maintenance and operations responsibilities.

Park maintenance cost are based on personnel costs, the cost of supplies and materials, and utility costs. The maintenance costs indicated in this report are based on existing County Park Department standards which represent a medium to high quality level of maintenance. This level of maintenance insures protection of the initial development investment as well as providing useable, well maintained facilities for the park user.

Based on existing maintenance practices within the County Parks Department, one Park Maintenance Worker is responsible for 7.3 acres of developed parkland. This figure includes supervision and specialist classifications currently used for equipment operation and repair. Material/supply costs are based on current expenditures within the County Parks Department.

Using these standards the estimated annual cost of maintaining the proposed park improvements is \$221,000 in 1998 dollars. It should also be noted that there is the opportunity for this facility to generate revenues from the use of park facilities to offset part of these maintenance and operation costs. Funding for operations and maintenance of Anna Jean Cummings Park is not currently allocated in the Parks Department Budget and will

need to be approved by the Board of Supervisors as part of the department's annual budget process.

Plan Adoption and Implementation

Plan Adoption

This Preliminary Park Master Plan must be reviewed and approved by the Parks and Recreation Commission. Then the plan will be forwarded to the Board of Supervisors for review and adoption before the Redevelopment Agency can proceed with the next steps towards implementing this plan. Public hearings will be scheduled by both the Parks and Recreation Commission and the Board of Supervisors.

Implementation

Once the park master plan has been adopted the Redevelopment Agency can proceed with the following:

- Public Art Process - which includes formation of a selection committee, development of conceptual ideas, artist selection, and public art project approval by the Art Commission and the Board of Supervisors.
- Tar Plant Management Plan- will be developed and implemented to address the management and protection of this endangered species.
- Development Permit- submitted to the Planning

Department includes review of preliminary grading and drainage plans as well as other preliminary site development plans by county departments and other agencies.

- Detailed Design- once the Development Permit is approved, detailed drawings will be generated clarifying all aspects of the design and the details necessary to construct the improvements. Cost estimates will be fine tuned.

- Construction Documents and Specifications- these documents are the nuts and bolts needed to hire a Contractor to develop the park. From the detailed drawings this set of documents will be used to bid the project.

- Bidding and Construction- once bids have been received and reviewed by the Redevelopment Agency, a recommendation will go to the Board of Supervisors for an Award of Contract, and then actual construction will begin. At this time that date is anticipated by the Spring of 2000.



Appendix I

Tar Plant Mitigation

A Santa Cruz tarplant management plan will be prepared by a qualified botanist and implemented. The plan will identify areas where tarplant growth is likely, and management methods to encourage tarplant growth in these areas. Tarplant grows in moisture retaining soils where competing grasses are short due to grazing, mowing, or fire. Plan preparation is to include research on the site slope and soil conditions conducive to tarplant growth, and pilot management program (such as mowing) of some of the areas. A 5 year monitoring program and management will be set up and adjusted per habitat changes. These actions are also expected to benefit the growth of the Gairdner's yampah.

A 10 foot buffer zone will be established around existing populations of Santa Cruz tarplant and Gairdner's yampah in the northwestern part of the site. These buffer zones will be protected from human intrusion by low fences and "Do Not Enter" signs.

Acknowledgments

Santa Cruz County Redevelopment Agency Board of Directors and Santa Cruz County Board of Supervisors

Jan Beautz	First District
Walter J. Symons	Second District
Mardi Wormhoudt	Third District
Ray Belgard	Fourth District
Jeff Almquist	Fifth District

Santa Cruz County Redevelopment Agency

Susan A. Mauriello	Executive Director
Tom Burns	Agency Administrator
Sue Gilchrist	Project Coordinator
Betsey Lynberg	Urban Designer
Gary Carlson	Park Planner

Santa Cruz County Department of Parks, Open Space and Cultural Services

Barry Samuel	Director
Dave Mitchell	Park Planning and Development Manager
Gretchen Illiff	Facilities and Maintenance Manager
Clark Beattie	Recreation and Cultural Services Manager

Melissa Henderson

From: Dwight Smith [AMoodMan@Cruzio.com]
Sent: Thursday, February 02, 2012 12:48 PM
To: PRCWeb
Subject: Proposed sports facilities at Anna Jean Cummings Park.

Dear Commissioner Rosenberg,

I noticed that page 8 of the Parks and Recreation Commission Agenda for January 23, 2012, is a letter from John Presleigh. In that letter Mr. Presleigh notes that the proponents of a disk golf course at Anna Jean Cummings Park "held a community meeting on January 19, 2012." That meeting never occurred. Here is the text of an email Luke Dahlens sent to the Soquel Neighbor's Alliance (emphasis mine):

Hi all,

I apologize, I know I said final email but I realized that we still need to keep you all in the loop about meetings and such.

As a result of recent events and the fact that our fall finals is beginning to consume all of us here at the high school, we have chosen to postpone our presentation of our proposal for a disc golf course at AJC that was scheduled for next Thursday January 19th @ 6:30 pm at the high school. We want to make sure that our proposal is sound and that the club feels comfortable and ready to present in front of the local community (aka...a big group of people :) We will re-post the new presentation date once it is determined.

Thank you for your understanding,
 The Soquel High Disc Golf Club

To date the club has not re-scheduled their community meeting.

Sincerely,
 Dwight Smith
 2605 Warwick Lane
 Santa Cruz, CA 95065-2009
 831.462.2172

- [Commercial Portfolio](#)



*Georgina Joy Mekeel Monahan
2324 Melanie Place
Santa Cruz, California 95062*

Michael Rosenberg
Santa Cruz Parks and Recreation Commission
979 17th Ave., Santa Cruz, CA 95062
February 14, 2012

Re: Off Leash Dog Hours

Dear Commissioner Rosenberg,

Please find enclosed a copy of the letter I wrote to Supervisor John Leopold thanking him for enforcing the leash law and urging him to resist the request from dog owners for off leash hours.

I hope that you will consider my ideas and opinion when you make your recommendation on off leash hours to the Santa Cruz Board of Supervisors.

Sincerely,


Georgina Monahan

*Georgina Joy Mekeel Monahan
2324 Melanie Place
Santa Cruz, California 95062*

Supervisor John Leopold
Santa Cruz County Board of Supervisors
701 Ocean Street, Santa Cruz, CA

February 7, 2012

Re: Off Leash Hours On Live Oak Beaches

Dear Supervisor Leopold,

I am writing to thank you for enforcing the county leash law. Unleashed dogs on Live Oak beaches have long been a problem. I have copies of letters I wrote to former Supervisor Jan Beautz that date back to 2000 asking for enforcement. The number of dogs running loose on the beach has increased exponentially over the past twelve years. Evidently word has spread around the county that there has been no enforcement on Live Oak beaches. I observe vehicles arriving and discharging dogs. I found a flyer for a rental property here advertising "dog friendly" beach. Dogs are now the dominating presence on the beach. The shorebirds are gone and children cannot play in safety. Walking on the beach is not tranquil. Playing a game of ball or frisbee is risky. The beach is no longer clean enough to contemplate picnicking.

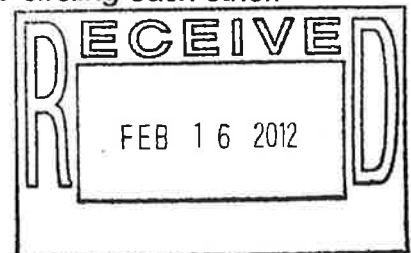
I live across from the beach at 20th Ave. I can see the dogs (at times 15 or more) of all sizes and breeds racing along the beach, singly or in groups, leaping, barking, toileting, and sometimes fighting. However well behaved a dog may be at home, groups of dogs assume a pack mentality and are out of hand and voice control. Contrary to the claims of dog owners, there are frequent problems.

Here are three of my more recent experiences; I have had many more.

My grandchildren (ages 3 and 11) and I were sitting on the sand. A dog surprised us from behind, jumping into our midst. As we struggled to pick up the 3 year old and stand up the dog continued to jump at us. The children were frightened and began to scream. We left the beach very traumatized.

My granddaughter and I were walking on the shoreline when suddenly surprised by a strong wave. When we tried to dash up to dry sand, a dog stood in our path, barking and growling at us, making it difficult to escape the water.

My sister-in-law was surrounded by a group of dogs, sniffing and circling each other. They were so close that one cut her foot with its toenail.



In each of these unhappy and potentially very dangerous situations, the dogs were not curbed by their owners. When the leash law is enforced, the beach can be pleasant and available to everyone.

Currently a vocal group of dog owners is pressuring for off leash hours. If off leash hours are permitted, then members of the general public will be denied access to the beach during those hours, unless they want to risk their safety and the safety of their children. Shorebirds will also be denied a safe beach. They need spontaneous access in order to feed when food sources are present.

I would like to address several suggestions voiced by dog owners at your constituents' meeting, Feb. 1, 2012, at Michael's on Main:

--"Trial period for off leash dogs". No! They have already had 12 years of a "trial period" and it hasn't worked.

--"Carmel Beach, an off leash model for Live Oak". Carmel Beach and the town of Carmel definitely work for dog owners. However, the situation is very different from ours. The beach in Carmel is not a safe beach for swimming, wading, and shoreline play. People don't bring children to play on the beach the way they do at our Santa Cruz beaches. The demographics are quite different. Carmel Beach serves people who live within walking distance, most of whom don't have young children, and adult visitors who come to stroll in the village, window shop, dine at a restaurant and perhaps go to the beach. It is not really a child centered town. Therefore, maintaining a beach safe from unleashed dogs is not a priority.

We might take our cue from Capitola. The city council was lobbied hard for off leash privileges. The council decided not to allow dogs on its beach finding their presence incompatible with family use of the beach and with the bird life in Soquel Creek.

--"We're only asking for a few hours". The usual suggestion from dog owners is sunrise to 10 a.m. and 4 p.m. to sunset. Not only is that half the day devoted to unleashed dogs, but those are some of the best hours at the beach, especially 4-6 p.m. when the sun's rays are not so hot and the wind, always a factor at Live Oak beaches, drops off. School is out, people are off work and free to relax at the beach, and working mothers can give their children a little beach fun at that time.

We must remember that enforcement of designated hours is costly and difficult. There have been two times in the past twelve years that I remember when the county had funds to enforce the leash law. Dog owners were defiant. They leashed their dogs and then released them as soon as the officer was out of sight. Will the county have officers available to enforce the special hours two times a day?

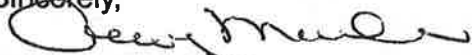
--"The beach needs maintenance and dog owners do it." It is worthy that some dog owners pick up after their dogs. Unfortunately there are many who do not. The beaches in Live Oak do need maintenance. I talked many times in the past with Jan Beutz about the lack of fire rings, trash cans, toilets, leash law enforcement, and life guards on our beaches. There never were funds for such services. People are concerned about the possible closing of our State Park beaches. We should be worried. Without maintenance the nice beaches people have come to enjoy at Seabright, Twin Lakes, and Black's Beach will be dirty like the ones in Live Oak, and without rangers to patrol, the dogs will run rampant.

The county has already generously provided dog owners with numerous off leash areas in public parks. It seems we need even more in Live Oak. Perhaps Chanticleer will be the answer. What about the empty lot on the corner of 38th and Brommer? Could the strip of land to the rear of the parking lot at Moran Lake and to the left of the restroom building be developed as a place for dogs to run? Would off leash proponents be willing to donate funds or raise monies for an additional dog park? New business parks sometimes include dog parks in their site plans. Could this concept be considered as part of the Soquel Corridor Sustainable Communities Project?

I hope the Board of Supervisors won't be coerced into providing special privileges on our public beaches for a special interest group. The small group of neighbors selfishly instigating, by means of Facebook, a clamor for dog privileges, really just wants county sanction for its daily off leash exercise routine which the group has been engaging in unlawfully for many years. The group is not concerned that a major change in the county leash law will be permanent and will unleash a hoard of dogs for the rest of us to deal with.

Thank you for considering my ideas and opinion.

Sincerely,



Georgina Monahan

Geojoymon@aol.com

cc: Mark Stone
Ellen Pirie
Neal Coonerty
Greg Caput
Santa Cruz County Parks Commission



County of Santa Cruz

BOARD OF SUPERVISORS

701 OCEAN STREET, SUITE 500, SANTA CRUZ, CA 95060-4069
(831) 454-2200 • FAX: (831) 454-3262 TDD: (831) 454-2123

JOHN LEOPOLD
FIRST DISTRICT

ELLEN PIRIE
SECOND DISTRICT

NEAL COONERTY
THIRD DISTRICT

GREG CAPUT
FOURTH DISTRICT

MARK W. STONE
FIFTH DISTRICT

February 14, 2012

Parks and Recreation Commission
979 17th Avenue
Santa Cruz, CA 95062

Dear Members of the Commission:

Thank you for submitting your report highlighting the activities of the Parks and Recreation Commission in 2010 and 2011. While Board members review the Commission's minutes as they are received, we really do appreciate the opportunity to see this overview of the various issues considered by the Commission over the past two years. Your next report summarizing the Commission's work during calendar years 2012 and 2013 will not be due until January 31, 2014.

Again, thank you for your report and for supporting the work of County government.

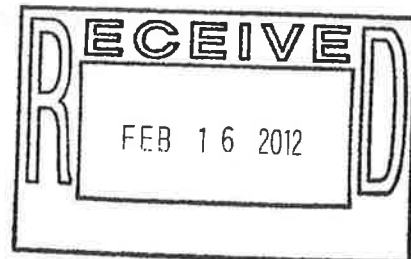
Sincerely,

JOHN LEOPOLD, Chair
Board of Supervisors

JL:pmp

cc: Clerk of the Board

1258C6



Melissa Henderson

From: michaelascott [michaelascott23@gmail.com]
Sent: Friday, February 17, 2012 1:34 PM
To: PRCWeb
Cc: katrinabagnasco@hotmail.com; gingerpea@yahoo.com; dannykocher@yahoo.com
Subject: Off-Leash Dog Open Spaces

Hello;

I am a resident of Santa Cruz County and I live in Capitola. I am a dog owner and have enjoyed taking my dog to the beach near 20th –26th Avenues. I understand that there is a recent surge on the County's part to ticket dog owners for having their dogs off leash. I have a young spirited dog who needs to run off leash. A walk or stroll around the neighborhood is not sufficient exercise for my breed of dog. In order for her to be healthy, she needs to run and play. I am aging and have a bad back, so I cannot run her. There are no lawful off-leash open spaces in Live Oak/Capitola area. I have never seen a dog problem while I've been at the beach. While the Westside dog owners can go to Its Beach (minimum hrs. times daily), we have no off-leash beaches on our side of town. I used to take my dog to Pacheco dog park or Polo Grounds, but it's too expensive for me to drive daily to those parks.

I encourage you to enact off-leash dog hrs. in the Live Oak/Pleasure Point beaches. Forty percent of household own dogs—and dogs need to play and run and socialize in order to be healthy.

Please advise when and where your meetings take place. I went on your website and could not find the dates for upcoming meetings....it just said "Mondays." Please also respond to my email address at: michaelascott23@gmail.com.

Thank you for your consideration.

Michaela Scott
(831)535-8941

March 5, 2011

Santa Cruz County Parks and Recreation Commission
Parks Department Offices
979 17th Avenue
Santa Cruz, CA 95062

Re: Preserving Passive Use of Open Space at Anna Jean Cummings Park

Dear Commission Members:

We live on Greenbrae Lane, a private road on the western border of Anna Jean Cummings Park. Many of us walk in the park every day of the year and observe firsthand how many people use and enjoy the open space there. It is an island of peace and natural beauty in our ever-busier community.

The original intent of providing open space in the park was to provide passive recreation in this quiet and scenic area. It is used and highly valued for this purpose by a large and ever-increasing number of walkers, runners, and dog-walkers. Thus the park has been extremely successful in achieving its goals for passive recreation.

We feel that the proposed disc golf course is incompatible with the intended and actual use of the park's open space. The relaxed and peaceful experience of walking the lower trails would be fundamentally altered by the worrying presence of potentially dangerous flying discs. We suspect that many users would simply avoid walking the lower trails when the course was in use. Since a number of users are not capable of climbing the steep hills in the remainder of the park, the accessibility and appeal of the park would be greatly diminished for them. The flat areas of the park are simply not large enough to accommodate both uses. We also worry about the potential impact on soil and vegetation in the playing area. Finally, we wonder if the county should be concerned about its potential liability if walkers or joggers passing by were injured.

We strongly urge you to preserve the open space in Anna Jean Cummings for its intended and very successful use as a passive recreation area.

Thank you for considering our concerns.

Sincerely,

Nikki Simpson 4002 Greenbrae Ln 95073
Lizbeth Wathen 3252 Greenbrae Ln
Florence Johnson 3252 Greenbrae Ln 95073
Steve Doe " " "
Steve Doe STEVE DOE 3255 Greenbrae Ln
Patricia Anderson 3290 Samuel II, SC 95062
Betsy Javitz 3237 Greenbrae Ln

March 5, 2011
Santa Cruz County Parks and Recreation Commission
Page 2 of 2

Rebbyn A. Walters - Rebbyn A Walters 4000 Greenbrae Ln. Soquel 95073
JERRY WALTERS Jerry Walters 4000 GREENBRAE LN, Soquel, CA 95073
~~JOAN SUZETTE BIRNBAUM~~ ~~Sambam~~ 3300 GREENBRAE LN. SOQ. 95073
JOSH BIRNBAUM JB 3300 GREENBRAE LN. SOQ. CA 95073

cc: Supervisor John Leopold, First District

