

2010 Yearbook

Quail Hollow Ranch County Park

Table of Contents



Introduction
Page 3



Attendance Statistics
Page 4



Interpretive Programs
Page 5



Visitor Center
Page 9



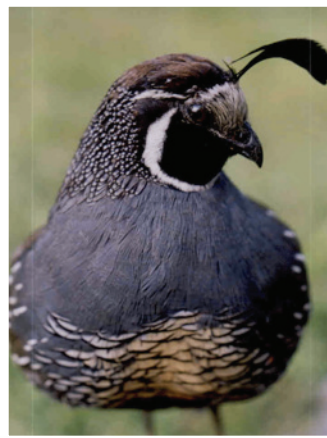
Volunteers
Page 12



Natural Resources
Page 17



Cultural Resources
Page 19



Conclusion
Page 20



Acknowledgements

Photos by:
Chuck Baughman
Lee Summers
Alex Rinkert
Al Keuter
Penny Burton
Lindsay Sanders
Ruth Pierce
Simon Stapleton
Bill Lane & Family
Roberta Keuter
Becky Thune
Stehman Family
Unknown

Introduction



Quail Hollow photo by Al Keuter

Looking back over the past ten years, Quail Hollow Ranch has gone through a slow but significant transformation. Prior to 2000, interpretive programs were offered on a seasonal basis only. Park records show attendance averaging little more than 2,500 visitors per year. The volunteer program had wained due to staffing turnover, and interpretive displays were limited.



Volunteers of the Year, 2009

Within this past decade, park hours expanded to a daily operation while park attendance swelled to a total of over 95,000 documented visitors coming to the park either on their own or to attend programs. Interpretive programs have grown to an annual, weekly offering to the public mixed with day camps, birthday parties, field trips, and after school classes. Over this past decade, more than 31,000 people have attended

formal interpretive programs. Volunteers have donated over 17,000 hours of service working on resource projects and/or programs. Visitor center displays now cover the walls with resource binders now available, all outlining details of the natural and cultural resources of the park.

The following pages outline some details of the ongoing advances that have taken place at Quail Hollow Ranch over the past ten years.



Aerial photo of Quail Hollow



Day Camp, 2004

Attendance Statistics

Attendance Statistics	2001	2002	2003	2004	2005	2006	2007	2008	2009	2010	Total
Self-led Attendance	2355	2511	2705	2633	2492	2406	2814	2289	1924	1598	23727
Weddings & Meetings	2746	2490	2529	2468	1943	2228	2370	1543	1792	1789	21898
Informal Interpretive Contacts											
With staff	1722	1413	1548	1658	1732	2005	2038	1984	1604	1311	17015
With volunteers	80	278	151	258	35	151	241	112	152	190	1648
Total	1802	1691	1699	2015	1767	2156	2279	2096	1756	1501	18762
Program Attendance											
Public Programs with staff	457	697	661	1228	544	515	467	518	698	799	6584
Public Programs with volunteers	493	1113	1233	1621	1064	1028	1272	711	1395	1043	10973
Public Programs Total	950	1810	1894	2849	1608	1543	1739	1229	2093	1842	17557
Field Trips with staff	400	282	410	514	1064	678	156	293	280	80	4157
Field Trips with volunteers	0	17	131	436	1279	16	105	74	244	0	2302
Field Trips Total	400	299	541	950	2343	694	261	367	524	80	6459
Outreach Event with Staff						451	559	173	209	15	1407
Outreach Event with Volunteers						92	390	850	178	261	1771
Outreach Event Total						543	949	1023	387	276	3178
Birthday Parties with Staff						526	456	586	251	327	2146
Birthday Parties with Volunteers						147	626	106	284	315	1478
Birthday Parties Total						673	1082	692	535	642	3624
After School Classes with Staff							26	201	220	0	447
After School Classes with Volunteers							0	0	0	0	0
After School Classes Total							26	201	220	0	447
Total Program Attendance	1350	2109	2435	3799	3951	3453	4057	3512	3832	2840	31338
Total Park Attendance	8253	8801	9368	10906	10153	10243	11520	9440	9011	7728	95423

- ❖ **Self-led Attendance** - The number of park visitors not participating in a program or seeking out information.
- ❖ **Events & Meetings** - The number of visitors attending a meeting or wedding through private rental of the facilities.
- ❖ **Informal Interpretive Contacts** - The number of visitors gaining information about the park from staff, volunteers, or displays without attending a formal interpretive program.
- ❖ **Public Programs** - The number of visitors attending formal weekend interpretive programs.
- ❖ **Field Trips** - The number of visitors attending a private interpretive program scheduled in advance through reservation.
- ❖ **Outreach Events** - The number of people visiting an information booth about the park at an event outside the park.
- ❖ **Day Camp & Birthday Parties** - The number of people attending these special events at the park.
- ❖ **After School Enrichment** - The number of participants attending these special events.

Interpretive Programs

The goal of the interpretive programs at Quail Hollow is to promote the appreciation of local natural and cultural resources and to foster a desire to protect our open space in the form of parks. At first, this was accomplished through weekend interpretive programs and field trip offerings. Then 2003 marked the beginning of summer day camps followed by the addition of birthday parties in 2006 and after school enrichment programs in 2007. Over 31,000 people have attended these programs over the past decade.

Public Interpretive Programs

Sundays and occasional Friday evenings are the days in which the public can attend events and learn about the natural and cultural resources of the park. Programs range from star gazing to worm composting and history hikes to fiber arts fairs. Yearly attendance at these formal events has grown from 1,350 in 2001 to a high in 2007 of 4,057. Recent application of fees for some programs have brought in a new source of revenue to the department.

Field Trips

Elementary schools, home schools, high schools, scout troops, pre-schools, and college classes are among the groups that have requested special interpretive programs about a specific subject. Starting out with a watershed program, the field trip curriculum has grown to include subjects ranging from bug hunts to habitat hikes and Ohlone programs to pioneer activities. Recently a fee of \$2 per child has raised additional funding for the department.

Day Camps

When funding for new day camps at Quail Hollow was cut in 2002, staff rallied and acquired a grant to provide the start up costs. As a result, in 2003 the Time Travelers Summer Day Camp was born, which allowed children ages 6-11 an opportunity to experience cultures of times past. When the success of Time Travelers warranted expansion, a new camp, Science Sleuths, was started in 2010. In its first year Science Sleuth overfilled to a whopping 30 participants, allowing kids a chance to learn about physical and life science in a fun, hands-on way. Over \$18,000 was collected for four weeks of camp this past summer.

Birthday Parties

With the advent of the Interpretive birthday parties at Quail Hollow, a new and creative methods of revenue generation began. Take your standard field trip or weekend program, add balloons and streamers along with goodie bags and, voila, you have a unique offering for parents who are tired of pizza parties, bowling, or jump houses - and the kids get to have fun while learning, too.

After School Enrichment Classes

Science programs, sewing workshops, and cooking classes are the offerings that have been available to children mid-week, after school. Knowledgeable county contractors teach their speciality allowing kids to explore and experiment with their own materials often taking home projects as well as additional extending activities.



Field Trips



After School classes



Herp Walks



Storytelling



Day Camp

Interpretive Programs Offered 2001 - 2010

Arts, Crafts, & Music Programs:

Adventures in Ink Painting
Animal Portrait Drawing Class
Bay Angels
Do it Yourself Toys
Edible Decorations
Gift Box Creations
Gingerbread Workshop for Kids
Gourd Mask Carving Class
Holiday Cards and Calligraphy Class
Holiday Wreath Making
May Day Basket Weaving
Mission Crafts
Fiber Arts Fair - 101 Creative Things to do with String
Free Beginners Knitting Class
Natural Holiday Decorations
Nature Illustration Class
Nature Photography
Nature Photography for Kids
Nature Singing – Kids for Caring
Outdoor Sketching
Paper Creations
Pastel Drawing
Sew What? A Sewing Class for Kids
Sing-Along Series
Tule Crafts
Weaving Class
What Kids Like – A Cooking Class for Busy Parents

Offered by:

Contractor
Contractor
Docent
Staff
Contractor
Docent
Docent
Docent
Contractor
Partnership
Docent
Partnership
Partnership
Docent
Docent
Contractor
Staff
Contractor
Contractor
Contractor
Contractor
Contractor
Contractor
Contractor
Contractor
Partnership
Docent
Contractor

Garden Programs:

Composting & Integrated Pest Management Workshop
Easy Seed Gardens for Busy People
Fruit Tree Care & Pruning
Gardening for Dummies: Turn Your Black Thumb Green
Gardening the Native Way - Native Plant Gardening
Garden Water Ways - Drip Irrigation for your Garden
Landscaping for Realists
Non-toxic Vertebrate Pest Control
Oh Deer! Troubleshooting Pests and Critters
Organic Gardening
Propagation for your Garden
Pruning Workshop
Sandhill Gardening
Seed Gardening for the Second Season
Stepping Stone Creations
Worm Shop: A Worm Composting Workshop

Partnership
Docent
Partnership
Docent
Partnership
Partnership
Docent
Contractor
Docent
Partnership
Partnership
Docent
Partnership
Docent
Partnership
Partnership

History Programs:

A 1950s Picnic
A Child's Victorian Tea Party
Acorn Preparation the Ohlone Way

Staff and Docents
Staff
Staff

2010 Quail Hollow Ranch Yearbook

Day of the Dead: A Halloween Celebration	Contractor
Fall Food Fest	Docents
Historic Crafts for Kids	Staff
History Hike: A Walk Through Time	Staff
If Houses Could Talk – A Ranch House Tour	Staff
Life as a Pioneer	Staff
Mule and Donkey Play Day	Partnership
Native American Uses of Plants	Partnership
Old-Time Games	Staff
Time Travelers Summer Day Camp	Staff and Docents
Tule and Other Plants of the Native Americans	Partnership
Nature Programs:	
4H at Quail Hollow Ranch	Partnership
A Batty Halloween	Contractor
Animal Adaptations	Staff
Bats: Gentle Masters of the Night	Contractor
Beginning Birding	Partnership
Beyond the Names: A Nature Emersion Experience	Staff and Docent
Biology Hike - Gary Larson Style	Staff
Birding Through the Habitats	Docent
Broom Bash	Partnership and Docent
Children's Interpretation	Staff
Claws, Camouflage, & Cunning - Animals Adaptations & Survival	Staff
Creating a Backyard Habitat Ain't Just for the Birds	Docent
Creepy Crawlies: A Bug Hunt for Kids	Staff
Everything You've Always Wanted to Know About Plants	Docent
Fantastic Fossil Fest	Docent
Finding Our Ecological Identity	Docent
Fly Fishing Workshop	Partnership
Full Moon Walk	Staff and Docents
Habitat Hike	Staff
Home, Home on the Ranch - Who Lives at Quail Hollow Ranch	Staff
Incredible Insects	Contractor
In Search of Herps - Reptiles and Amphibians at Quail Hollow	Docent
Journey to Cat Canyon	Docent
Live Wildlife	Contractor
Mid-Winter Night Hike	Staff
Nature Detectives - On the Search for Animals	Staff
Newts, Frogs, and other Amphibians	Docent
Night Walk Series	Staff and Docents
Orienteering for Kids	Staff and Docent
Owl Pellets - and Other Signs of Animals	Staff
The Other Side of Quail Hollow Ranch	Staff
Rock Hound Delight	Docent
Rock Surfing: Plate Tectonics and Other Geologic Pastimes	Docent
Running with the Wildcats	Staff
Sandhill Series: Trek to the Forbidden Sandhills	Staff and Docent
Sleuthing in the Woods – Animal Tracking	Staff and Docent
Snakes Alive	Docent
Songs N' S'mores	Staff and Partnership
Trail Maintenance Work Party	Docent
Treasures of Quail Hollow Ranch	Staff
Twilight Hike	Staff
Water's Footprints - Tracking the Signs of Water	Staff
What's Buzzin' – The Wonderful World of Bees	Docent

2010 Quail Hollow Ranch Yearbook

Science Programs:

Air-mazing Mysteries	Contractor
Adventures with Professor Starma - the Singing Astronomer	Docent
Brain Ticklers	Contractor
Chemistry Fun	Contractor
Cosmic Decoder – A Family ASTRO Series	Partnership
Crash & Burn Chemistry	Contractor
Dark Sky Star Gazing	Partnership
Fun with Muck - A Polymer Chemistry Class	Contractor
Fun with Physical Science	Contractor
Holiday Baking for Kids	Contractor
It's a Small World -- Microscope Viewing	Staff
Kitchen Table Chemistry	Contractor
Lunar Eclipse Viewing	Partnership
Mad Scientist Experiments	Staff & Docents
Magnet Mania	Contractor
Magnetism & Electricity	Contractor
Moon Mission – A Family ASTRO Series	Partnership
Night Sky Adventure – A Family ASTRO Series	Partnership
Night Sky Delight: A New Kind of Star Party	Partnership
Ooh, Ah Chemistry	Contractor
Out to Launch - The Physics of Flight	Contractor
Race to the Planets: A Family ASTRO Series	Partnership
Science Sleuths Summer Day Camp	Staff & Docents
Slimy Chemistry	Contractor
Spring Science - An Encore Science Enrichment Class	Contractor
Star & Moon Gazing	Partnership
Star Gazing at Quail Hollow Ranch	Partnership
Volcanoes and Chemistry	Contractor
Volcanoes, Fossils, & Crystals	Contractor
Winter Holiday Baking for Kids and Parents	Contractor

Storytelling Programs:

Animal Stories and Costumes	Staff
Animal Stories & Songs	Staff
California Indian Stories	Contractor
Creepy Appeal: Spiders in Fact and Fable	Contractor
Fun on the Farm Stories	Contractor
Hair-Raising Haunted Halloween Stories	Contractor
Spiders and their Friends - A Spider Zoo & Spider Tales	Contractor
Star Stories	Docent
Stories with Symbols	Staff
Stories of the Night	Contractor
Coyote Stories	Contractor
Native American Stories	Contractor
Nature Stories	Staff
Solstice Stories	Contractor
Spooky Stories	Contractor

Total = 145 programs

The Visitor Center

Gardens at entrance

Ten years ago maintenance staff had installed a new roof on the ranch house at Quail Hollow and a fresh coat of paint inside. The building housed a handful of posters and historic photographs and the place was just waiting to become a center for park programs and activities.

Since that time, a total of ten displays have been installed, resource information compiled, a classroom developed, gardens planted, new furniture added, historic artifacts donated, and a library established.

Displays

There are three types of displays covering the rich natural and cultural history of Quail Hollow. Permanent displays are scattered throughout the house, changing displays occur in the bookshelves around the fire place, and outreach displays are used at special events outside the park. See page 10 for specific display titles and topics.

Resource Information

Over the past ten years, a number of brochures, lists, and resource binders have been researched and developed. They include a new park brochure, Upcoming Activity list, a Self-guided Nature Trail brochure, Field Trip brochure, Bird List, Plant List, Butterflies & Skippers binder, Non-native Invasive Plant binder, Bird binder, Trailside Trees binder, House Scavenger Hunt, and Wildlife Log.

The Classroom

Thanks to a \$10,000 donation from the Lane Family and a \$7,000 grant from the Community Foundation of Santa Cruz, the classroom has been supplied

with all the materials to offer programs ranging from day camps, to weekend interpretive programs, to birthday parties.

Gardens

Thanks to a partnership with Master Gardeners beginning in 2007 and work by maintenance crews, foot traffic patterns now runs past the visitor center door causing more visitors to come inside. Beautification of the grounds have also led to many compliments.

New Furniture

Thanks to another Lane donation, a new sofa and chair was added to the living room. Their 1950s look, along with the 1950s TV cabinet added to the historic feel of the room. Likewise a retro 1950s refrigerator was added to the kitchen significantly improving its historic integrity.

Historic Artifacts

Over time, many visitors as well as volunteers have donated 1950s artifacts to the park. As a result, this historic time period is well represented by everything from kitchen equipment to stereo equipment to old *Sunset Magazines*. In addition, a 1890s surrey was donated by the Lane family. Net value of historic artifacts are estimated at over \$15,000.

Library

Also thanks to donations by volunteers and visitors, the park library has books ranging from plant and animal keys to historic references to children's literature. In addition, a growing collection of *Sunset Magazines* and *Books* ranging from a 1938 issue to those published in the 1990s.



Visitor Center Displays

Permanent Displays:

- **Quail Hollow Ranch Through the Ages – Then and Now** – A photographic essay on the history of the ranch.
- **Dinosaurs Turned into Birds: The Evolution of Bird Families** – A sampling of the different bird families that can be found at Quail Hollow.
- **The Changing Face of the Land: Succession at Quail Hollow Ranch** – A display featuring historic aerial photography of the area.
- **The Making of the 1950s – How History is Built on the Shoulders of the Past** – An overview of the historic events that led up to and took place in the 1950s.
- **Sunset at Quail Hollow Ranch** – A look at *Sunset Magazine* and the Lane Family's influence at Quail Hollow.
- **Big Cats – Just Large Kitty Cats ... Or Are They?** – A comparison between mountain lions and bobcats.

Seasonal Displays:

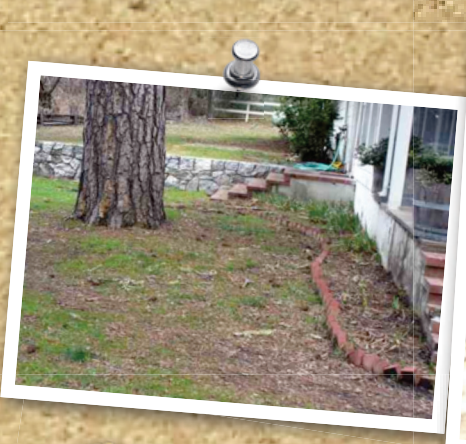
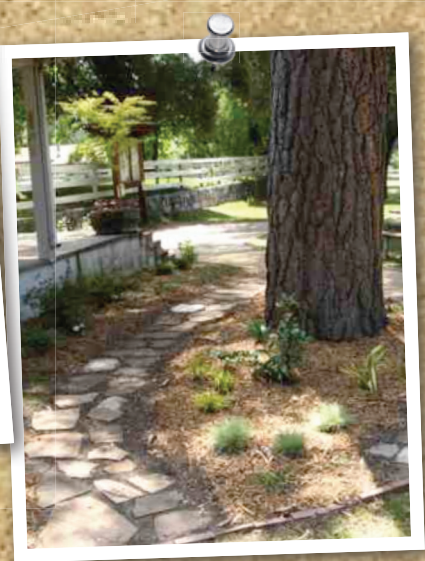
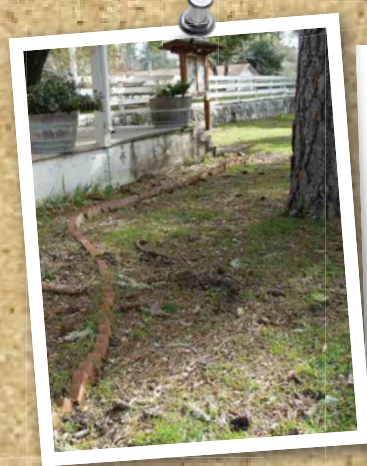
- **The Magnificent Oak: Home and Market in One Tree** – A display about the oak as a natural community and its impact throughout history.
- **The Riparian Ecotone: The Boundary Where Land and Water Meet** – A dramatic look at the pond habitat and the animals who visit it.
- **The Stars of Spring: A Cast of Characters for the Wildflower Seasonal Drama** – A sampling of the different wildflowers that may be found along the trails in spring.
- **Surviving Winter: How Animals Adapt to Seasonal Changes** – A look at how different animals are adapted to survive winter.

Information Booths:

- **To Migrate or Not to Migrate, That Is the Question** – A look at several birds, questioning if they migrate or not. Used for the *Migration Festival* at Natural Bridges State Beach.
- **For Want of a Nest: Birds as Master Builders** – A sample of the different nest types that birds can make. Used for the *Spring Fling* at Sunset State Beach and *Mother's Day for All Species* at Elkhorn Slough
- **Then and Now: How the Ohlone Culture has Changed Over Time** – A display about the materials that the Ohlone people used prior to European contact as compared to modern materials used for the same purpose. Used for the *Mission Fiesta* at the Santa Cruz Mission State Historic Park.
- **Acorn Preparation** – An interactive, hands-on booth that allows visitors to learn first hand about how the Ohlone people processed acorn. Used at Henry Cowell Redwoods State Park's *Ohlone Day*.



The work of the Monterey Bay Master Gardeners have made dramatic improvements to the look of the visitor center. "Before" photographs are on the left with views "after" on the right.



Volunteer Program

Lunch break during docent training



Trail work



Cooking demonstrations



A broom bash



Plant photography and ID

If you are wondering how so much can be accomplished in such a short time, part of the answer can be spoken in just one word: volunteers. The term “volunteer” is a broad one, consisting of docents, interns, partnerships, as well as behind-the-scenes volunteers. Over the past ten years these dedicated people collectively have donated over 17,000 hours of time to Quail Hollow. That averages out to more than a 3/4 position every year for the past decade. (See page 14 for specifics.)

Docents

They have been called “walking, talking goldmines of information.”

Docents are those unique individuals who have a background and interest in a particular resource area and share their interest with park visitors. They lead weekend interpretive programs and birthday parties promoting not only the subject of their interest, but also Quail Hollow and its resources.

Interns

There are several high schools, colleges, and universities both locally and out-of-county that have internship programs that fit nicely into the operations of Quail Hollow. Specifically, San Lorenzo Valley High School’s Watershed Program, UC Santa Cruz, West Valley College and

UC Chico have all had students who received class credit for volunteer work done at and/or about Quail Hollow.

Partnerships

There are numerous community organizations who have missions that mesh with the goals of Quail Hollow. Some of them recruit their members to educate the public about a natural or

cultural resource through our interpretive programs. Some enlist their members to assist with resource projects. Through their interest, they have greatly contributed to the programs and projects at the ranch. (For

Over the past ten years these dedicated people collectively have donated over 17,000 hours of time to Quail Hollow. This means that at the lowest, PRCW 1 pay scale, they have donated more than \$158,000 in labor to the Parks Department.

more specifics about the groups who volunteer, see page 13.)

Volunteers

At Quail Hollow, volunteers are those individuals who assist with the behind-the-scenes activities. They may work on resource surveys, display materials, historic research, graphic arts, trail maintenance, garden development, office management, visitor center coverage, website design and more.

The Parks Department owes a debt of gratitude for all the highly skilled, creative, and dedicated work that these individuals donate.

Quail Hollow Partnerships

Interpretive partnerships include alliances with the following groups:

- 4H
- Bay Area Donkey and Mule Society
- California State Parks
- Camp Joy
- Ecology Action
- Girl Scouts
- Organic Recyclers
- Monterey Bay Master Gardeners
- Sandhills Alliance for Natural Diversity
- Santa Cruz Astronomy Club
- Santa Cruz Bird Club
- Santa Cruz Fiber Arts Guild
- Santa Cruz Fly Fishing Club

In addition, the following groups have been involved with resource projects at Quail Hollow Ranch:

- Boy Scouts
- California Native Plant Society's Habitat Restoration
- Community Restoration Program
- Sandhills Alliance for Natural Diversity
- San Lorenzo Valley High School's Watershed Academy
- Santa Cruz Bird Club
- Santa Cruz County Resource Conservation District
- Wildland Restoration Team
- Various school and community groups required to perform community service



Volunteers staffing an outreach table

Volunteer Hours

Name	Total Hours	2001	2002	2003	2004	2005	2006	2007	2008	2009	2010
Alanna Williams	65.5									54.5	11
Aaron Gibbons	11.5			11.5							
Al Keuter	1757.3			278	260	276	247.9	222.6	62.7	90.8	319.3
Alec Adamson	72										72
Alex Rinkert	749.8							109	72	182.5	386.3
Alysa Benton	36.5									11	25.5
Anastacia Kampe	7			7							
Andrew Haskins	96.5	14	14	15	18	15	10	3		7.5	
Ann Goewert	31.5									31.5	
Anne Hayes	249			114.5	27	20.5	44	25	6		12
Anne Williams	273.5								4	214.5	55
Ardith Willner	8	8									
Barb Jolly	72.5						52.5	2	6	6	6
Barbara Yates	40									40	
Beau Braughton	253.2					41.2	45	29	64.5	73.5	
Becky Thune	560		540		20						
Benjamin Neel	5.5							5.5			
Bill Horn	34					21	11	2			
Bob Brumbaugh	49.5		3	5	6.5	7	23	5			
Bonnie Pond	4										4
Boy Scouts	357.35					111				101.6	144.8
Brad North	88.5				73	15.5					
Brandy Shaw	106.5					12.5	30	23.5	8.5	18.5	13.5
Broom Bash	684									153	531
Carolyn Miller	265					65	45.5	59	41	50.5	4
Carolyn Newt	166.5	38.5	18	29.5	10.5	28.5	19	11	11.5		
Carri Wagner	19.75								2	15.75	2
Cate Bryson	42.5	37	5.5								
Cathy Walls	13								7	3	3
Char Biddle	3								3		
Cheryl Devlin	6						6				
Chris Cotroneio	10						10				
Christina Floyd	74									30	44
Chuck Braughman	470.75							66	201.8	83	120
Chris Angelos	20.5										20.5
Christoph Van Wandeler	398							94.5	81.5	83.5	138.5
Colleen Fischer	99				95.5	3.5					
Connor Chesus	42.5									23	19.5
Dave	24					24					
Dianna Dunn	60			60							
Dillon Holst	10			10							
Debbie Horton	202.25					4	67	41	17.25	37	36
Duncan Lindberg	78									78	
Eamon Roberts	24							24			
Ecology Action	15.5	2	3.5	8	2						
Eric Feuss	43					6	6	6	6	6	13
Eric Schlossberg	6.5			6.5							
Evan Browne	15			15							
Felicia King	11.5							11.5			

Volunteer Hours - Continued

Name	Total Hours	2001	2002	2003	2004	2005	2006	2007	2008	2009	2010
Fiber Arts Guild	216				7	42	45	36	20	24	42
Fly Fisherman Assoc	312						50	42	70	60	90
Gael Norrington	4	4									
Gerry Baily	18			6	12						
Habitat Restoration	1283					137.5	68	105	261	207.5	504
Hitomi Hirose	80.5				80.5						
Ian Rathmann	196									69	127
Ida Corey	14										14
Jackie Maurer	8.5					8.5					
Jane Lear	26									10	16
Jean Prosser	40					40					
Jean Vandevort	523	178	345								
Jennifer Anderson	148.25									28	120.3
Jim Williams	65								19	21	25
Jim Olivas	44					44					
Jo Cotton-Thomas	63.5	9	14.5	27	9.5		3.5				
Joan Barton	262									18.75	243.3
Jodi McGraw	122	4	6	11	8		10	78	5		
Joe Parrot	30	30									
John Anderson	29										29
John Pierce	6										6
Jonathan Neel	9.5							9.5			
Joseph Garbarino	124.5					124.5					
Juanita Nama	14									7.5	6.5
Judith Hillman	2								2		
Juliana Grinvalsky	6									6	
Jordan Swank	4.5									4.5	
Karen Cozza	107.5							15	52	20.5	20
Karen Guggenheim	3				3						
Kate Stafford	7				3.5	3.5					
Kathleen Detman	41.5									10	31.5
Kathleen Whettam	11.5	11.5									
Kathy Chesus	17										17
Kelly Dearie	8								8		
Ken Kellman	9.5	5	2.5	2							
Ken Moore	337.5					50.5		113.5	172		1.5
Kent Johnson	47									22	25
Kieran Roberts	25							25			
Kristi Wolf	62								62		
Lani LeBlanc	4.5										4.5
Laurel Hamel	363.1					92	121.5	12.5	46	75.6	15.5
Lisa Cushing	12	12									
Linda Brodman	92				10	12	9	7	22.5	13	18.5
Lindey Patania	59.5					19	17	12	4	7.5	
Lindsay Sanders	283			117	148	17	1				
Lorraine Blumberg	152				108.5	32.5	11				
Luke McFadden	74.5		14.5	27	29	4					
Manny Nama	14									7.5	6.5
Master Composters	81.5		14	7	6.5	23		16			15

Volunteer Hours - Continued

Name	Total Hours	2001	2002	2003	2004	2005	2006	2007	2008	2009	2010
Martha Walden	9									9	
Marilyn Marzell	98.5			86.5	11	1					
MC Dwyer	27						27				
Meg Lehr	24									10.5	13.5
Mike Block	55.5								22	4	29.5
Mike Fisher	20	5	5	3	3	4					
Mike Zantos	94								94		
Milton Abbott	96					90	4	2			
Molly Lautamo	10.5									10.5	
Patti Scholder	146.5			92.5	33.5	9.5	2	6	3		
Paul Haskins	330.5	14	14	15	18	30.5	55	55	31	30	68
Paul King	8.5							8.5			
Peg Kearney	37.5						37.5				
Philip Brown	13									8.5	4.5
Ray Thomas	20									20	
Rob Reif	7.5							7.5			
Robert Field	21							11	7	3	
Roberta Keuter	148.7				22	38.2	40.1	22.8	9.8	3	12.8
Ruth Pierce	33								5	2	26
Santa Cruz Bird Club	175.5	10.5	6	6	4	23	6	112.5	7.5		
Santa Cruz Astronomy C	321.5	18	5	18	11.5	59	23	68	25	68	26
Sandi Rich	12										12
Sarah Pierce	339.5							79	91.25	64.5	104.8
Sean Warton	19										19
Shelayne Hammack	4								4		
Simon Stapleton	442.1							45.5	234.5	100.6	61.5
State Parks	9				6	3					
Stephan	4										4
Stephanie Means	30			30							
Stephanie Singer	10									8.5	1.5
Sue Kirkpatrick	119					39	57.5	6	2	2.5	12
Sue Procter	59.25								34.75	13	11.5
Susan King	9.5							9.5			
Susan Meyers	94									44.5	49.5
Teresa	19										19
Tim Jolly	169						56	23.5	41.5	30	18
Tina Heitzman	20								8	12	
Tracy Maxwell	29	7							8	14	
Tracy Parrow	26							26			
Wendy Stollins	47.5	6	13.5	6	2	20					
Wes Benton	387.5							82.5	85	83.5	136.5
Will Rice	112										112
Zac Zachau	203									72	131
Total	17059.3	413.5	1024	1014	1049	1618	1261	1776	2052	2621	4231

Natural Resources



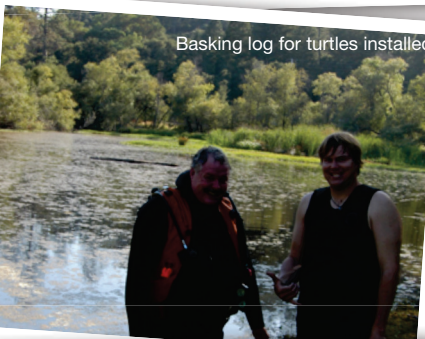
Nest box checking



Pond restoration



Sunset trail through sandhills



Basking log for turtles installed



Effects of 2008 wildfire

Within the 300-acres of Quail Hollow Ranch, a total of 15 different habitat types can be found, ranging from the sensitive Sandhill habitat to the aquatic environs of the pond. Approximately four miles of trails meander in and around these ecosystems, allowing public access to hikers and equestrians. Several projects have occurred in the past ten years that address these resources. They include surveys of the flora and fauna, habitat improvement, and trail projects.

Surveys

Thanks to the efforts of many volunteers and interns, the Park's Department now has accurate lists of the plants, birds, butterflies and skippers, and herps. Ongoing updates are made to both hard copy and on-line lists for use by the public.

Habitat Improvement

Thanks to the interest and dedication of volunteers and staff much progress has been made in improving the natural resources of the park. Ongoing wintertime work parties by Quail Hollow volunteers in cooperation with California Native Plant Society's Habitat Restoration and Wildland Restoration Team has increased areas of the park cleared of French Broom. About 75% of the broom sites have been cleared and have ongoing, annual follow-up work to maintain them. Initial broom eradication was initiated in the fall of 2001 so we are in our 9th year of this long-term project. Additionally, eradication of acacia is complete on the east side of Quail Hollow Road and eucalyptus removal by maintenance is ongoing.

Progress has been made on pond improvement thanks to volunteer and maintenance staff. Removal of the invasive Yellow Water Weed and Mosquito Fern has maintained the open qualities of the habitat, while the installation of a basking log for the sensitive Western Pond Turtle has resulted in an increase of sightings.

A nest box project through Cornell University in cooperation with the Santa Cruz Bird Club was initiated in 2003 resulting in increased habitat for cavity-nesting birds. Icing on the cake came in the form of a reintroduction of Western Bluebirds nesting for the first time in 20 years in the San Lorenzo Valley at Quail Hollow, also staying the winter at the park.

Last but not least, caging the endangered Santa Cruz Wallflowers in the sandhills by volunteers, interns, and staff have helped to keep deer from grazing this extremely rare flower.

Trail Projects

Ten years ago the trail system had no signage and filled in water bars resulted in heavy erosion. Today, all trail junctions have signs, water bars are cleaned out annually, and most of the erosion problems have been repaired thanks to volunteers, maintenance staff, and the CCCs.

In addition, two Eagle Scouts completed their projects working on the Quail Hollow trails. The two old benches on the Sunset Trail were replaced with a third one added, water bars were cleaned out, new water bars were installed, and two horse hitching posts were added.

Lastly, volunteers have been surveying a possible route for a Sunset loop extension.

Quail Hollow Resource Publications

Flora

- **Plant List** - 31 species have been added to the 455 species of plants already identified and over 70% have been photographed.
- **French Broom Management Plan** - Adopted in 2005 by the department, this document outlines techniques of broom eradication with recommendation of which techniques to use.
- **Non-native Invasive Plant Species binder** - This resource binder provides descriptions and photographs as well as maps of their occurrence in the park.
- **Trailside Trees binder** - A resource binder that provides information and photographs about trees in the park.

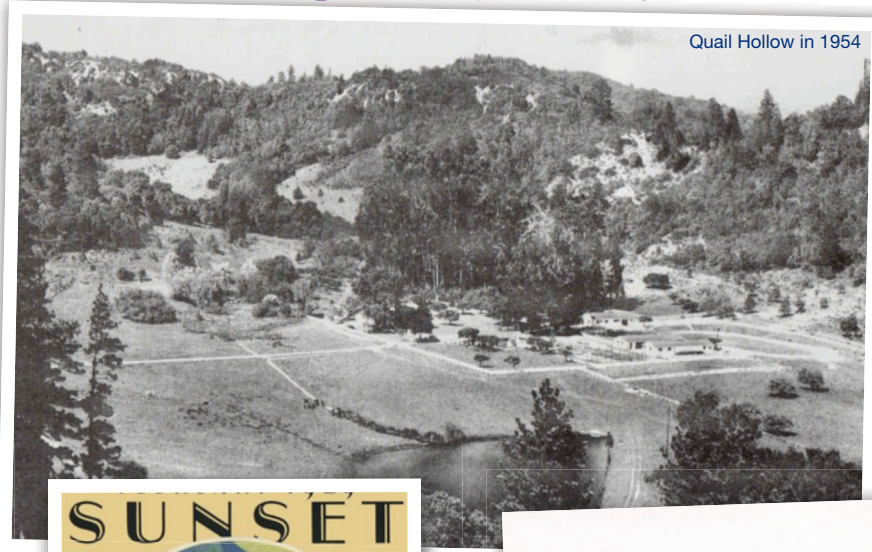
Fauna

- **Bird List** - Original lists containing 109 species has been expanded to 152 species with documentation of some species expanding their seasonal stay and/or incidence of breeding.
- **Butterflies and Skippers binder** - A list of butterflies and skippers that could occur in the park as well as a check list of those who have been identified and those photographed.
- **Herps List** - A list of the possible reptile and amphibian species that could occur in the park as well as a check list of identified and photographed species.
- **Bird binder** - A resource binder offering information and photographs of the park birds as well as brief descriptions of bird families.

Habitats

- **Scope of Work for a Land Management Plan at the Quail Hollow Ecological Reserve** - An outline of what should be included in a Sandhills Land Management Plan written for the California Department of Fish and Game.
- **Proposal to Improve the Habitat for the Western Pond Turtle at Quail Hollow Ranch** - A plan to address improvements to the pond.

Cultural History



Quail Hollow in 1954



Jean & Bill Lane 2002



1928 cover of Sunset

The cultural history of Quail Hollow spans the Ohlone culture, Californio era, early settlers, and culminated in the Lane Family ownership in the 1930s, 40s, and 50s.



Stehman photo of the 1984 Winter



The Lane Family at the ranch



The Stehman Kitchen

Over the past ten years, the cultivation of Bill Lane's interest in his family's home has been the most significant addition to the cultural history of the ranch. This not only led to acquiring copies of family photos of the ranch and the recording of Bill's entertaining childhood stories growing up at Quail Hollow but also helped lead to donations totaling \$189,000 including the establishment of an endowment for the park.

In addition, donations by volunteers and visitors of everything from old *Sunset Magazines* and books to 1950s kitchen appliances have added to the historic look of the ranch. Of note was the Stehman family donation of copies of their family growing up on the ranch in the 1970s, which added to the bank of photographic and historic documentation.

Conclusion



Park entrance road

In the past ten years, the programs, projects, resources, and facilities at Quail Hollow Ranch have blossomed and grown despite a challenging economic climate. The reason for this is due to the hours of volunteer time, the donations of resources and funding, and the dedication of so many parks staff.



Stehman Family Photo

It is hoped that the next ten years Quail Hollow will continue to inspire its visitors to learn about its resources, to increase their appreciation, and to become genuine park stewards. Now more than ever we need to promote a sense of community ownership with our parks in order to prosper and grow.



Sandhills trek

Quail Hollow is truly a park for the people of Santa Cruz County. It's location, off the beaten path, allows those with enough gumption to trek there a valuable reward as they hike the trails, enjoy the programs, or picnic in the sun. The sense of community that it instills in locals are no doubt a result of the peace and joy that these hills inspire.



Day camp